



**April 10, 2020**

## **CITY EVENTS**

### **UPCOMING PUBLIC CITY MEETINGS**

- City Council Policy Session – 1:00 p.m. Monday, April 13, please click here to watch meeting <https://www.youtube.com/user/cityofphoenixaz>.
- City Council Formal Meeting – 2:30 p.m. Wednesday, April 15, please click here to watch meeting <https://www.youtube.com/user/cityofphoenixaz>.
- City Council Policy Session – 1:00 p.m. Thursday, April 16, please click here to watch meeting <https://www.youtube.com/user/cityofphoenixaz>.

For more information on these and all other public City meetings visit:  
<https://www.phoenix.gov/cityclerk/publicmeetings/notices>.

City Council meetings are live on Cox Cable Channel 11 and streamed live on [www.phoenix.gov](http://www.phoenix.gov) and facebook.com/cityofphoenix. Past City Council meetings are posted to YouTube at <http://www.youtube.com/cityofphoenixaz>.

## **DISTRICT 1 EVENTS:**

### **DISTRICT 1 COMMUNITY MEETINGS**



The City of Phoenix is taking additional steps to protect its residents and help to combat the spread of coronavirus in the community. As a result, many gatherings and events have been canceled or postponed.

- District 1 Community Breakfast, Friday, April 24 —Canceled
- Bike Safety Rodeo, Saturday, April 25—Canceled

## CITY NEWS & EVENTS:

For the most updated news and information related to COVID-19 or Coronavirus, please frequently check [phoenix.gov/newsroom](https://www.phoenix.gov/newsroom).

## UPDATED: CORONAVIRUS BUSINESS & RESIDENT RESOURCES



**We're in this together!** Looking for help? Check out these additional resources for Phoenix businesses, the workforce, and residents relating to the Coronavirus COVID-19 health emergency. We will continue to update this page with new information when confirmed. Please call **BEFORE** visiting any listed location to verify current hours of operation.

Residents with questions about city services and programs are encouraged to call **(602) 262-3111** or e-mail [contactus@phoenix.gov](mailto:contactus@phoenix.gov).

Please visit <https://www.phoenix.gov/Resources> for the latest updates to accessing resources:

- For job seekers & laid off workers
- For businesses
- For non-profits/arts organizations
- Covid-19 testing
- Family or individual meals
- Emergency rent, utility or eviction
- **Parenting resources**
- **Student loan resources**
- Affordable housing
- Nutrition assistance
- Senior meals
- Healthcare
- Other help
- **Student meals**
- **For individual artists**
- **More resources websites**

## **CITY OF PHOENIX IMPACTED SERVICES UPDATE**

Please visit <https://www.phoenix.gov/newsroom/em-and-hs/1054> for information on City Services and facilities currently closed or impacted, and City Services available online.

Read this information in Spanish. Lea esta información en español (PDF)



[https://www.phoenix.gov/newssite/Documents/COVID19\\_Newsroom\\_Main\\_SP.pdf](https://www.phoenix.gov/newssite/Documents/COVID19_Newsroom_Main_SP.pdf)

## PHOENIX PARKS AND RECREATION: EASTER WEEKEND RESTRICTIONS

As it continues to manage the spread of the coronavirus, the Phoenix Parks and Recreation Department announced Thursday, April 2, a policy for the upcoming Easter holiday weekend. These decisions were made after a vote of the Phoenix City Council.

For the Easter holiday weekend, which is Saturday, April 11 and Sunday, April 12, the following policy will be in effect:

- Flatland parks will be open for residents to access walking paths and green space only
- No picnicking will be allowed
- Restrooms will remain open
- Parking lots for flatland parks will be closed, but those with a disabled parking placard will be allowed access

Detailed information about the city's parks and their amenities is available by visiting <https://www.phoenix.gov/parks> Being outdoors is important for health and wellness, and the Phoenix Parks and Recreation Department encourages residents to get outside, get exercise and practice responsible physical distancing. The department will continue to work with the community to manage this public health emergency, and asks that residents follow these guidelines:

- Refrain from using parks or trails if they are exhibiting symptoms
- Follow CDC guidance on personal hygiene prior to and during use of parks or trails
- Prepare for limited access to public restrooms or water fountains
- While on trails, warn other users of their presence as they pass, and step aside to let others pass
- Follow CDC guidance on the recommended size of social gatherings including outdoor picnicking, pick-up sports and other group hangouts, and maintain proper physical distance at all times
- Observe CDC minimum recommended social or physical distancing of six feet from other individuals at all times. If this is not possible, users should find an alternate location or depart that space.
- Consult their local and state ordinances and guidelines for the most up-to-date recommendations on park and trail use

For additional information about local response to the coronavirus, visit the [Maricopa County Department of Public Health](#) and the [Arizona Department of Health Services](#) websites.



The sign features a red border and a white background. At the top, a red circle with a white exclamation mark is followed by the text "Easter Restrictions" in bold red. Below this, a red banner contains the text "Effective Sat., April 11 - Sun., April 12" in white. The main body of the sign lists four items, each with an icon and a text description: 1. A walking person icon with the text "Parks will be open for residents to enjoy walking paths & green space." 2. A "CLOSED" sign icon with the text "Restrooms will be closed." 3. A "NO PICNICKING NO GRILLING" sign icon with the text "Picnicking & Grilling will be prohibited." 4. A "NO PARKING ACCESSIBILITY ONLY" sign icon with the text "Parking lots will be closed. Those with an accessibility parking placard will be allowed access." At the bottom, the City of Phoenix Parks and Recreation Department logo is on the left, and the website "phoenix.gov/parks" is on the right.

## PHOENIX PUBLIC TRANSIT AND REGION PROMOTES SOCIAL DISTANCING ON BUSES



Beginning Monday, April 13, seating on all bus routes is limited in order to support social distancing measures between passengers. These measures were approved by the Phoenix City Council on April 6 to help reduce the spread of COVID-19 and for the safety of all community members.

Passenger limits will be as follows, with exceptions for wheelchair and mobility aid users as needed:

- Maximum of five (5) passengers on smaller neighborhood circulator vehicles (ALEX, MARY, SMART routes)
- Maximum of ten (10) passengers on a regular 40-foot bus
- Maximum of fifteen (15) passengers on a 60-foot articulated (bendy type) bus

Should vehicle capacity be reached, bus operators may not allow additional boardings until additional capacity becomes available. In such cases, passengers may need to wait for the next bus.

The city of Phoenix and Valley Metro, who also operates bus services in the metro area, are coordinating a regional effort to further educate riders on social distancing while on board public transportation. The signage that will be added to buses will be consistent for passengers across this region.

Passengers are encouraged to plan additional travel time, as these measures may impact their trip.

Passengers are also reminded to use public transit only for necessary trips. We ask everyone to continue to practice social distancing while riding, including:

- boarding using the rear doors,
- visually showing fare to the driver,
- staying at least six feet apart while waiting at bus stops and
- in accordance with CDC guidance, wearing a cloth mask covering their nose and mouth.

Recognizing there is currently a lower demand, public transit is nonetheless a critical service for many essential service workers in our communities. We are working to ensure that those who depend on transit are able to continue using our system and get to their destinations safely.

We appreciate your understanding and cooperation during these times.

## Light Rail, Express, RAPID Bus Service Schedules Reduced Due to COVID-19

Express and RAPID commuter bus route schedules will continue to operate on a reduced schedule, and will operate fewer trips each weekday morning and evening. Riders should check [valleymetro.org](https://www.valleymetro.org) for trip planning. This is a proactive step to maintain local bus route service for those who fully rely on public transit for critical trips.

There has been less demand for commuter trips, and we are reallocating our skilled workforce of operators, supervisors and maintenance workers to focus on our local bus routes at this time.

Beginning Saturday, April 11, **light rail** will be on the same schedule Monday-Saturday, 15-minute frequency 4 a.m-6 p.m. with no late-night service on Friday and Saturday. Sunday service will remain the same. Local bus, circulators, and paratransit continue to operate on regular schedules.

### Phoenix Transit Centers

Customer service windows at the following Phoenix transit centers will remain closed until further notice:

- Central Station (Central Avenue and Van Buren Street)
- Ed Pastor (Central Avenue and Broadway Road)
- Sunnyslope (3rd Street and Dunlap Avenue)
- Metrocenter (Metrocenter Mall)

Various options for purchasing fares remain available to passengers, such as ticket vending machines located throughout light rail platforms, at [participating retailers](#) or [online](#).

For an appointment to reclaim lost and found items, please call (602) 534-5053 between 8 a.m. – 4 p.m. Monday – Friday.

Access to Public Transit Department offices at 302 N. First Ave. including the Business and Workforce Development Center (across from Central Station), will be by appointment only. To make an appointment with Public Transit, email [pubtrans@phoenix.gov](mailto:pubtrans@phoenix.gov), or call (602) 262-7242.

To make an appointment at the Workforce Development Center email [phoenix.business.center@phoenix.gov](mailto:phoenix.business.center@phoenix.gov), or call 602-256-3147.

For general transit-related information, please contact Valley Metro customer service at <https://www.valleymetro.org/> or call (602) 253-5000 or TTY (602) 251-2039 between 5 a.m. - 10 p.m. Monday through Friday, 6 a.m. - 8 p.m. Saturdays or 8 a.m. - 5 p.m. Sundays or you can email [csr@valleymetro.org](mailto:csr@valleymetro.org).

We will continue to update riders and community members on <https://www.valleymetro.org/> and social media. Twitter: [@valleymetro](#) [@PhoenixMetroBus](#). Thank you for your patience and stay safe.



## RECYCLING AND DISPOSAL OPTIONS FOR YOUR SPRING CLEANING

We realize that staying at home during a health crisis gives more time for families to do some deep spring cleaning and get rid of items you no longer need or haven't touched in months.

While the easy way to get rid of waste materials in your homes is to place them in your solid waste containers, it's important that the lids close securely. Our solid waste drivers are only going to collect materials that are securely placed inside the containers.



To avoid a health and safety hazard, we also require trash materials to be bagged and tied before placing them in the containers. Recyclable materials, however, should be unbagged, clean and dry.

If you have an increased amount of waste materials every week, here are some options for you to consider:

**For clothes and small appliances** – More and more people are organizing their closets during these stay-at-home protocols. If you're filling up bags with no-longer needed clothes and shoes in good condition, consider donating them to [Goodwill of Central and Northern Arizona](#). According to their website, their stores are closed due to COVID 19 protocols, but their donation centers are still open.

**For large recyclable materials** – Now's the time to get rid of that large box that contained the 75-inch TV you bought at a smokin' deal! But that won't fit in your blue recycling container, along with the other recyclables you already have. That's where our Eco Stations come in handy. Phoenix has provided eight Eco Stations, located in various parks throughout the city, that residents can use to dump their recyclables only (no trash please) for free. The Eco Stations accept paper, cardboard, aluminum, glass and hard plastics, and recycling rules apply: make sure their clean, dry and not bagged. For a list of Eco Station locations: <https://www.phoenix.gov/publicworks/ECOstations>.

**For bulky trash items** – So you've decided to chop down the tree that has been triggering your allergies. Thank goodness you checked the current bulk trash pick-up schedule so you can dispose of those tree parts properly and in a timely manner. Public Works offers quarterly bulk trash collection to residential residents. If waste materials do not fit your regular solid waste containers, this is a convenient option for many. For the latest schedule and bulk trash placement rules, visit <https://www.phoenix.gov/publicworks/bulktrash>.

**For EXTRA bulky items** – If you must get rid of that old sofa now to make room for the new one you just bought online, but scheduled bulk trash pick-up is two months away, there is another option. You will need a truck (or your friend's truck) and haul your old sofa to one of Phoenix's transfer stations <https://www.phoenix.gov/transferstations>. Residential customers receive a free disposal, up to one ton, every calendar month at a city-owned transfer station as part of their monthly fee. Residents must bring a current city services bill showing solid waste fees to receive the free service.

**For hazardous materials and e-waste** – Your kids have gone through a number of iPads and other tablets through the years and now you have a collection of non-working e-waste products you need to get rid of properly (but don't throw away that iconic Walkman). Although, Public Works has cancelled its Household Hazardous Waste events to be in line with social distancing protocols, we are offering two options to properly dispose of your e-waste and extra latex paint you have lying around. The drop-off alternatives are free to residential customers and information is available at <https://www.phoenix.gov/publicworks/hhw>.

For additional city services requests, please call the customer service line at 602-262-6251 or go online at <https://www.phoenix.gov/atyourservice>.

## POPULAR TOOLS FOR SCHOOL PROGRAM IS NOW ONLINE

The staff at Phoenix Public Library are dedicated to bringing our customers as many programs and resources as possible during our temporary closure. Tools for School is a popular program designed to help parents and young children get a head start on kindergarten by sharing books and activities that build critical skills. Now, Early Literacy Team member, Vicky Vela-Thai, has recorded sessions for parents and children to do together at home. Just visit



<https://www.phoenixpubliclibrary.org/kids>, and click on the Tools for School page. <https://www.phoenixpubliclibrary.org/kids/Pages/Kids%20Programs/Tools-for-School.aspx>.

**Who's it for?** Children three to five years old and their favorite grownups

**What will you do?** You and your child will get a head start on kindergarten! Share books and activities that build kindergarten skills in class and are easily practiced at home.

**What will you learn?** Learn kindergarten basics like letters, numbers, shapes, and colors. You and your child will also go beyond the basics to work on social and emotional skills that all children need for school.

*Support for early literacy programs is provided by a grant from First Things First, which partners with families and communities to give all Arizona children the opportunity to arrive at kindergarten healthy and ready to succeed. Learn more at [FirstThingsFirst.org](http://FirstThingsFirst.org).*

# COUNCIL DISTRICT 1 INITIATIVES



## Street Right-of-Way Landscape Maintenance

Crews maintained the landscaped areas within the street right-of-way listed below. This work typically includes weed and trash removal and landscape pruning. This helps provide a safe environment for the public and enhances the image of the city's streets. For more information about the street right-of-way landscape maintenance program, visit [phoenix.gov/streets/ROWlandscape](http://phoenix.gov/streets/ROWlandscape).

1. 19th Ave. and Deer Valley Rd.
2. 43rd Ave. and Pinnacle Peak Rd.

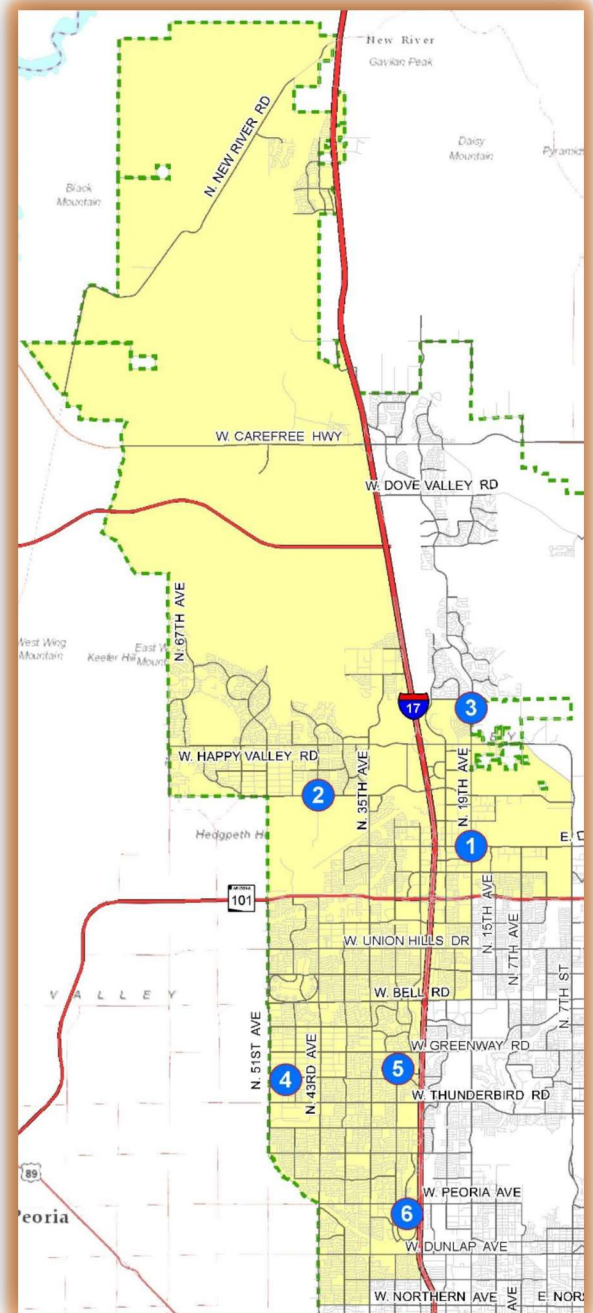
## Roadway Repair Work

Street maintenance crews completed significant roadway repairs at the following locations in D1:

3. 19th Ave. between Pinnacle Peak Rd. and Happy Valley Rd.
4. 4844 W. Evans Dr.
5. 31st Ave. and Banff Ln.
6. 10223 N. Metro Pkwy.

## Citywide Updates

Paving season began at the beginning of March with the first mill and overlay project on 15th Avenue from Thomas Road to Camelback Road. The Street Transportation Department has since completed 12 mill and overlay projects and applied 13 pavement preservation treatments citywide. The projects are part of the Accelerated Pavement Maintenance Program (APMP). This activity is recapped in individual reports with infographics that the 0 prepares and sends separately to each district.





## INTERSTATE 17 LANE AND RAMP CLOSURE AT PINNACLE PEAK AND HAPPY VALLEY ROADS CONTINUE THROUGH FRIDAY, APRIL 17



### Worked scheduled during overnight hours

Interchange reconstruction continues in north Phoenix **at Interstate 17 and Pinnacle Peak and Happy Valley roads**. The Arizona Department of Transportation advises drivers to slow down and use caution around construction personnel and equipment while the following lane and ramp closures are in place:

- North and southbound I-17 will be narrowed to one or two lanes at Happy Valley Road nightly from 9 p.m. to 5 a.m. beginning Monday, April 13, and continuing through the morning of Friday, April 17. Drivers need to slow down and merge safely into the open travel lanes.
- The southbound I-17 Happy Valley Road on-ramp will be closed from 9 p.m. Sunday, April 12, to 5 a.m. Monday, April 13. **DETOUR:** Use Happy Valley Road to southbound 43rd Avenue to eastbound Pinnacle Peak Road to access southbound I-17.
- The northbound I-17 Pinnacle Peak Road off-ramp will be closed from 9 p.m. Monday, April 13, to 5 a.m. Tuesday, April 14. The northbound frontage road will remain open. **DETOUR:** Exit at Deer Valley Road/Rose Garden Lane and use northbound 19th Avenue.
- The northbound I-17 Pinnacle Peak Road off-ramp will be closed **and** the northbound frontage road will be **closed** between Pinnacle Peak and Happy Valley roads from 9 p.m. Thursday April 16, to 5 a.m. Friday, April 17. **DETOUR:** Exit at Deer Valley Road/Rose Garden Lane and use northbound 19th Avenue.

Construction is scheduled to continue through fall 2020; however crews are scheduled to open the **new tight diamond interchange at Pinnacle Peak Road** later this spring.

With state highways essential to delivering goods and services, ADOT, its employees and its contractor partners are dedicated to delivering transportation improvement projects during the current public health situation. To learn more, please visit <https://azdot.gov/covid-19-resource-center>.

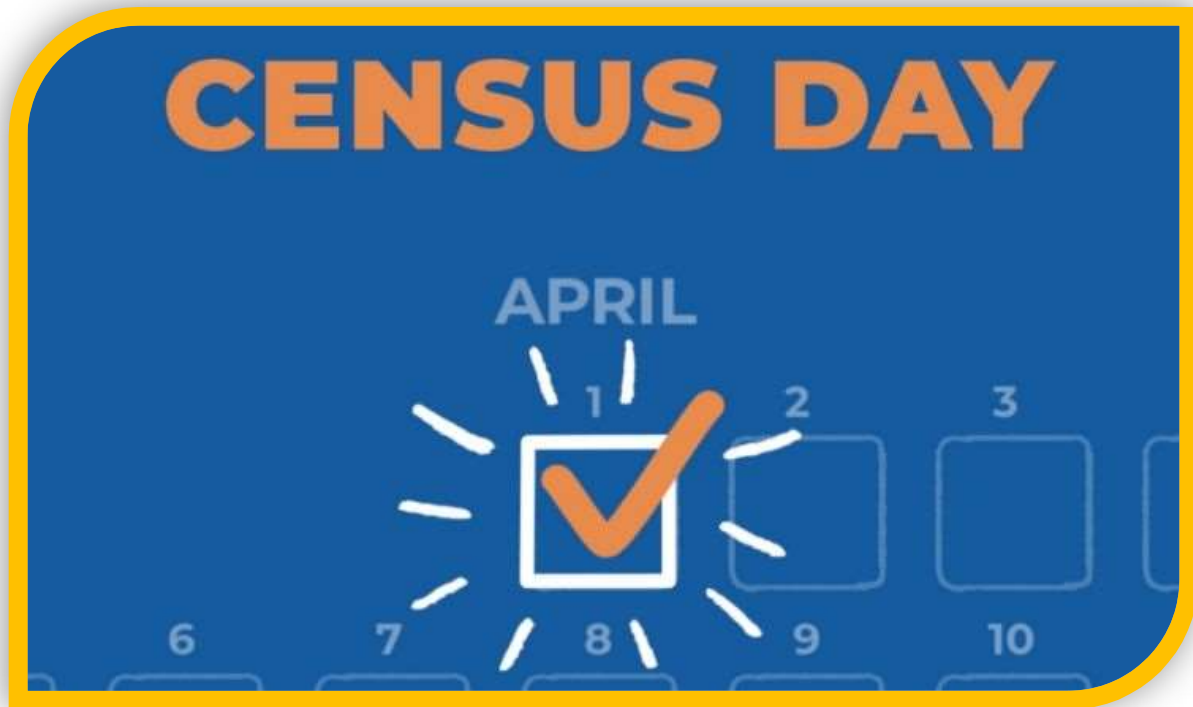
*Schedules are subject to change based on weather and other unforeseen factors. For more information, please call the ADOT Bilingual Project Information Line at 855.712.8530 or go to [https://apps.azdot.gov/contact\\_adot/](https://apps.azdot.gov/contact_adot/) and select Projects from the drop-down menu. For real-time highway conditions statewide, visit ADOT's Traveler Information Site at [www.az511.gov](http://www.az511.gov), follow ADOT on Twitter ([@ArizonaDOT](https://twitter.com/ArizonaDOT)) or call 511, except while driving.*

## FREE LAUNDRY SERVICES TO THE FAMILY OF FRONT LINE RESPONDERS

Thank you Tide Cleaners and Tide Loads of Hope for stepping up during this global pandemic and offering free laundry services to the immediate family of front-line responders who are supporting the Phoenix area. For more info, visit <https://hope.tidecleaners.com/>.



## APRIL 1 WAS CENSUS DAY! HAVE YOU BEEN COUNTED?



With all the other news happening, another important date on your calendar was April 1, Census Day in the United States, and participating is one of the easiest ways you can support the city of Phoenix, just by filling out the online Census form.

You should have already received a code in the mail that you can use to complete the Census form for your household online at <https://my2020census.gov/>. You'll be asked basic demographic questions about your household, including how many people are living in the home; if your home is owned or rented, and about the age, sex, race, and relationships of the people who are in the household.

“Participation in the Census is critical for Phoenix, because it impacts our funding across so many areas for years to come,” said Albert Santana, the city’s Census Director. “The form only takes ten minutes to complete, so it is one of the simplest ways to ensure that we have the resources we need to operate.”

In Phoenix, an accurate 2020 Census count represents \$533 per person, or approximately \$866 million a year. This funding helps to provide vital resources, programs and services such as housing, transportation, education, public safety, and so much more.

The city of Phoenix has been working in partnership with the Maricopa Association of Governments to encourage participation in the 2020 Census through a local campaign, called iCount2020. The campaign highlights the ways that an accurate count in the census supports local governments, and provides information on how to respond to the census online, by phone or by mail; what residents should look for when receiving communication from the federal government about the Census; and a variety of Frequently-Asked-Questions. More information is available at <https://icount2020.info/>.

You can also help the city of Phoenix by encouraging your friends and family to participate. Share these Census posts on [Facebook](#), and [Twitter](#)!

# NORTHWEST PHASE II LIGHT RAIL EXTENSION



**NORTHWEST PHASE II**  
TITLE

**LIGHT RAIL EXTENSION**  
TYPE

**FACT SHEET / Q2 2020**  
valleymetro.org/northwest2

## About the Project

Phase II of the Northwest Extension will extend light rail west on Dunlap Avenue from 19th Avenue, then north on 25th Avenue and across I-17 on Mountain View Road with a terminus on the west side of the freeway near Metrocenter Mall.

At the end-of-line, the Metrocenter Station will be the first elevated station in Valley Metro's light rail system. The existing Transit Center will relocate to below the elevated station. Adjacent to the transit center will be a four-story park-and-ride garage that will be accessible to the station.



Metrocenter Station Rendering

Voter approved:



### PROJECT STATUS

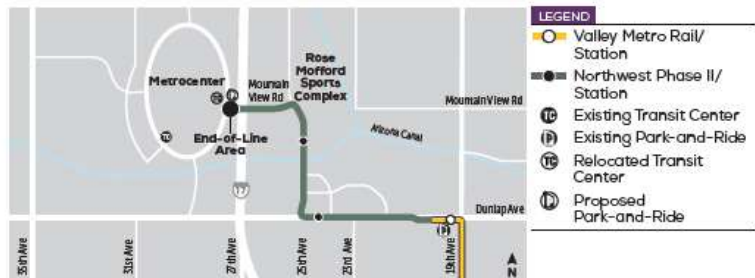
- The Federal Transit Administration authorized the project to move into the Entry into Engineering phase, an important step towards securing federal grant funding.
- Coordination and collaboration with local area community groups, business owners and residents continues throughout the project corridor.
- By April 2020, project design will be complete.
- Underground utilities location and evaluation, along with infrastructure inspections is anticipated to be complete in April 2020.

### NEXT STEPS

- Surveyors will start collecting property data in the corridor.
- A public meeting in summer 2020 will inform the public about the final project design, including public art concepts, and will include an overview of project construction activities.
- Project construction is anticipated to begin in August 2020.
- A workforce development program focused on education and career development related to the project will be launched in mid 2020.



### ROUTE MAP



/valleymetro

/valleymetroconstruction

For more information, please visit [valleymetro.org/northwest2](http://valleymetro.org/northwest2).

Join the Northwest Extension Phase II mailing list by contacting:

Michael Book  
Community Outreach Coordinator  
mbook@valleymetro.org  
602.256.5811 | TTY 602.256.5811





## TO HELP WITH SOCIAL DISTANCING, PHOENIX LIMITED ACCESS TO TRAILS



Being outdoors is important to health and wellness, and the Phoenix Parks and Recreation Department continues to educate the community about responsible social distancing of at least six feet when using a park, hiking trail or just enjoying the outdoors.

To continue this education and address increased volume on some city hiking trails on March 28, the department limited access to several of the city's high-traffic hiking destinations. Additionally, the department will increase visibility of park rangers and city staff at those locations to resolve issues with vehicle and foot traffic.

The following areas were impacted:

- **Papago Park – Hole in the Rock:** The main parking lot for Hole in the Rock will be closed and access by hikers to Hole in the Rock will be limited. Trail usage at this location has nearly tripled over the last three weeks, compared to the same period in 2019. Other parking lots within Papago Park will be open, as will other trails and access points.
- **Camelback Mountain – Echo Canyon Trailhead:** Traffic and parking controls to manage ingress and egress will be in place to resolve overcrowding. Drivers should be respectful if parking in the surrounding neighborhood and be aware of any street parking restrictions.
- **Piestewa Peak Trailhead:** Traffic and parking controls to manage ingress and egress will be in place to resolve overcrowding. Drivers should be respectful if parking in the surrounding neighborhood and be aware of any street parking restrictions.
- **South Mountain Park – Pima Canyon Trailhead:** Traffic and parking controls to manage ingress and egress will be in place to resolve overcrowding. Drivers should be respectful if parking in the surrounding neighborhood and be aware of any street parking restrictions.



- **South Mountain Park – Dobbins Lookout:** Vehicle access on Summit Rd. will be controlled to resolve overcrowding at Dobbins Lookout.
- **Camelback Mountain – Cholla Trail:** Due to rock remediation and trail maintenance following recent rain, this trail will be closed for approximately two weeks.

City staff is continually monitoring vehicle and foot traffic at trailheads citywide, and additional limits could be put in place at other locations if needed. If hikers see that a trailhead is busy, they should avoid contributing to a large group and use another trail or visit another trailhead.

Phoenix is home to more than 200 miles of trails, and while these limitations are in place the hiking community is encouraged to explore trails in other areas. Suggested alternate trail locations include the Rio Salado Habitat Restoration Area and the Reach 11 Recreation Area. Detailed trail information, trailhead locations and important "Take a Hike. Do it Right." hiking safety guidelines can be found at <https://www.phoenix.gov/parks/trails>.

Residents can also exercise outside by walking, jogging or biking along the recently renovated **Grand Canalscape** <http://www.grandcanalscape.com/>. They can also take advantage of FitPHX WalkPHX paths in more than 40 city parks.

## **DON'T GIVE TO INDIVIDUALS, GIVE TO SHELTERS**

**To end panhandling, we must stop giving directly to individuals that panhandle.**

Phoenix is full of compassionate and charitable citizens. They want to help those in need. However, giving money to people panhandling doesn't fix problems. To truly help those in need, stop giving money to panhandlers and instead support organizations and services that provide long-lasting care.

- Central Arizona Shelter Services
- Andre House
- Salvation Army
- St. Joseph the Worker
- UMOM New Day Centers
- The Phoenix Rescue Mission
- St. Mary's Food Bank



For more organizations and information on housing or other services, please visit the Homeless Shelter Directory webpage at: [Homeless Shelter Directory](https://www.homelesshelterdirectory.org/cgi-bin/id/city.cgi?city=Phoenix&state=AZ).

<https://www.homelesshelterdirectory.org/cgi-bin/id/city.cgi?city=Phoenix&state=AZ>

# PHOENIX INTERACTIVE STREET CLOSURE & RESTRICTIONS MAP – UPDATED APRIL 10.

To view a listing of current or planned street restrictions  
please visit this link:

<https://www.phoenix.gov/streets/street-closures>.

The dashboard is a multi-agency effort to keep residents informed of street closures and restrictions due to planned construction activities or utility work, as well as unexpected events such as flooding, traffic collisions, fires, utility failures or other emergencies. For street closure alerts, follow the Phoenix Street Transportation Department on Twitter at [@StreetsPHX](https://twitter.com/StreetsPHX).



## NEWS & EVENTS FROM AROUND THE DISTRICT:

### WASHINGTON ELEMENTARY SCHOOL DISTRICT NEWS



Washington Elementary School District Distributing Free Meals to Children During Closure



## GRAB AND GO FEEDING PROGRAM

**MONDAY - FRIDAY  
10:30 A.M. TO NOON**

**Drive thru or walk-up only. Child(ren) must be present to receive meals.**

Washington Elementary School District will provide free breakfast and lunch Monday - Friday in one quick stop. From 10:30 a.m. to noon at the sites listed below, children can pick up a sack lunch for that afternoon and a sack breakfast for the following day. All children up to 18 years of age are invited to participate.

Acacia Elementary	3021 W. Evans Drive, Phoenix, AZ 85053
Cholla Middle School	3120 W. Cholla Street, Phoenix, AZ 85029
Desert View Elementary	8621 N. 3rd Street, Phoenix, AZ 85020
Maryland School	6503 N. 21st Avenue, Phoenix, AZ 85015
Mountain View School	801 W. Peoria, Phoenix, AZ 85029
Ocotillo Elementary	3225 W. Ocotillo, Phoenix, AZ 85017
Orangewood School	7337 N. 19th Avenue, Phoenix, AZ 85021
Richard E. Miller Elementary	2021 W. Alice, Phoenix, AZ 85021
Roadrunner Elementary	7702 N. 39th Avenue, Phoenix, AZ 85051
Shaw Butte Elementary	12202 N. 21st Avenue, Phoenix, AZ 85029
Sunnyslope School	245 E. Mountain View Road, Phoenix, AZ 85020
Sunset Elementary	4626 W. Mountain View Road, Glendale, AZ 85302
Washington Elementary	8033 N. 27th Avenue, Phoenix, AZ 85051



## DEER VALLEY UNIFIED SCHOOL DISTRICT NEWS

# MEAL DISTRIBUTION CHANGE!

Starting Monday, April 6, 2020

**Meal Pick-up Now MONDAY and THURSDAY only!**

**MONDAY – Pick up breakfast and lunch for 3 days**

**THURSDAY – Pick up breakfast and lunch for 2 days**

Due to the school shutdown for Coronavirus (COVID-19), Deer Valley Unified School District will provide meals to ALL children 18 and under at various locations in our district even though schools are closed. Please stay in your car and meals will be passed through to the driver. Child(ren) do not need to be present when picking up the meals. If a parent wishes to pick up food without their child present, then the parent(s) will need to provide a photo ID and each child's date of birth. **The district may change and/or add locations or hours depending on demand.**

Please check [www.dvUSD.org/food](http://www.dvUSD.org/food) regularly for updated info.

Location	Address	Time
Bus Stops	Angela Dr. and 19th Ave.	11 am – 12:00 pm
	11th Ave. and Danbury Dr.	11 am – 11:30 am
	27th Ave. and Adobe Dr.	11 am – 12:00 pm
	57th Ave. and Grovers at Chapparral Park	11 am – 11:30 am
Arrowhead Elementary	7490 W. Union Hills Glendale	10:30 am – 1:30 pm
Barry Goldwater HS	2820 W. Rose Garden Lane Phoenix	10:30 am – 1:30 pm
Boulder Creek HS	40404 N. Gavilan Peak Anthem	10:30 am – 1:30 pm
Constitution Elementary	18440 N. 15th Ave. Phoenix	10:30 am – 1:30 pm
Mirage Elementary bus lane	3910 W. Grovers, Glendale	12:00 pm - 1:00 pm
Park Meadows Elementary	20012 N. 35th Ave Glendale	10:30 am – 1:30 pm
Sunrise Elementary	17624 N. 31st Ave. Phoenix	10:30 am – 1:30 pm
Village Meadows Elementary	2020 W. Morningside Drive, Phoenix	11:00 am – 1:00 pm
Beuf Community Center	3435 W. Pinnacle Peak Rd. Phoenix Distribution at Paseo Highlands Park. Enter from 35th Ave.	9:00 am – 10:00 am
Budget Suites	2702 W. Yorkshire Phoenix	11:00 am – 12:00 pm
Cactus Trail Apartments	2403 W. Lone Cactus Phoenix	11:00 am – 12:00 pm

This institution is an equal opportunity provider.



Thelda is tweeting! Follow her @TheldaWilliams1

## GREAT CHARITIES TO DONATE TO:

### **ARIZONA HUMANE SOCIETY**

<http://www.azhumane.org/get-involved/give-now/>

**CHILDHELP:** 2120 N. Central Ave #130, Phoenix, AZ 85004

<https://www.childhelp.org/> 602- 271-4500

**PHOENIX CENTER FOR THE ARTS** Love the arts? Want to help ensure that the programming we offer here at the center continues for generations to come? Please visit:

<https://phoenixcenterforthearts.org/support/>

**ANTHEM PETS** Animal Rescue: A Voice for the Voiceless

<http://anthempets.org/> 480-287-3542

**ARIZONA PAWS & CLAWS** [www.azpawsandclaws.com](http://www.azpawsandclaws.com)

**FETCH FOUNDATION:** please go to the following site:

[www.fetchfoundation.com/Newsflash/the-fido-bag-program](http://www.fetchfoundation.com/Newsflash/the-fido-bag-program)

**M.A.I.N.** What We Do - M.A.I.N. - Medical Animals In Need, Dog Rescue in

Phoenix Arizona Kelly Ferreira 480-245-9203 President / Medical Animals In Need

[www.medicalanimalsinneed.com](http://www.medicalanimalsinneed.com) Together we save lives!

**MINI MIGHTY MUTTS** for more information, contact Angie Crouse at 480-304-5654 or

[info@minimightymutts.com](mailto:info@minimightymutts.com) Also check out our website at [www.minimightymutts.com](http://www.minimightymutts.com) Mini

Mighty Mutts is a 501(c) 3 organization. We rescue the underdog!

**OPERATION CARE FOOD BANK** located in North Phoenix, a non-profit Christian

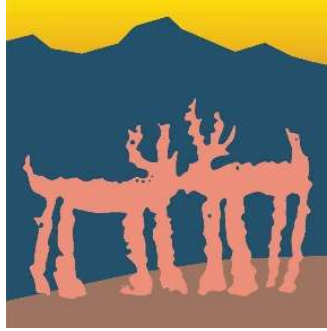
organization committed to helping those in need with food and clothing. For additional

information, please call 602-866-0135, or visit: [info@operationcarefoodbank.org](mailto:info@operationcarefoodbank.org).



# CONTACT DISTRICT 1

District 1 Councilwoman Thelda Williams



City of Phoenix  
200 W. Washington St.  
11<sup>th</sup> Floor  
Phoenix, Arizona 85003-1611  
602- 262-7444  
council.district.1@phoenix.gov

**Report Animal Abuse**

**Phoenix Animal Cruelty Task Force**  
Crimestop - 602-262-6151  
AZ Humane Society - 602-997-7585 ext. 2073  
Maricopa County Sheriff's Office - 602-876-1681

A blue-bordered box with a white background. At the top, the text "Report Animal Abuse" is in bold black font. Below it is a photograph of silhouettes of a horse, a dog, and a cat against a light blue background. At the bottom, the text "Phoenix Animal Cruelty Task Force" is in bold black font, followed by three lines of contact information.

It's never too early...  
Call the  
**Spay Neuter Hotline**  
Before it's too late!

**602-265-SPAY**  
**602-265-7729**  
(Para Español: Oprimos 1)

Valley Wide Low-Cost Spay & Neuter Referrals  
& Trap Neuter Return (TNR) Information

**www.SpayNeuterHotline.org**

The Spay Neuter Hotline is a program of the Animal Defense League of Arizona, PO Box 33093, Phoenix, AZ 85067  
To find out how you can help ADLA, Call 602-273-7842, Email ADLA@adlaaz.org or www.ADLAZ.org

A white-bordered box with a light blue background. The text is centered and uses various font sizes and weights. At the bottom, there are small line drawings of a dog and a cat. The ADLA logo is in the bottom right corner.