



May 8, 2020

CITY EVENTS

UPCOMING PUBLIC CITY MEETINGS

- City Council Policy Session – 1:00 p.m. Tuesday, May 12, please click here to watch meeting <https://www.youtube.com/user/cityofphoenixaz>.
- City Council Public Safety & Justice Subcommittee – 9:00 a.m. Wednesday, May 13, please click here to watch meeting <https://www.youtube.com/user/cityofphoenixaz>
- Zoning Adjustment Hearing – 9:00 a.m. & 1:30 p.m. Thursday, May 14, please follow the link for instructions on how to participate and view the meeting. <https://www.phoenix.gov/cityclerk/site/PublicMeetings/200514002.pdf>
- City Council Policy Session- 1:00 p.m. Thursday, May 14, please click here to watch meeting, <https://www.youtube.com/user/cityofphoenixaz>

For more information on these and all other public City meetings visit:

<https://www.phoenix.gov/cityclerk/publicmeetings/notices>.

City Council meetings are live on Cox Cable Channel 11 and streamed live on

<https://www.phoenix.gov/phxtv> and [facebook.com/cityofphoenix](https://www.facebook.com/cityofphoenix).

To view new rules for meeting participation, please visit

<https://www.phoenix.gov/cityclerk/publicmeetings/city-council-meetings>

Past City Council meetings are posted to YouTube at

<http://www.youtube.com/cityofphoenixaz>.

DISTRICT 1 EVENTS:

DISTRICT 1 COMMUNITY MEETINGS

D1 Community Breakfast Meeting - The upcoming May 29 breakfast has been canceled. Please continue to check back as updates will be posted in this newsletter.

MAY 8 STATEMENT FROM COUNCILWOMAN WILLIAMS ON THE 2020 CENSUS

As of May 7, 56.3 percent of households in Phoenix responded to the census, which is higher than the statewide response rate of 54.8 percent, but still lower than the national average of 58.1 percent.



In District 1, which covers northwest Phoenix, the highest response rate by census tract as of May 7 has been 78.4 percent of households responding to the census. While this is good, that census tract is a small geographical area and only represents a small portion of our district. The response rate in our district drops down to about 41.8 percent in census tracts closer to the Deer Valley area.

COVID-19 has changed so much about our world and while it may seem difficult to plan for the immediate future, the census gives us a unique opportunity now to plan for the next 10 years. That's why it is so important to take the time now to respond to the census; just 10 minutes today will have an impact that will last the next 10 years.

Results from the 2020 Census determines how federal funding is allocated to the state and to Phoenix; that funding has a direct impact on services that you are familiar with.

Your commute: Census results have an impact on highway planning and construction, as well as grants for buses, light rail, dial-a-ride and other transportation options. For example, previous census data forecasted the growth and development along Happy Valley Road. It is because of data collected from previous census' that funding was allocated to expand capacity at the Interstate 17 and Happy Valley Road interchange.

Local schools: Census data determines how money is allocated for the Head Start program and for grants that support teachers and special education.

First responders and public health: Information about how many people live in a city and where they live is critical for emergency response. Data from the census are used to allocate millions of dollars in federal funding each year, including for emergency response services.

Statistics from the 2020 Census will provide baseline numbers not only for funding of federal disaster relief, but also preparation, rescue coordination and even locations for new police and fire stations. The census tells us how we are growing, and helps our communities determine where to build everything from schools to supermarkets, and from homes to hospitals. It helps the government decide how to distribute funds and assistance.

Please take a few minutes and respond to the 2020 Census. There are three ways to respond: iCount2020.info; 1-844-330-2020 English, 1-844-468-2020 Spanish; or by mail. If you have any questions, call my office at 602-262-7444.

CITY NEWS & EVENTS:

For the most updated news and information related to COVID-19 or Coronavirus, please frequently check [phoenix.gov/newsroom](https://www.phoenix.gov/newsroom).

CORONAVIRUS BUSINESS & RESIDENT RESOURCES

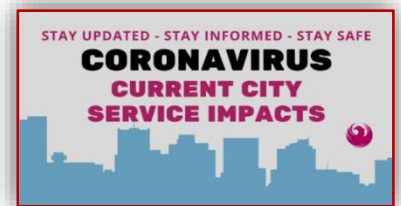


Please visit <https://www.phoenix.gov/Resources> for the latest updates to accessing resources.

Residents with questions about city services and programs are encouraged to call 602-262-3111 or e-mail contactus@phoenix.gov.

CITY OF PHOENIX IMPACTED SERVICES

Please visit <https://www.phoenix.gov/newsroom/em-and-hs/1054> for information on City Services and facilities currently closed or impacted, and City Services available online.



Read this information in Spanish. Lea esta información en español (PDF)

https://www.phoenix.gov/newssite/Documents/COVID19_Newsroom_Main_SP.pdf

PHOENIX PLANNING AND DEVELOPMENT REMOTE VIDEO INSPECTION PROGRAM

The Phoenix Planning and Development Department continue to provide Residential Remote Video Inspections during the COVID 19 emergency. Remote video inspections allow customers to make specific inspection appointments, freeing them from multi-hour arrival windows that are necessary for in-person inspections. For more information please visit to <https://www.phoenix.gov/pdd/remote-video-inspections>.



To see a video on how the remote inspections work, click <https://youtu.be/7cVZdMp8F8Y>.

Permits for all these projects can be purchased online in the Online Project Tools section of the department website at: <https://www.phoenix.gov/pdd>.

PHOENIX AVIATION DEPARTMENT: SKY TRAIN UPDATE

Phoenix Sky Harbor's PHX Sky Train® Stage 2 Project Receives Envision Gold Award for Sustainability

The Institute for Sustainable Infrastructure (ISI) announced on April 30 that Stage 2 of Phoenix's Sky Harbor International Airport Sky Train (PHX Sky Train®) is the recent recipient of an Envision Gold Award for sustainability. This is the airport's first Envision award and the third Envision-awarded project in the State of Arizona.



Stage 2 of the PHX Sky Train® is underway at the Sky Harbor International Airport. This is an extension to the existing 3.2-mile PHX Sky Train, which currently operates between the 44th Street PHX Sky Train station and Terminal 3. When Stage 2 is complete and fully operational in 2022, it will extend another 2.5 miles to the airport's rental car center. The project includes: • aircraft bridges that will carry two future taxiways over the train system; • an elevated station which will accommodate parking, ground transportation, and future development; • an elevated rental car center station built directly into the existing rental car center at the airport; • three traction power substations to provide power to 24 additional transit vehicles.

The project aims to enhance customer service and improve accessibility, ease traffic congestion on Sky Harbor Boulevard, and make travel easier and more efficient between terminals. The project will serve as a catalyst for long term airport growth and adjacent private development. It also helps support the airport's sustainability goals as it will help reduce the daily vehicle count by an estimated 20,000 vehicles per day. The project is funded from rental car facility charges and airline passenger facility charges; no taxpayer dollars are being used to fund this state-of-the-art, sustainable project.

The City of Phoenix Aviation Department worked in close collaboration with several project partners to deliver this award-winning sustainable project, including Gannett Fleming, Inc. (Engineer of Record); Smith Group (Architect); Hensel Phelps (Contractor); Kimley-Horn (Engineering Subconsultant); J2 (Landscape Architect) and Golden Engineering (Lead Envision Consultant). The Construction Management-At-Risk (CMAR) project delivery model was used to fast-track delivery, allowing for overlapping design and construction phases.

"ISI is pleased to present the Envision Gold Award to the City of Phoenix Aviation Department and their project partners for Phase 2 of the PHX Sky Train project," said Melissa Peneycad, ISI's managing director and director of sustainable projects. "The PHX Sky Train eliminates the need for shuttle busses and cars between airport terminals and passenger facilities, reduces road congestion, and encourages the use of more sustainable transportation options, making this automated people mover project an excellent example of sustainability. Hopefully, this project will encourage other major airports to consider ways to reduce their own environmental footprint."



“The Sky Train program, from its early planning stages, has always strived to improve airport access and passenger experience with a transit system that is operationally highly efficient and sustainable. The success of the system in terms of ridership, reduced congestion, and highly favorable reviews from passengers and airport employees speaks to the system’s

function and efficiency,” said Mark Pilwallis, PE, SE, SCBI, a Gannett Fleming vice president and project manager. “The Envision Gold Award is truly exciting for our team – it confirms that our approach to the design and delivery of the project meets a high standard for sustainability. It also clearly shows that the City of Phoenix’s basic criteria and approach to developing sustainable infrastructure is among the best in the country and can be used as a model for others to follow.”

The Envision sustainable infrastructure framework assesses project sustainability across five categories: Quality of Life, Leadership, Resource Allocation, Natural World, and Climate and Resilience. These key areas contribute to positive social, economic, and environmental impacts on a community during the planning, design, and construction of infrastructure projects. Some of the factors contributing to Stage 2 of PHX Sky Train earning an Envision Gold award include:

Increasing service reliability. The grade separated, completely automated, fully monitored people mover system is both safer and significantly more reliable for the traveling public than the series of shuttle busses intermixed with passenger vehicles, taxi limos, busses, and other roadway vehicles it aims to replace. Reliability reports from the existing PHX Sky Train® shows how Stage 2 will help eliminate long shuttle lines, making for a greatly improved experience for the traveling public.

Encouraging travelers to use more sustainable modes of transportation. The PHX Sky Train system is equipped with attractive, eye-catching and informational signage and route information, making the system intuitive, convenient and easy for the traveling public to use. Usage reports from the current PHX Sky Train, coupled with models for Stage 2, show this project will reduce the daily vehicle count by 20,000.

Improved energy efficiency. A number of energy reduction measures were incorporated into this project, resulting in operational energy reductions of 59%. Independent commissioning agents have been contracted for the project to ensure proper and efficient functioning of all energy systems.

Improved infrastructure integration. Throughout project planning and development, the project team worked closely with the City of Phoenix Aviation Department to integrate the extension of the PHX Sky Train with future plans within the airport’s footprint as well as integrate the project with community infrastructure. The PHX Sky Train links the airport’s terminals, major buildings and other facilities, including the car rental center. Before the Sky Train, airport employees and the traveling public had no choice but to rely on cars and a more complicated network of busses. Stage 2 of the PHX Sky Train will provide additional necessary links to airport facilities, as well as the Valley Metro Light Rail System.

PHOENIX DOMESTIC VIOLENCE AWARENESS CAMPAIGN

The City of Phoenix Family Advocacy Center, the Phoenix Police Department and the Arizona Coalition to End Sexual and Domestic Violence are teaming up to spread a message of hope and help for those facing dangerous situations at home during the COVID-19 pandemic.

Domestic Violence Help! is a community initiative designed to share hotline and website information so victims of domestic abuse can move forward as survivors. Police has invited local radio stations, TV stations and billboard companies to join with us in spreading this important public service message. The Phoenix Newsroom will have sharable stories of survivors along with expert advice for people who need help or know someone who needs help.

While the causes of domestic violence are as varied as the individuals involved, we know the following risk factors are increasing due to COVID19:

- Stay at home orders and social isolation could put potential abusers closer to their victims
- Victims may not have access to the same network of support systems through family and friends
- Economic fears could add increased stress on both the abuser and their potential victim.
- Domestic abuse is about power and control. Abuser may use COVID19 fears to exercise control over their victims
- Victims may worry that shelters or other resources aren't available because of COVID closures—that's not true. Help is available whenever you need it.

The following resources are available:

- The Family Advocacy Center: 602-534-2120
- Find resources at <https://www.phoenix.gov/police/domesticviolence>
- National Domestic Violence Hotline: 800-799-SAFE (7233)
- Arizona Coalition to End Sexual & Domestic Violence: <https://www.acesdv.org/>
- Remember if you can't speak you can text 911.

We invite you to use your social media platforms to share this important message. Finding individual and group support is crucial for victims to develop the strength required to leave the abusive situation and make a better life for themselves.



Domestic Violence Help!



PHOENIX ZOO

➔ Cruise the Zoo Route
▬▬▬ Alternating One-way
Be Prepared to STOP

● Exhibit Guide/Information
◆ Intersection Safety Staff
🍴 Food and Beverage

phoenixzoo
 ARIZONA CENTER FOR NATURE CONSERVATION
Cruise the ZOO

Visit phoenixzoo.org/cruisethezoo for our audio tour.

ENTER
 Enter from Galvin Parkway
 EXIT
 Exit to Van Buren

RULES OF THE ROAD

- Remain in your vehicle during the entire tour.
- For guest safety, all tailgates, van/car doors and hatchbacks must remain closed at all times.
- Follow the guided route. The speed limit is a tortoise-like 4 mph.
- Loud noises are not permitted, including honking, music and yelling.
- Do not feed the animals as they receive a healthy diet from their zookeepers.
- The Zoo is a smoke-free facility, including electronic cigarettes.
- Keep everything in your car and when you leave Zoo grounds, properly dispose of your waste in a trash can or recycle container.

DRIVE SLOWLY
 SPEED LIMIT 4MPH

Enjoy a once-in-a-lifetime opportunity to drive your car through the Phoenix Zoo. “Cruise the Zoo” allows guests to view a variety of zoo animals such as flamingos, giraffes, elephants and more while maintaining safe social distancing measures. The first Drive-thru experience begins today, May 8-11, yet due to a high demand, tickets are only being sold for the last two weekends in May. Please see below:

phoenixzoo
ARIZONA CENTER FOR NATURE CONSERVATION

[VISIT](#) [EXPLORE](#) [CONSERVATION](#) [ENGAGE](#) [SUPPORT](#) [BLOG](#)

SEE THE ZOO LIKE NEVER BEFORE!

UPDATE: EXTENDED BY POPULAR DEMAND!

Due to overwhelming popularity, the Cruise the Zoo event has been extended! The Zoo will now offer the once-in-a-lifetime opportunity to drive your car through the Phoenix Zoo through the month of May, Fridays through Monday, 8 a.m. – 2 p.m., with the final day being Sunday, May 31.

Load up the car with your herd and get ready for a once-in-a-lifetime opportunity to cruise the Zoo!

While we are closed, families have the chance to see the Zoo from the comfort, safety and security of their own vehicle. This event will include a guided, educational audio tour. Food and beverage options are available for purchase.

[Cruise the Zoo](#) allows guests to view a variety of Zoo animals such as flamingos, giraffes, elephants and more while maintaining safe social distancing measures. Get cruisin'!

EVENT DETAILS

Dates:

Friday – Monday: May 8 – 11 (**Sat & Sun SOLD OUT**)

Friday – Monday: May 15 – 18 (**Sat & Sun SOLD OUT**)

Friday – Monday: May 22 – 25

Friday – Sunday: May 29 – 31

Time:

8 a.m. - 2 p.m.

Last vehicle must be in line at 1 p.m.

Members

\$50 per car (restrictions apply | [FAQs](#))

General

\$65 per car (restrictions apply | [FAQs](#))

Phoenix Zoo members will pay just \$50 per vehicle for entrance and the general public fee is \$65 per vehicle. Tickets for this experience will need to be pre-purchased online. Please visit <https://www.phoenixzoo.org/cruisethezoo/>. There will be approximately 600 tickets sold per day, for each of the three days. Once a limit is reached on a particular day, interested guests must select another day. This event is slated to run for the next two weekends in May, Fridays through Sundays. The Zoo will evaluate in the coming week if it will continue beyond May 17. Tickets must be pre-purchased.

“We keep hearing from our guests and members that they can’t wait to get back out and visit the Zoo,” says Phoenix Zoo President and CEO Bert Castro. “This seems like the best way to offer the community a safe activity they can do with their families and loved ones, while also benefitting the Zoo financially throughout our closure.”

Designed to be approximately 30 minutes in length, the Zoo is providing a narrated tour of the route to offer insights, information and facts about the animals that may be seen along the journey. This audio tour is available on the Zoo’s Cruise the Zoo webpage at [phoenixzoo.org/cruisethezoo](https://www.phoenixzoo.org/cruisethezoo) along with a map of the route and an FAQ document. Vehicle size must be no larger than a full-size long bed truck. Max vehicle specs are: 266" L x 81" W x 74" H.

The route will enter and exit at a private gate located in the far southwest corner of the main parking lot with queuing of cars in the lot. The journey takes guests along the Zoo’s outer Tropics Trail, past the habitats of elephants, jaguars, Aldabra tortoises, the Thunderbird Charities Equine Center and continues into the Zoo’s Africa Trail past rhino, hyena, and lion habitats to the front of the Savanna. The route meanders past zebra, flamingos, Monkey Village and winds around the Inner Tropics Trail to pass the Tropical Flights Aviary, orangutan and tiger habitats and then out of the Zoo. Many other animals not mentioned are along the route as well but always keep in mind that animals have the choice to be in various parts of their habitats and may or may not always be seen, similar to a typical daily walking visit of the Zoo.

“We chose a path that would allow for optimal viewing of as many animals as possible,” explains Castro. “This will be great enrichment for our animals, some of who have missed our guests, and our dedicated staff can’t wait to hear the Zoo filled with the sounds of people once again enjoying the Zoo and being inspired by nature.”

The Phoenix Zoo has been closed since March 18, 2020 to do its part in minimizing the spread of COVID-19. With more than 80% of the Zoo’s earned revenue coming from gate admission, food, retail, school groups/fieldtrips, programs, memberships, experiences and hosted events, and the spring season as the busiest time of the year, the Zoo has missed nearly \$4.5 million in revenue during this time.

About the Arizona Center for Nature Conservation

The Arizona Center for Nature Conservation (ACNC) operates the Phoenix Zoo. The ACNC advances the stewardship and conservation of animals and their habitats while providing experiences that inspire people and motivate them to care for the natural world.

The Phoenix Zoo is the only zoo in the Valley accredited by the Association of Zoos and Aquariums and is a non-profit zoological park, serving 1.4 million guests annually. The Zoo is home to more than 3,000 animals, many of which are endangered and threatened species. For information about the Phoenix Zoo, visit www.phoenixzoo.org.



PHOENIX PUBLIC TRANSIT: SERVICE REDUCTIONS CONTINUE



Due to the continued impacts of COVID-19, the city of Phoenix Public Transit Department began reduced bus service on May 4. To see City of Phoenix Operated Routes visit, <https://www.phoenix.gov/newsroom/public-transit/1161>.

The start of the service day will shift to:

- Monday - Friday 5 a.m.
- Saturday and Sunday 6 a.m.

The following service hours are temporarily eliminated:

- Monday - Thursday 11 p.m. to midnight
- Friday and Saturday 11 p.m. to 2 a.m.

Our number one priority is the safety of our riders, drivers and our entire community. As such, we continue urging our riders to use public transit for essential trips only, and to plan extra time for trips as these changes may affect commute times. For more information on impacts to Public Transit services visit <https://www.phoenix.gov/newsroom/public-transit/1078>. The following COVID-19 preventative measures remain in place:

- Passenger limits on buses
- Social distancing of 6 feet or more between riders
- Passengers urged to use a mask or cloth face cover
- Rear door boarding and deboarding
- Driver's area separated with plexiglass
- Hand sanitizer on buses
- Contractors distributing PPE to drivers
- Visual-only fare inspection
- Enhanced vehicle cleaning

For more information on schedules visit valleymetro.org.



PHOENIX PARKS AND RECREATION



The Phoenix area has seen a swift increase in temperatures, with the century mark already being reached in April. As this seasonal weather shift is underway, the Phoenix Parks and Recreation and Phoenix Fire departments remind trail users to "Take a Hike. Do it Right." when enjoying the city's desert parks and mountain preserves.

During the warm weather months, Phoenix Park Rangers recommend hiking during the early morning or evening hours when it is cooler and there is more shade. Hydration is important when participating in any outdoor activity year-round, but is critical when the temperature heats up.

Drink plenty of water before, during and after a hike. Hikers should also practice responsible social and physical distancing guidelines when on the trail. All trail users should follow the important and potentially life-saving hiking safety guidelines.

For the safety of pets, dogs are prohibited on any City of Phoenix trail when the temperature is 100 degrees or warmer. The Arizona Humane Society advises that temperatures in the 90s are also unsafe for pets to be outdoors.



PHOENIX PARKS AND RECREATION: FIRE BAN IN DESERT PARKS & PRESERVES EFFECTIVE MAY 1

The Phoenix Parks and Recreation Department put into effect its annual ban of open fires in the city's desert parks and mountain preserves on Friday, May 1.



In consultation with the Phoenix Fire Department, smoking and charcoal fires are included in the ban due to the extreme fire danger that the combination of low humidity, increased temperatures, excessive dry fuel from a wet winter, and frequent high winds create each spring.

The ban applies to the following areas, but does not apply to the city's flatland parks:

- Camelback Mountain
- Deem Hills Recreation Area
- Papago Park
- Phoenix Mountains Park and Recreation Area
- Phoenix Mountains Preserve
- Phoenix Sonoran Preserve
- North Mountain Park
- Rio Salado Habitat Restoration Area
- South Mountain Park/Preserve

For those using the desert parks and preserve land, the fire ban stipulates the following:

- Open, wood and charcoal fires are prohibited
- Propane or gas grills may be used, but only in established picnic areas
- Smoking outside enclosed vehicles continues to be prohibited

Motorists traveling through or near Phoenix's desert parks and mountain preserves should use extreme care with smoking materials and dispose of those only in their vehicle's ash tray.

To protect their homes, residents whose property borders the city's preserve land may remove dry shrubs, brush and grasses, and trim dead branches from trees within the 10-foot strip of land that borders their property. By creating this 10-foot "buffer zone" residents can help to protect their homes from potential brush fires in the adjacent preserve land.

Preserve neighbors also should check irrigation lines and pool back-flush hoses to ensure that water is not seeping into the preserve. Outside water sources encourage unnaturally dense vegetation growth, which increases fire risk.

For general information regarding removing vegetation, residents can contact a Phoenix Park Ranger at 602-495-5458 or natural.resources.pks@phoenix.gov. Detailed information about Phoenix's 41,000-plus acres of desert parks and mountain preserves, and 200-plus miles of trails, is available at Phoenix.gov/Parks.

PHOENIX HUMAN SERVICES: HEAT RELIEF EFFORTS ADAPT AS COVID-19 RESTRICTIONS REMAIN IN PLACE

Record heat has arrived in Phoenix. Heat can be dangerous, and when temperatures are above 100 degrees, it is important for everyone to stay cool and stay hydrated. Coupled with the public health concerns brought on by the COVID-19 health emergency (coronavirus), staying informed about the resources available to be heat ready is essential.



Heat relief will be available at 12 Salvation Army centers across Maricopa County. Additionally, Phoenix's Human Services Department (HSD) will also continue purchasing water and distributing it to community-based providers that work with vulnerable populations like the homeless and seniors. To make a tax-deductible cash donation for water please call 602-677-6055.

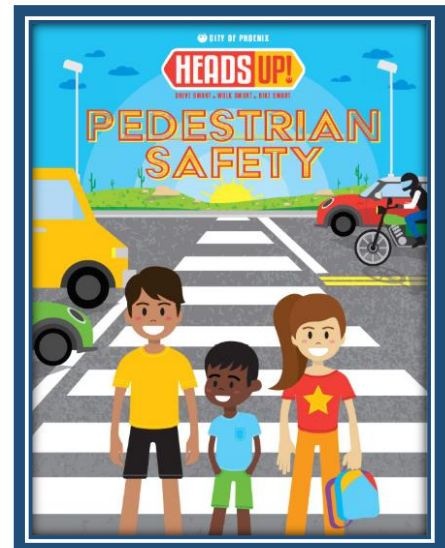
PHOENIX STREET TRANSPORTATION

Youth Activity Books Deliver Important Safety Messages

Young people can learn how to safely cross streets, access public transit, walk to schools and libraries and more through City of Phoenix Street Transportation Department's HeadsUp! Pedestrian Safety Activity Book. The colorful, engaging activity book is available in English and Spanish at <https://www.phoenix.gov/streets/headsup>

Packed with lessons and fun safety activities, the book is aimed at youth from ages 7 to 12. Parents, grandparents or guardians who are looking for educational activities can use the book as a teaching tool by printing select pages or the entire book.

An online answer key is provided in English and Spanish as well. To get the answer key, children complete an online safety pledge that they can print and keep. Learn more about the Street Transportation Department at [phoenix.gov/streets](https://www.phoenix.gov/streets).



DON'T FORGET TO REGISTER TO VOTE

To register to vote:

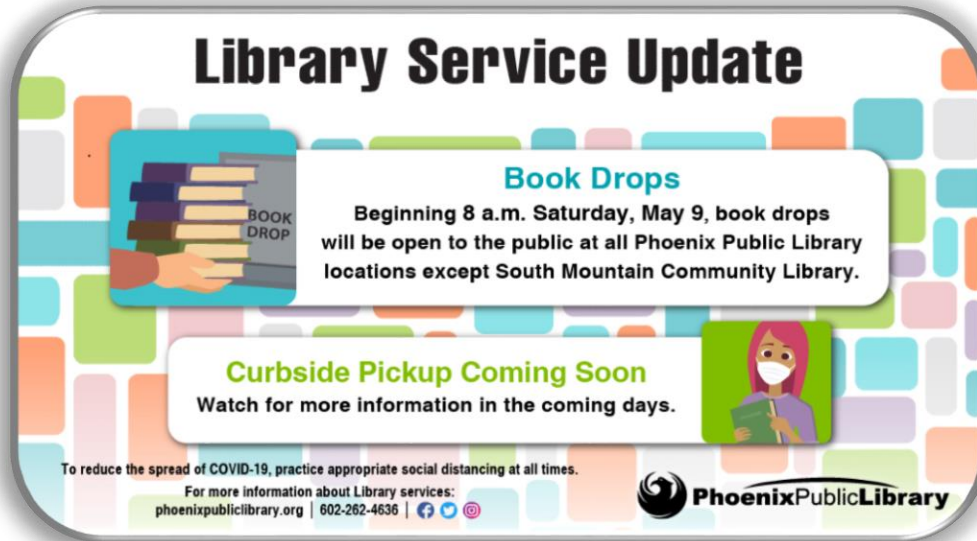
- Register online at: [servicearizona.com](https://www.servicearizona.com) OR
- Fill out a registration form available through:
 - Maricopa County at maricopa.vote
 - Phoenix City Clerk's Office - Phoenix City Hall
200 W. Washington St., 15th floor
 - Most public libraries



Voter registration is administered by Maricopa County. All changes to voter registration information must be completed by the County. City of Phoenix staff does not have the ability to make changes to voter registration information; all changes must be requested through the County Recorder's Office.

PHOENIX PUBLIC LIBRARY UPDATE

Starting on Saturday, March 9, at 8 a.m., book drops at library locations (with the exception of South Mountain Community Library as the South Mountain Community College campus remains closed) will be available for customers to return items they've had checked out since our temporary closure on March 16.



Library Service Update

Book Drops
Beginning 8 a.m. Saturday, May 9, book drops will be open to the public at all Phoenix Public Library locations except South Mountain Community Library.

Curbside Pickup Coming Soon
Watch for more information in the coming days.

To reduce the spread of COVID-19, practice appropriate social distancing at all times.
For more information about Library services:
phoenixpubliclibrary.org | 602-262-4636 | [f](#) [t](#) [@](#)

PhoenixPublicLibrary

PHOENIX PUBLIC LIBRARY

Heartfelt Thanks for “Fill the Shelves”

We are incredibly grateful for the generosity of your support for this year’s virtual food drive, “Fill the Shelves”. Thanks to our library community, St. Mary’s Foodbank Alliance will be able to provide more than 179,000 meals to our neighbors in need. Phoenix Public Library and St. Mary’s Foodbank Alliance have enjoyed a long-standing partnership.



In our previous “normal” our library locations provided a daily nutritious meal to children as part of our year-round Kids’ Café program as well as our annual food drive. This year, with the Coronavirus pandemic, the need for emergency food assistance has been even greater.

St. Mary’s President and CEO Tom Kertis said, “During this pandemic, we have seen more than double the number of clients we normally see while also seeing a dramatic loss of volunteers and food rescue resources. But so many people have stepped forward to support our mission and allow us to say ‘yes’ to all those in need of emergency food assistance.”

Thank you again to everyone who supported “Fill the Shelves”. Together, Phoenix Public Library, St. Mary’s Foodbank Alliance, and YOU...we are all building a stronger community.

ADOT: DISTRICT 1 IMPACTS

Progress continues on new Happy Valley Road bridge over I-17

Concrete deck poured for second half of new structure

The new bridge that will be part of the first full diverging diamond interchange along an Arizona freeway continues to take shape at Interstate 17 and Happy Valley Road in north Phoenix.

Crews have poured the concrete deck for the second half of the new bridge the Arizona Department of Transportation is building to carry Happy Valley Road traffic over I-17. The deck pour took place Friday night and early Saturday morning, May 1-2.



The work is part of a \$50 million ADOT project to reconstruct the I-17 interchanges at both Happy Valley and Pinnacle Peak roads. Construction began in November 2018 and is scheduled for completion in fall 2020.

The first half of the Happy Valley Road bridge was opened to traffic earlier this year. That allowed crews to tear down the old bridge and continue work on the second half of a larger structure over I-17.

The updated I-17 interchange at Happy Valley Road is being constructed with a diverging diamond design, which has grown in use across the country. The interchange will allow Happy Valley Road traffic approaching the bridge over I-17 to cross to the opposite side of the structure so drivers can make direct left turns onto a freeway on-ramp. The design promotes safety by reducing conflict points for opposing directions of travel and enhances traffic flow by limiting traffic signal sequencing.

ADOT also has constructed two smaller “half” diverging diamond interchanges on the new South Mountain Freeway along two roads that do not extend south of Loop 202.

Meanwhile, reconstruction of the I-17 interchange at Pinnacle Peak Road also is moving forward. That interchange will operate as an expanded traditional diamond interchange featuring additional lanes to handle growing traffic along Pinnacle Peak Road.

The project also is adding one lane in each direction along I-17 in the area between the Pinnacle Peak and Happy Valley interchanges.

The I-17 interchange reconstruction project at Happy Valley and Pinnacle Peak roads is part of the Maricopa Association of Governments’ Regional Transportation Plan for the Maricopa County region. A primary source of funding is a half-cent sales tax for transportation improvements approved by county voters in 2004.

With state highways essential to delivering goods and services, ADOT, its employees and its contractor partners are dedicated to delivering transportation improvement projects during the current public health situation. To learn more please visit azdot.gov/covid-19-resource-center.



ADOT: OVERNIGHT CLOSURES ON I-17

Overnight lane and ramp closures scheduled at Interstate 17 and Pinnacle Peak, Happy Valley roads through Friday, May 15

Plan for overnight lane and ramp closures as reconstruction of the Interstate 17 interchanges at Pinnacle Peak and Happy Valley roads continues.

The Arizona Department of Transportation advises drivers to slow down and use caution around construction personnel and equipment while the following closures are in place:

- North- and southbound I-17 will be narrowed to one or two lanes between Pinnacle Peak and Happy Valley roads nightly from 9 p.m. to 5 a.m. beginning Sunday, May 10, through the morning of Friday, May 15.
- The southbound I-17 Pinnacle Peak Road on- and off-ramps will be closed from 9 p.m. Monday, May 11, to 5 a.m. Tuesday, May 12.
- The northbound I-17 Pinnacle Peak Road off- and on-ramps will be closed from 9 p.m. Tuesday to 5 a.m. Wednesday, May 13. The frontage road will remain open.
- The southbound I-17 Pinnacle Peak Road off-ramp and the northbound I-17 Pinnacle Peak Road on-ramp will be closed from 9 p.m. Wednesday to 5 a.m. Thursday, May 14.

Drivers can use the on- and off-ramps at Happy Valley and Deer Valley roads to enter and exit I-17.

Learn more about the new traffic interchanges ADOT is building to improve safety and ease traffic congestion on the [project webpage \[lnks.gd\]](#).

With state highways essential to delivering goods and services, ADOT, its employees and its contractor partners are dedicated to delivering transportation improvement projects during the current public health situation. To learn more, please visit azdot.gov/covid-19-resource-center.

*Schedules are subject to change based on weather and other unforeseen factors. For more information, please call the ADOT Bilingual Project Information Line at 855.712.8530 or go to azdot.gov/contact and select **Projects** from the drop-down menu. For real-time highway conditions statewide, visit ADOT's Traveler Information Site at www.az511.gov, follow ADOT on Twitter @ArizonaDOT or call 511, except while driving.*



COUNCIL DISTRICT 1 INITIATIVES

DEEM HILLS PROJECT UPDATE

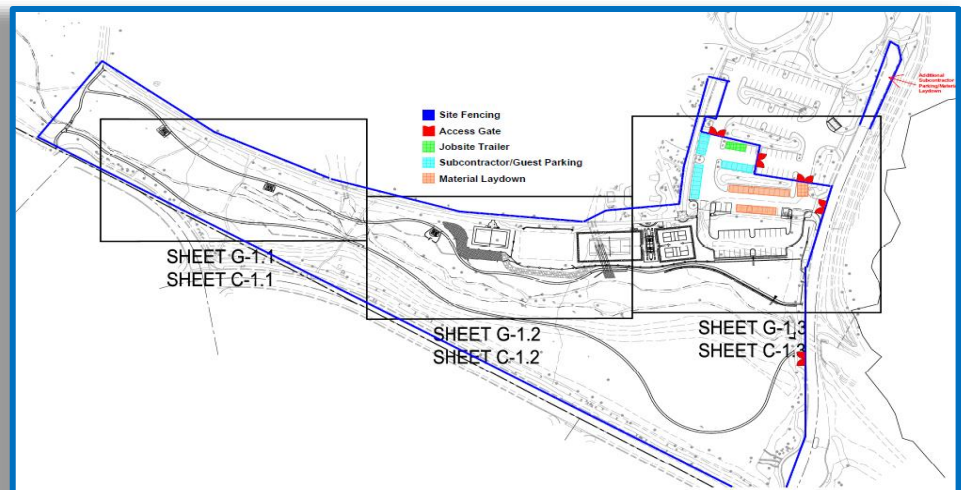


The Parks and Recreation Department are excited to share the updated timeline for the Deem Hills project. Workers will mobilize onsite the week of May 4; and begin salvage through mid-June. After which the demo, underground work, piping and retaining walls will occur through August. The installation of amenities, asphalt and lighting will occur in September through October.

The project will include the following new amenities:

- (1) new lighted volleyball court
- (1) new lighted tennis court
- (2) new lighted pickleball courts
- Parking lot addition, +25 additional spaces
- (1) Large group ramada
- (3) Small picnic ramadas
- .7-mile natural path trail with interpretive signs
- Picnic tables
- Benches
- Drinking fountain

The project is expected to be substantially completed by November 2, 2020 with punch list items finalized by late-November. As with any construction project, if timelines need to be adjusted we will let you know.



PHOENIX SUMMER SAFETY

Please remember to **NEVER, EVER** leave your children or pets in your car!

To view Phoenix Police Sergeant Tommy Thompson's Safety video message visit:
<https://youtu.be/3BbHwoJZ7fw>



PHOENIX STREET TRANSPORTATION DEPARTMENT INTERACTIVE STREET CLOSURE & RESTRICTIONS MAP – UPDATED MAY 8.

To view a listing of current or planned street restrictions please visit:
<https://www.phoenix.gov/streets/street-closures>.

If you have questions or need additional information about planned street closures and restrictions, contact the Street Transportation Department Right of Way Management Office at 602-262-6235 or email rmp@phoenix.gov. For street closure alerts, follow the Phoenix Street Transportation Department on Twitter at [@StreetsPHX](https://twitter.com/StreetsPHX).



DON'T GIVE TO INDIVIDUALS, GIVE TO SHELTERS

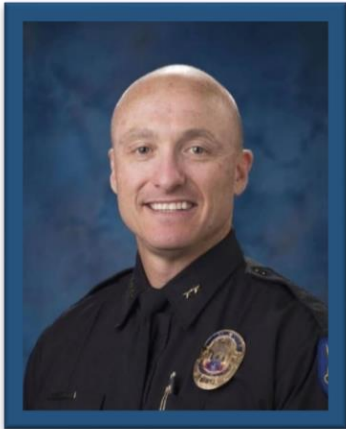
To end panhandling, we must stop giving directly to individuals that panhandle.



Phoenix is full of compassionate and charitable citizens. They want to help those in need. However, giving money to people panhandling doesn't fix problems. To truly help those in need, you can support organizations and services that provide long-lasting care. Please visit <https://www.givesmartaz.org/>.

For more organizations and information on how you can give or volunteer, please visit the <https://www.givesmartaz.org/volunteer>.

NEWS & EVENTS FROM AROUND THE DISTRICT:



Cactus Park Precinct Commander Charlie Consolian is moving to a new position in the Phoenix Police Department. His service over these years at the department and with our District 1 residents in the precinct has been outstanding. We thank him for his dedication, his service and wish him the best. We welcome new Commander Bill Wickers and look forward to working with him. Below is a farewell message from Commander Consolian:

Thank You

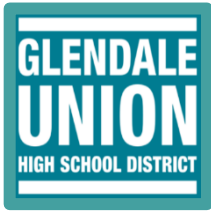
I just want to take a moment to say thank you to the residents and business partners of the Cactus Park Precinct. Effective Monday, May 11th, 2020, I will be transferred from the Cactus Park Precinct to a new position downtown. My replacement will be Lieutenant Bill Wickers who will be promoted to Commander this week and I wish him all the best in his new role within the department. Also, Resource Lieutenant Russ Frederiksen will be retiring after 30 years of service on Thursday May 7th. His replacement will be Lieutenant Scott Cain who has a good background in crime suppression and community engagement. For those of you who regularly attend a block watch or community meeting, please give them a little time to introduce themselves as they navigate through the waters of COVID-19.

For me, I just want to say it was an honor and privilege serving the residents and business partners of the Cactus Park Precinct. Having grown up in the southern portion of the precinct, Cactus Park will always have a special place in my heart. The citizens of this precinct are resilient and committed to improving the quality of life for those who live, work, and travel through the Cactus Park. I am confident that as the new leadership in the precinct moves forward, they will continue to be committed to aggressive crime suppression while embracing community engagement.

Lastly, I remind all of you to stay strong, stay committed, and work together for the betterment of this community and the City of Phoenix. We are all in this together and we can make a positive difference even if it is one step at a time.

All my best,

Charlie Consolian



GLENDALE UNION HIGH SCHOOL DISTRICT NEWS

Grab-and-Go Meal Service

GUHSD is concerned not only with student and staff safety but wants to ensure our students remain well fed during our period of school closures. USDA guidelines allow us to serve meals during “unscheduled” closings to those 18 and younger. Continuing since Monday, May 4, the Grab-and-Go Meal Service hours are Monday through Friday from 8 to 10 a.m. at each GUHSD school including: Apollo, Cortez, Glendale, Greenway, Independence, Moon Valley, Sunnyslope, Thunderbird and Washington.

Breakfast and lunch meals are provided at the same time. Teens and children must be present to receive their meals. No paperwork is required to participate. School closure updates will be available at the following websites:

<https://www.guhsdaz.org/>

<https://www.facebook.com/GUHSDAZ/>

<https://twitter.com/GlendaleUnionAZ>

Grab-and-Go Meal Service
AVAILABLE MONDAY-FRIDAY

Beginning Monday, May 4, the new Grab-and-Go Meal Service hours will be 8-10 a.m. Monday through Friday.

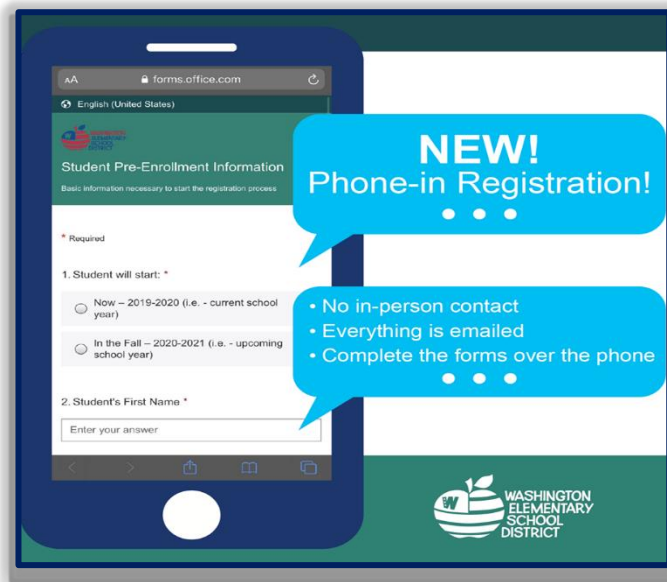
- FREE meals to any child 18 and younger
- No paperwork required
- Children must be present
- Meals include breakfast & lunch

Meals provided at the following locations:

Apollo Cortez Glendale Greenway Independence
Moon Valley Sunnyslope Thunderbird Washington

The graphic is a dark blue rectangle with a white border. It features an illustration of a brown paper bag with the Glendale Union logo and a red apple. The text is in white and teal. The background of the graphic has a subtle pattern of small white dots.

WASHINGTON ELEMENTARY SCHOOL DISTRICT NEWS



WESD Offers New Phone-in Registration

Looking to enroll your child in the WESD? The WESD Welcome and Registration Center launched a new phone-in registration system making it easy to enroll your child in a WESD school. Parents complete a pre-registration form, email required documents and complete the registration over the phone. To get started, visit bit.ly/wesdenroll.

Tumbleweed Elementary Receives \$20,000 Grant from Office Depot

Congratulations to Tumbleweed Elementary for being awarded a \$20,000 grant from Office Depot!

In celebration of Teacher Appreciation Week and to show support during these challenging times, the Office Depot team selected Tumbleweed as a grantee of their 'Teacher Support Grants' to Title I schools. Watch as Tumbleweed's Principal Gessner shares how this \$20,000 grant will directly impact Tumbleweed teachers and students in this exclusive video: bit.ly/tuteachergrant.



Grab and Go at these locations:

NEW TIME! **GRAB AND GO FEEDING PROGRAM**

• WEEKLY PICKUPS ON TUESDAYS •
★ 9:00 to 11:00 a.m. ★

Acacia Elementary	3021 W. Evans Drive, Phoenix, AZ 85053
Cholla Middle School	3120 W. Cholla Street, Phoenix, AZ 85029
Desert View Elementary	8621 N. 3rd Street, Phoenix, AZ 85020
Maryland School	6503 N. 21st Avenue, Phoenix, AZ 85015
Mountain View School	801 W. Peoria, Phoenix, AZ 85029
Ocotillo Elementary	3225 W. Ocotillo, Phoenix, AZ 85017
Orangewood School	7337 N. 19th Avenue, Phoenix, AZ 85021
Richard E. Miller Elementary	2021 W. Alice, Phoenix, AZ 85021
Roadrunner Elementary	7702 N. 39th Avenue, Phoenix, AZ 85051
Shaw Butte Elementary	12202 N. 21st Avenue, Phoenix, AZ 85029
Sunnyslope School	245 E. Mountain View Road, Phoenix, AZ 85020
Sunset Elementary	4626 W. Mountain View Road, Glendale, AZ 85302
Washington Elementary	8033 N. 27th Avenue, Phoenix, AZ 85051

4650 W. Sweetwater Ave., Glendale, AZ 85304
602-347-2600 • wesdschools.org

DEER VALLEY UNIFIED SCHOOL DISTRICT NEWS

As Deer Valley Unified School District continues to support our community through the COVID-19 crisis, we are proud to offer webinars parents. All parents are welcome to watch these webinars featuring national and local experts in the area of social-emotional wellness. The sessions consist of 20-minute interviews with subject matter experts and authors providing practical tips, strategies, and ideas. A Question & Answer portion will follow the presentation. More information and the webinar link is at: www.dvUSD.org/COVID19.





Presents Support for Parenting in the Pandemic



KATEY MCPHERSON

**Coping with Covid:
Positive Parenting Practices for Managing Screen Time and Remote Learning Challenges for High School Students (Grades 9-12)**

May 14, 2020 • 7 p.m.

JOIN US ON ZOOM WITH THE LINK PROVIDED at <http://www.dvUSD.org/COVID19>

Special Guest:
"How to Create a Digital Footprint That Lasts"
Katey McPherson
Educational Consultant



Presents Support for Parenting in the Pandemic



TITIANA JORDAN

**Coping with Covid:
Positive Parenting Practices for Managing Screen Time and Remote Learning Challenges for Middle School Students (Grades 6-8)**

May 21, 2020 • 7 p.m.

JOIN US ON ZOOM WITH THE LINK PROVIDED at <http://www.dvUSD.org/COVID19>

Special Guest:
"Screens and Quarantines: How Much Is Too Much?"
Titiana Jordan
BARK for Families

GREAT CHARITIES TO DONATE TO:

ARIZONA HUMANE SOCIETY

<http://www.azhumane.org/get-involved/give-now/>

CHILDHELP: 2120 N. Central Ave #130, Phoenix, AZ 85004

<http://www.childhelp.org/> 602- 271-4500

PHOENIX CENTER FOR THE ARTS Love the arts? Want to help ensure that the programming we offer here at the center continues for generations to come? Please visit:

<https://phoenixcenterforthearts.org/support/>

ANTHEM PETS Animal Rescue: A Voice for the Voiceless

<http://anthempets.org/> 480-287-3542

ARIZONA PAWS & CLAWS www.azpawsandclaws.com

FETCH FOUNDATION: please go to the following site:

www.fetchfoundation.com/Newsflash/the-fido-bag-program

M.A.I.N. What We Do - M.A.I.N. - Medical Animals In Need, Dog Rescue in

Phoenix Arizona Kelly Ferreira 480-245-9203 President / Medical Animals In Need

www.medicalanimalsinneed.com Together we save lives!

MINI MIGHTY MUTTS for more information, contact Angie Crouse at 480-304-5654 or

info@minimightymutts.com Also check out our website at www.minimightymutts.com Mini

Mighty Mutts is a 501(c) 3 organization. We rescue the underdog!

OPERATION CARE FOOD BANK located in North Phoenix, a non-profit Christian organization committed to helping those in need with food and clothing. For additional information, please call 602-866-0135, or visit: info@operationcarefoodbank.org.



Thelda is tweeting! Follow her @TheldaWilliams1

CONTACT DISTRICT 1

District 1 Councilwoman Thelda Williams



City of Phoenix
200 W. Washington St.
11th Floor
Phoenix, Arizona 85003-1611
602- 262-7444
council.district.1@phoenix.gov



It's never too early...
Call the
Spay Neuter Hotline
Before it's too late!

602-265-SPAY
602-265-7729
(Para Español: Oprimos 1)

Valley Wide Low-Cost Spay & Neuter Referrals
& Trap Neuter Return (TNR) Information
www.SpayNeuterHotline.org

The Spay Neuter Hotline is a program of the Animal Defense League of Arizona, PO Box 33093, Phoenix, AZ 85067
To find out how you can help ADLA - Call 602-273-7842, Email ADLA@adlaaz.org or www.ADLAZ.org

