



Dec. 24, 2020

## **CITY EVENTS**

### **UPCOMING PUBLIC CITY MEETINGS**

- Zoning and Adjustment Hearing – 9:00 a.m. & 1:30 p.m. Tuesday, Dec. 29. Please click on the [Notice of Public Meeting](#) link for meeting information.

City Council meetings are live on Cox Cable Channel 11 and streamed live on <https://www.phoenix.gov/phxtv> and [facebook.com/cityofphoenix](https://www.facebook.com/cityofphoenix).

To view written or video instructions for meeting participation, please visit <https://www.phoenix.gov/cityclerk/publicmeetings/city-council-meetings>

Past City Council meetings are posted on <http://www.youtube.com/cityofphoenixaz>.

### **DISTRICT 1 EVENTS:**

#### **DISTRICT 1 COMMUNITY MEETINGS**

Please continue to check here for updates on future District 1 community events.

Wishing everyone a Merry Christmas!



# **COUNCIL DISTRICT 1 NEWS AND INITIATIVES**

## **RECYCLE YOUR TREE**



Phoenix residents may drop off their live holiday/Christmas trees and wreaths for disposal anytime between Dec. 26, 2020 and Jan. 9, 2021.

### **Drop Off Locations: North Phoenix**

- Deer Valley Park - 19th Ave. and Utopia Rd.
- Paradise Valley Park - 40th St. south of Union Hills Dr.
- Sereno Park - 56th St. and Sweetwater Ave.
- Cactus Park - 38th Ave. and Cactus Rd.
- Mountain View Park - Seventh Ave. south of Peoria Ave.

[North Gateway Transfer Station](#) - 30205 N. Black Canyon Hwy.  
(Dixileta exit)

For a list of all city-wide drop-off locations at Phoenix parks as well as designated private businesses, visit [Christmas Tree Composting](#).

Please remove all decorations, lights, tree stands and metal ornament hangers before dropping them off. They will then be delivered to the city's composting facility to be made into nutrient-rich compost by spring!

### **Tree & Wreath Disposal Requirements**

- Bring the tree & wreath unbagged.
- Remove all decorations, lights, and tinsel.
- Remove the tree stand and all nails/metal stakes.
- Secure tree during transport. Tie it down with material that can be untied or cut easily.
- Only dispose of trees or wreaths in marked drop-off areas.
- Both transfer stations will accept up to two live trees from city of Phoenix residents. If residents wish to dispose of more than two, city of Phoenix customers with their city services bill and matching photo ID can use their one free load of up to 1 ton (2,000 pounds).

### **Container Grown Trees**

Container-grown living trees may be donated for planting in city of Phoenix parks. Parks will only accept 15 gallon-sized or 24" box-sized trees. They can be delivered to a nearby maintenance facility to be planted in a local park.

The trees need to be one of the four following species:

- Aleppo pine (*Pinus halepensis*)
- Eldarica pine or Goldwater pine (*Pinus eldarica*)
- Canary Island pine (*Pinus canariensis*)
- Chir pine (*Pinus roxburghii*)



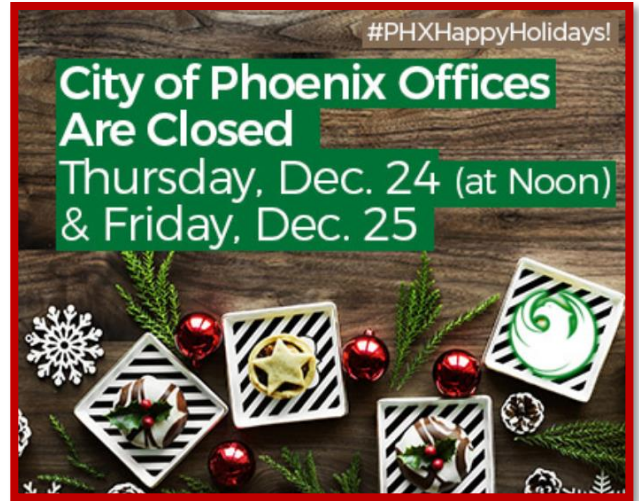
Call City of Phoenix Parks and Recreation Department at 602-495-3762 for drop-off locations or for additional information

## **CITY NEWS & EVENTS:**

### **City Services Affected by the Christmas Holiday**

**Library:** All Phoenix Public Library locations (with the exception of South Mountain Community Library) will be offering [Curbside Service](#) at the hours below :

- Christmas Eve: Thursday, Dec. 24  
8:00 a.m. – noon
- Christmas Day: Friday, Dec. 25, Closed
- New Year's Eve: Thursday, Dec. 31  
8:00 a.m. – noon.
- New Year's Day: Friday, Jan. 1, Closed



**Parking Meters:** All [parking meters](#) are enforced 8 a.m. to 10 p.m. daily, including weekends and holidays.

**Public Transit:** Valley Metro Christmas and New Year's [holiday service schedule](#):

#### Christmas Eve: Thursday, Dec. 24

- Light rail, local bus routes and the rural route operate on a weekday schedule
- No Express or RAPID commuter bus service
- Customer Service is open 8 a.m. – 5 p.m.

#### Christmas Day: Friday, Dec. 25

- Light rail and all bus routes operate on a Sunday schedule
- Customer Service is closed

#### New Year's Eve: Thursday, Dec. 31

- Light rail and all bus routes operate on a weekday schedule
- Customer Service is open 6 a.m.–8 p.m.

#### New Year's Day: Friday, Jan. 1

- Light rail and all bus routes will operate on a Sunday schedule
- Customer Service is closed

### **Solid Waste:** [Holiday Collection Schedule](#)

#### Christmas Day: Friday, Dec. 25, 2020

- Friday collection moves to Saturday

#### New Year's Day: Friday, Jan. 1, 2021

- Friday collection moves to Saturday

**Transfer Stations:** The 27th Avenue and North Gateway Transfer Stations will be closed on Friday, Dec. 25 and Friday, Jan. 1.

- Holiday Hours on Dec. 24  
6 a.m. to noon
- Regular hours on Dec. 31



## PHOENIX COVID-19 RESOURCES

COVID-19

Information

**We're in this together!** Looking for help?

Find information at [Testing, Resources and Impacts](#) and [Phoenix Impacted City Services](#). Phoenix small businesses needing help can call the Phoenix Community and Economic Development hotline to speak to the Small Business Support team at 602-262-5040. You can also find information at [Phoenix.gov/SmallBusiness](https://phoenix.gov/SmallBusiness), the new Small Business COVID Support website.

Additional City of Phoenix resources information can be found by visiting [Phoenix.gov/resources](https://phoenix.gov/resources). Residents in need of emergency assistance can contact any of the participating agencies listed in the [Phoenix CARES Act \(PDF\)](#).

### PHOENIX COVID-19 TESTING BLITZ

#### Mobile Van Testing

**Monday, Dec. 28, 2020**

Travis Williams Family Services Center  
4732 S. Central Ave., Phoenix 85040  
District 7

7:15 a.m. – 1:15 p.m. Appointments required  
at: <https://vincerecancer.com>

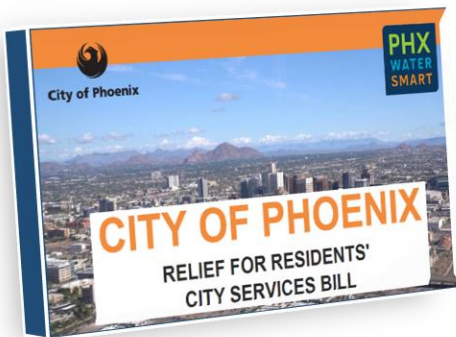
**Tuesday, Dec. 29, 2020**

Mountain View Community Center  
1104 E. Grovers, Phoenix 85022  
Districts D2 and D3

7:15 a.m. – 1:15 p.m. Appointments required at: <https://vincerecancer.com>



For additional testing dates and locations, please visit [Phoenix Testing Blitz](#).



#### Phoenix City Council Approves \$2 Million to Fund the Project Assist Program

The Project Assist program will offer (during the COVID-19 pandemic) the following:

- One-time financial assistance applied to delinquent accounts
- All services and fees on City Services bill (water, trash, sewer) are covered

The customer service staff will continue to contact customers by phone and request the customer's authorization to apply funds to their account.

Residential customers with delinquent accounts are currently being identified through the City Services billing system. Those who may be eligible for funding include: residential account holders who have missed multiple monthly payments within the last 18 months; customers that have made multiple monthly partial payments to a single account throughout the past 18 months; or those who have signed up for deferred payment arrangements due to the pandemic. Accounts with any documented tampering or theft of services are ineligible. Learn more at [phoenix.gov/resources](https://phoenix.gov/resources) or contact the Water Services Department at 602-262-6251.

# NORTHWEST EXTENSION PHASE II

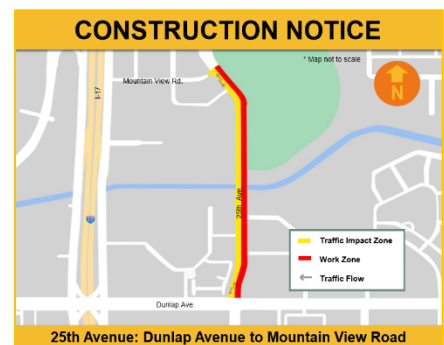
## CONSTRUCTION UPDATE WEEK OF DEC. 21



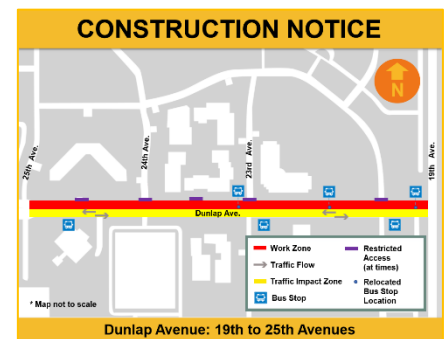
The Northwest Extension Phase II (NWEII) project will extend light rail west on Dunlap Avenue from 19th Avenue, then north on 25th Avenue and across I-17 on Mountain View Road with a terminus on the west side of the freeway near Metrocenter Mall.

Northwest Extension Phase II light rail project construction is underway by the project contractor, Kiewit-McCarthy, A Joint Venture (KMJV) and third party utility companies, such as Salt River Project (SRP).

- 25th Avenue between Dunlap Avenue and Mountain View Road:** KMJV is performing underground utility relocation and roadway construction on 25th Avenue between Dunlap Avenue and Mountain View Road during day and nighttime hours. Traffic lanes will be located on the west side of 25th Avenue and restricted to one north- and one southbound lane. Traffic restrictions will be in place 24/7 through Fri., Jan. 29, 2021 at 5 a.m. [Click here \[t.e2ma.net\]](http://t.e2ma.net) for more information.



- Dunlap Avenue between 19th and 25th avenues:** KMJV and SRP are performing underground utility relocation and roadway construction on Dunlap Avenue between 19th and 25th avenues during day and nighttime hours. Traffic lanes will be located on the south side of Dunlap Avenue and restricted to one west- and one eastbound lane. Traffic restrictions will be in place 24/7 through Mon., May 31, 2021 at 5 a.m. [Click here \[t.e2ma.net\]](http://t.e2ma.net) for more information.



- Rose Mofford Sports Complex and Dog Park:** KMJV is replacing drainage infrastructure in and adjacent to Rose Mofford Sports Complex and Dog Park. The work will involve removing fencing on the southwest corner of the dog park. Temporary fencing will be placed, allowing continued use of the park during construction. In addition, available parking areas will change throughout the process. **The Rose Mofford Sports Complex and Dog Park will remain open during this work.** The work will be completed in late spring 2021. [Click here \[t.e2ma.net\]](http://t.e2ma.net) for more information.



Visit [valleymetro.org/northwest2](http://valleymetro.org/northwest2) [\[t.e2ma.net\]](http://t.e2ma.net) to view the latest updates.

# PHOENIX T2050 REPORT

## Major Phoenix Transportation 2050 Improvements Continue

The city of Phoenix recently released the fourth annual [Transportation 2050 \(T2050\) progress report](#). The report highlights the T2050 programs and projects accomplished and underway during fiscal year (FY) 2020 (July 1, 2019 through June 30, 2020) and a financial summary of T2050 sales tax revenues. The report ensures transparency and accountability in the delivery of T2050-funded programs and projects.

Major highlights from the FY 2020 report include:

- Since the T2050 program began on Jan. 1, 2016, 257 shade structures (bus stop shelters) have been installed, with another 400 planned to be installed by the end of FY 2025.
- Since T2050's inception, 359 new buses and 97 new Dial-a-Ride vehicles have been added to the Phoenix fleet. In FY 2020, 61 new buses, three circulator buses, and 25 Dial-a-Ride vehicles were purchased.
- The Public Transit Department continues providing transportation for essential workers every day throughout the pandemic.
- High Capacity Transit continues to make progress with virtual public meetings on the Capitol/I-10 West Light Rail Extension, early construction activities and public meetings for the South Central Extension/Downtown Hub and public outreach on potential corridors and networks for the Bus Rapid Transit program.
- The Street Transportation Department reported Phoenix's most successful paving season to date. On Dec. 3, 2019, the department celebrated the completion of 296 miles of mill and overlay treatment and 686 miles of other pavement treatments.
- Phoenix installed 181.5 miles of new bicycle lanes since the inception of T2050, with 40.4 miles installed in FY 2020. The city also earned a bronze designation from the League of American Bicyclists for its commitment to improving bicycling conditions.



For more information, visit the [T2050 page](#).



## STREET TRANSPORTATION



The City of Phoenix Street Transportation Department is accepting applications for the Shared Streets for Social Distancing pilot program. Residents may nominate their street(s) to participate in the pilot program by [completing an application](#) by 5 p.m. on Dec. 31, 2020.

Learn more about the pilot program, permitted and prohibited activities and the application process at [phoenix.gov/streets/shared](http://phoenix.gov/streets/shared).

## FINANCE DEPARTMENT

### **City of Phoenix Chief Financial Officer Denise Olson Named a “Trailblazing Women in Public Finance”**

City of Phoenix Chief Financial Officer Denise Olson was honored by Northeast Women in Public Finance as one of 10 “Trailblazing Women in Public Finance” at the Bond Buyer’s Deal of the Year Awards on Dec. 16, 2020.

The Deal of the Year Awards recognize the nation’s most outstanding municipal finance transactions each year, as well as the people behind the transactions. The awards focus on innovation as well as trailblazing women in finance, both public and private.



The honor recognizes Denise for developing solutions to improve the city’s retirement systems; as a leader in procuring millions of dollars of PPE for the fifth largest city in the nation during the COVID-19 crisis; and as an innovator who led a successful \$400 million bond offering in March 2020, with \$290 million focusing on sustainability – a first of its kind for the city of Phoenix. It was one of the only successful municipal bond sales taking place during the pandemic.

Denise began her city of Phoenix career as an economist in 1994, promoting through the ranks before becoming the first woman appointed Chief Financial Officer in 2015. Denise leads a department of 200 employees, managing \$2.3 billion in cash, tax collection, risk and debt management, among other functions. Denise holds a bachelor’s degree in Business Administration, with majors in human resource management and economics, from New Mexico State University, and a Master of Public Administration from Arizona State University.

The city of Phoenix is the fifth largest city in the nation, and the fastest growing city in the nation, with more than 14,000 city employees and a \$3.4 billion annual budget.

To read the entire article visit <https://www.phoenix.gov/newsroom/finance/1669>

## PHOENIX POLICE



You've heard it before, and you'll hear it again: a dog is a man's best friend. But in policework, a dog may just be a man's best colleague, too.

K9 Mattis joined the force at the beginning of 2020, purchased with funds from the [Phoenix Police Foundation](#). He is one of four dogs added to the unit this year, bringing the Phoenix Police K9 Unit to 17 dogs total.

The main priority for these dogs is to be a locating tool for police. Sometimes, that is to locate suspects.

But K9s are also used to find drugs and explosives, or other crime scene evidence. This year, the K9 Unit got a new behavior shaping device to help train dogs in odor detection. Narcotics trainer Lisa Fisher said this device is integral in preparing dogs for their jobs.

The unit also got new bite suits for bite training. Plus, they got a new fenced-in facility with a shade at the Phoenix Regional Police Academy. So now, instead of going to city parks and other public places, officers can bring their K9s to train and play at the Academy. All of this was not possible without the Phoenix Police Foundation, continually supporting the force and ensuring the safety of our community. To read the article and watch video, please visit <https://www.phoenix.gov/newsroom/police/1672>

## PARKS AND RECREATION

### Family Fitness Bingo

Great fun for the entire family during the holidays. Click the image to register and get your bingo card and join the program from Dec. 14 – Jan. 10.

For more information call the Beuf Community Center at 602-534-4754.





## NEWS & EVENTS FROM AROUND THE DISTRICT:

### DEER VALLEY UNIFIED SCHOOL DISTRICT NEWS



#### Curbside Meal Service Begins in January

Meals for any child under 18 will begin Jan. 4. For schedules, visit [www.dvusd.org/food](http://www.dvusd.org/food).

#### CURBSIDE MEAL SERVICE VIRTUAL FOR ALL

- ALL sites with curbside service serving one lunch and one breakfast on Monday, 1/4/21.
- Multiday meals served at TUES. & THURS. locations include heat and eat items. Breakfast and lunch for 2 days on Tuesdays and 3 days on Thursdays.
- Fully prepared, ready-to-eat meals available at WEEKDAY meal service locations.
- Meals may be picked up from ANY location. Service is not limited to the school a student is enrolled in.
- Meals available for ANY child 18 yrs. and under.
- ALL meals continue to be FREE of charge through the 2020-2021 school year.
- FREE On-site meal services available for students attending Free Safe Learning Space.

### WASHINGTON ELEMENTARY SCHOOL DISTRICT NEWS



#### WESD Hiring Teachers for 2021-2022

CONNECT WITH US! **Jan. 13** 3:30 - 5:30 p.m.  
Learn about WESD  
• Teacher Support • Curriculum • Certification  
• Salary • Health Benefits • Alternative Pathways

**Join us for WESD Virtual Teacher Interviews**  
**January 19-21, 2021**

**HIRING:** Elementary, Middle School, Special Education and Music Teachers for the 2021-2022 school year.  
Apply at [jobs.wesdschools.org](http://jobs.wesdschools.org) • Call 602-347-2622

It's time to jump start your career! WESD is hiring teachers for the 2021-2022 school year and offers fantastic benefits such as paid time off, loan forgiveness and weekly professional development.

We will be hosting virtual teacher interviews Jan. 19 -21. To learn more or to register visit [jobs.wesdschools.org](http://jobs.wesdschools.org).

#### WESD Enrolling for 2021-2022 School Year

Registration is now open for the 2021 -2022 school year. In-person registration services are available to families at our Welcome and Registration Center and we have taken the necessary precautions to ensure that we are serving families consistent with established health and safety guidelines.

Remote registration services are also available through phone in and online options. To learn more or to begin the process visit [bit.ly/WESDRegistration](http://bit.ly/WESDRegistration) or call 602-896-6950.

**Now Enrolling**

**2021-2022**

Accepting Open Enrollment and Kindergarten Registration

Welcome and Registration Center  
3200 W. Cholla St., Phoenix, AZ 85029

[wesdschools.org](http://wesdschools.org)  
602-347-2600

- High Quality Teachers
- WESD Created Online and In-person Curriculum
- Social and Emotional Supports

## WESD Accepting Tax Credits

Give back and get back when you make a tax credit donation to your local WESD school! This year, tax credits can help fund items such as risers, scoreboards, soccer goals, marquees, playground equipment, 3-D printers, library books, classroom furniture and more!

Tax credits also help fund extracurricular activities. The best part is that you will receive a dollar-for-dollar reduction on your state income taxes. [www.wesdschools.org/taxcredit](http://www.wesdschools.org/taxcredit) to make an online donation today.



## GLENDALE UNION HIGH SCHOOL DISTRICT NEWS

### Save the Date for Future Freshman Night

Save the date for Glendale Union High School District's upcoming, signature event, Future Freshman Night, on Thursday, Jan. 14 at 6:30 p.m. During this virtual event, eighth-grade students and their families will discover why GUHSD is the top-performing high school district in the Metro-Phoenix area.

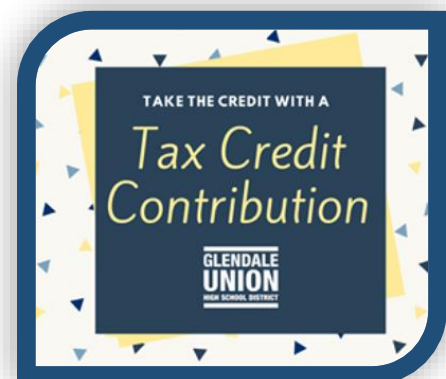


Join us to learn about our nationally recognized academics, championship athletics, fine and performing arts courses, resources for college and career opportunities, plus much more! Please visit [www.guhsdaz.org](http://www.guhsdaz.org) for more information about your local school's Future Freshman Night.

### Take the Credit with a Tax Credit Contribution

With a tax credit contribution, you can take the credit and reduce your Arizona state income taxes! The Arizona State Public School Tax Credit Law allows taxpayers of a tax credit up to \$400 for those filing personal taxes as "married filing jointly" or \$200 for those filing "head of the household" or "single," if they contribute to a public school.

For those still wanting to give back to their local GUHSD high school, we courage you to do so by the deadline of April 15. For more information and to donate online, visit [www.guhsdaz.org](http://www.guhsdaz.org).



## GREAT CHARITIES TO DONATE TO:

### ARIZONA HUMANE SOCIETY

<http://www.azhumane.org/get-involved/give-now/>

**CHILDHELP:** 2120 N. Central Ave #130, Phoenix, AZ 85004

<https://www.childhelp.org/> 602- 271-4500

**PHOENIX CENTER FOR THE ARTS** Love the arts? Want to help ensure that the programming we offer here at the center continues for generations to come? Please visit:

<https://phoenixcenterforthearts.org/support/>

**ANTHEM PETS** Animal Rescue: A Voice for the Voiceless

<http://anthempets.org/> 480-287-3542

**ARIZONA PAWS & CLAWS** [www.azpawsandclaws.com](http://www.azpawsandclaws.com)

**FETCH FOUNDATION:** please go to the following site: [www.fetchfoundation.com/Newsflash/the-fido-bag-program](http://www.fetchfoundation.com/Newsflash/the-fido-bag-program)

**M.A.I.N.** What We Do - M.A.I.N. - Medical Animals In Need, Dog Rescue in

Phoenix Arizona Kelly Ferreira 480-245-9203 President / Medical Animals In Need

[www.medicalanimalsinneed.com](http://www.medicalanimalsinneed.com) Together we save lives!

**MINI MIGHTY MUTTS** for more information, contact Angie Crouse at 480-304-5654 or

[info@minimightymutts.com](mailto:info@minimightymutts.com) Also check out our website at [www.minimightymutts.com](http://www.minimightymutts.com) Mini Mighty Mutts is a 501(c) 3 organization. We rescue the underdog!

**OPERATION CARE FOOD BANK** located in North Phoenix, a non-profit Christian organization committed to helping those in need with food and clothing. For additional information, please call 602-866-0135, or email [info@operationcarefoodbank.org](mailto:info@operationcarefoodbank.org).

Thelda is Tweeting! Follow her at @TheldaWilliams1



# CONTACT DISTRICT 1

District 1 Councilwoman Thelda Williams



City of Phoenix  
200 W. Washington St.  
11<sup>th</sup> Floor  
Phoenix, Arizona 85003-1611  
602- 262-7444  
[council.district.1@phoenix.gov](mailto:council.district.1@phoenix.gov)

