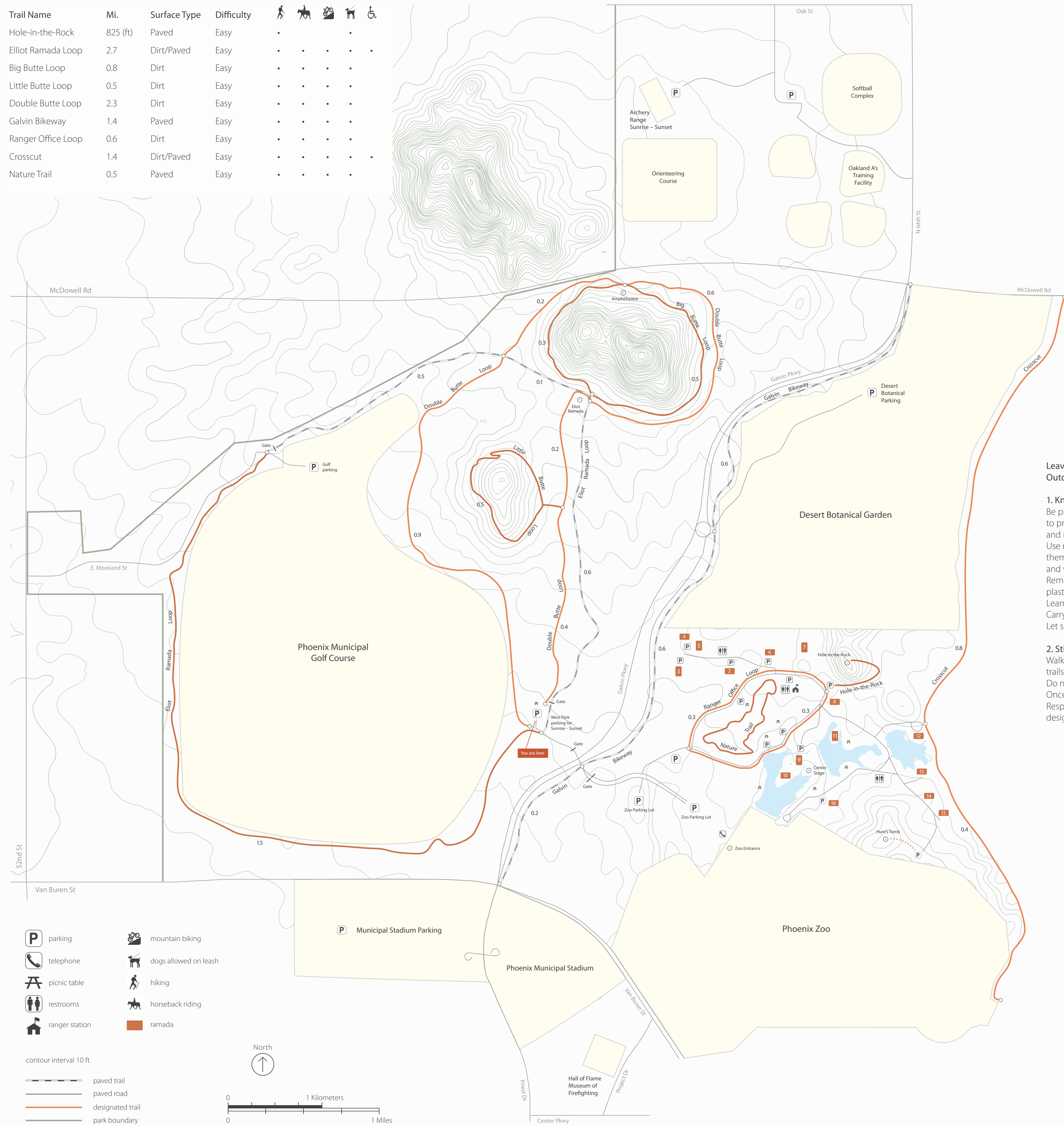


Trail Name	Mi.	Surface Type	Difficulty					
Hole-in-the-Rock	825 (ft)	Paved	Easy	•	•	•	•	•
Elliott Ramada Loop	2.7	Dirt/Paved	Easy	•	•	•	•	•
Big Butte Loop	0.8	Dirt	Easy	•	•	•	•	•
Little Butte Loop	0.5	Dirt	Easy	•	•	•	•	•
Double Butte Loop	2.3	Dirt	Easy	•	•	•	•	•
Galvin Bikeway	1.4	Paved	Easy	•	•	•	•	•
Ranger Office Loop	0.6	Dirt	Easy	•	•	•	•	•
Crosscut	1.4	Dirt/Paved	Easy	•	•	•	•	•
Nature Trail	0.5	Paved	Easy	•	•	•	•	•



**Legend:**

- parking
- telephone
- picnic table
- restrooms
- ranger station
- mountain biking
- dogs allowed on leash
- hiking
- horseback riding
- ramada

contour interval 10 ft

- paved trail
- paved road
- designated trail
- park boundary

North ↑

0 1 Kilometers  
0 1 Miles

**Important Numbers**  
 Emergency 911  
 Crimestop 602.262.6151  
 Papago Park Ranger Office 602.261.8318  
 Papago Golf Course 602.534.8970  
 Phoenix Municipal Stadium 602.495.7239  
 Desert Botanical Garden (non-city) 480.941.1217  
 Hall of Flame (non-city) 602.275.3473  
 Phoenix Zoo (non city) 602.273.1341

The Natural Resources Division is dedicated to preserving, protecting and sustaining cultural and natural resources and providing quality educational and recreational opportunities.

For additional information on: trails, environmental centers, desert parks and preserves, and programs we provide each year, please visit: [phoenix.gov/parks/hikemain.html](http://phoenix.gov/parks/hikemain.html)

**Hiking Safety Information**  
 Tell someone where you will be hiking and when you expect to return. Know the name of the park/and or trail you will be hiking on. Having a trail map is recommended.



Know where you are going and know what kind of terrain you will be hiking on. It is important to remember that the Phoenix mountain preserves are open, undeveloped desert areas. Hikers can encounter rock terrain, rattlesnakes and other potential hazards native to the Sonoran Desert.

Bring plenty of water (one quart for short hikes-more for longer hikes). Wear appropriate footwear, preferably hiking boots. Wear light-colored, comfortable clothing. Bring a hat, sunblock, basic first aid supplies, and cell phone.

**Leave No Trace  
Outdoor Ethics For Frontcountry**

- 1. Know Before You Go**  
 Be prepared! Remember food, water, and clothes to protect you from the cold, heat and rain. Use maps to plan where you're going. Check them along the way so you'll stay on course and won't get lost. Remember to bring a leash for your pet and plastic bags to pick up your pet's waste. Learn about the areas you plan to visit. Carry a cell phone for emergencies. Let someone know where you're going.
- 2. Stick To Trails**  
 Walk and ride on designated trails to protect roadside plants. Do not step on flowers or small trees. Once damaged, they may not grow back. Respect private property by staying on designated trails.
- 3. Trash Your Trash And Pick Up Pet's Waste**  
 Pack it in, Pack it out. Put litter – even crumbs, peels and cores – in garbage bags and carry it home. Use bathrooms or outhouses when available. Use a plastic bag to pack out your pet's waste to a garbage can. Keep water clean. Do not put soap, food, human or pet waste in lakes or streams.
- 4. Leave It As You Find It**  
 Leave plants, rocks and historical items as you find them so others can enjoy them. Treat living and dead plants with respect. Carving, hacking or peeling plants may kill them.
- 5. Be Careful With Fire**  
 Smoke only in an enclosed vehicle. Fires limited to designated areas.
- 6. Keep Wildlife Wild**  
 Observe wildlife from a distance and never approach, feed or follow them. Human food is unhealthy for all wildlife and feeding them starts bad habits. Protect wildlife and your food by securely storing your meals and trash.
- 7. Share The Trails and Manage Your Pet**  
 Be considerate when passing others on the trail. Keep your pet on a maximum six-foot leash to protect it, other visitors and wildlife. Listen to nature. Avoid making loud noises or yelling. You will see more wildlife if you are quiet. Be sure the fun you have outdoors does not bother anyone else. Remember, other visitors are there to enjoy the outdoors too.

For more information on Leave No Trace, please visit [www.LNT.org](http://www.LNT.org) or call 1.800.332.4100

