



PUD Narrative for ASLD Supplier Site C

A +/- 59.4-acre master planned industrial hub located at the southeast corner of 7th Avenue and Pinnacle Peak Road.

Case #: Z-68-20

CITY OF PHOENIX

APR 15 2021

**Planning & Development
Department**



**RVi Planning +
Landscape Architecture**

120 S. Ash Avenue
Tempe, Arizona, 85281



**Bergin, Frakes, Smalley,
Oberholtzer, PLLC**

4343 E. Camelback Road,
Suite 210, Phoenix, Arizona,
85018



WoodPatel

2051 W. Northern Avenue
#100, Phoenix, AZ 85021



CivTech

10605 N. Hayden Road
#140, Scottsdale, AZ 85260



Prepared for:
Arizona State Land Department
1616 W. Adams Street, Phoenix, AZ 85007

1st Submittal: **December 11, 2020**
Hearing Draft: **February 1, 2021**
City Council Adopted: **March 17, 2021**

PRINCIPALS AND DEVELOPMENT TEAM

APPLICANT: CITY OF PHOENIX PLANNING & DEVELOPMENT DEPARTMENT

Contact: Joshua Bednarek, LEED AP ND
200 W. Washington Street, 3rd Floor, Phoenix, AZ 85002
(602) 256-3555, joshua.bednarek@phoenix.gov

LAND OWNER: ARIZONA STATE LAND DEPARTMENT

Contact: Mark Edelman, AICP
1616 W. Adams Street, Phoenix, AZ 85007
(602) 542-6331, medelman@azland.gov

LAND PLANNER: RVI PLANNING & LANDSCAPE ARCHITECTURE

Contact: Alex Stedman
120 S. Ash Avenue, Tempe, Arizona 85281
(480) 994-0994, astedman@rviplanning.com

LAND USE ATTORNEY: BERGIN, FRAKES, SMALLEY, & OBERHOLTZER, PLLC

Contact: Carolyn Oberholtzer
4343 E. Camelback Road, Suite 210, Phoenix, Arizona, 85018
(602) 888-7860, coberholtzer@bfsolaw.com

CIVIL ENGINEER: WOODPATEL

Contact: Michael Young, PE, LEED AP
2051 W. Northern Avenue #100, Phoenix, AZ 85021
(602) 336-7966, myoung@woodpatel.com

TRAFFIC ENGINEER: CIVTECH

Contact: Dawn Cartier, PE
10605 N. Hayden Road #140, Scottsdale, AZ 85260
(480) 659-4250, dcartier@civtech.com

TABLE OF CONTENTS

- 1. Purpose & Intent 5**
 - ___1a. The Arizona State Land Department (ASLD) 5
 - ___1b. Planned Unit Development..... 5
 - ___1c. Project Overview and Goals 6
 - ___1d. General Plan Amendment..... 7
- 2. Existing Site Conditions 7**
- 3. Development Plan 8**
- 4. Land Uses 8**
- 5. Development Standards 9**
 - ___5a. Development Standards Table 9
 - ___5b. Development Standards of General Applicability..... 12
- 6. Area Plan Conformance15**
 - ___6a. Conformance with the Deer Valley Character Plan (DVCP)..... 15
 - ___6b. Conformance with Deer Valley Airport Overlay 17
 - ___6c. Conformance with Complete Streets Guidelines 17
- 7. Design Guidelines18**
- 8. Sustainability.....20**
- 9. Site Infrastructure21**
 - ___9a. Stormwater and Drainage..... 21
 - ___9b. Water and Wastewater 21
 - ___9c. Roadway Infrastructure..... 22
- 10. Additional Provisions22**

LIST OF FIGURES

Figure 1: Regional Context Map

Figure 2: Current General Plan Land Use

Figure 3: Proposed General Plan Land Use

Figure 4: Existing Zoning

Figure 5: Proposed Zoning

Figure 6: Conceptual Land Use Plan

Figure 7: City of Phoenix Street Classification and Arterial Streetscape Exhibit

Figure 8: Deer Valley Airport Overlay

APPENDIX

Appendix A: Legal Descriptions

Appendix B: Comparative Zoning Table

1. PURPOSE & INTENT

1a. The Arizona State Land Department (ASLD)

The Arizona State Land Department (ASLD) manages over 9.2 million acres of state trust land in Arizona. Since 1915, the ASLD's mission has been to manage the assets of a multi-generational perpetual trust in alignment with the interests of the Trust's 13 beneficiaries and Arizona's future. The mission statement of the ASLD is as follows:

“To manage State Trust lands and resources to enhance value and optimize economic return for the Trust beneficiaries, consistent with sound business management principles, prudent stewardship, and conservation needs supporting socio-economic goals for citizens here today and future generations. To act in the best interest of the Trust for the enrichment of the beneficiaries and preserve the long-term value of the State Trust lands.”

State Trust land is often misunderstood in terms of both its character and management. Trust land is different from public land such as parks or National Forests. Trust lands are managed by the ASLD to generate revenue for K-12 schools and 13 additional institutional beneficiaries. The Trust accomplishes its mission through its sale and lease of Trust lands for grazing, municipal, residential, commercial, mining, and open space purposes.

The ASLD, serving as the fiduciary for the Trust, is required by the Arizona Constitution to receive maximum value for the sale or lease of Trust lands for the benefit of the Trust. Given this Constitutional mandate, it is incumbent upon ASLD to carefully plan these properties to maximize their ultimate value. Accordingly, the ASLD is in the process of re-evaluating the existing development plans for the Trust lands in the area and is working with the City of Phoenix to develop plans that are appropriate for the area and that will meet market demands.

1b. Planned Unit Development

The Planned Unit Development (“PUD”) zoning district is authorized by Chapter 6, Section 671 of the Zoning Ordinance of the City of Phoenix (“Phoenix Zoning Ordinance”). A PUD is intended to be a stand-a-lone document that sets forth the regulatory framework, including permitted uses, development standards and design guidelines, for a particular project (“PUD Regulations”). The PUD may only modify provisions within the Phoenix Zoning Ordinance and does not modify other City of Phoenix codes, regulations or requirements. A PUD may include background information and narrative discussion, including purpose and intent statements,

which are intended to illustrate the overall character and vision for the development. Such statements are not regulatory and are not requirements to be enforced by the City of Phoenix.

The PUD regulations apply to all property within the PUD project boundary. The PUD regulations supersede and replace all applicable Phoenix Zoning Ordinance requirements. If there is a conflict between PUD regulations and the Phoenix Zoning Ordinance, including the design guidelines within the Phoenix Zoning Ordinance, the terms of this PUD shall apply. If a provision is not addressed by the PUD, then the Phoenix Zoning Ordinance controls.

1c. Project Overview and Goals

This PUD for ASLD Supplier Site C rezones approximately 59.4-acres of vacant State Trust and City of Phoenix owned land located within the Deer Valley Village. The Site is located at the southeast corner of 7th Avenue and Pinnacle Peak Road. See **Figure 1: Regional Context Map**. In alignment with the City's General Plan land use designations for the subject property, as amended through a concurrent minor General Plan land use amendment, this application proposes development of an industrial supplier site tailored to support the employment development located within the North Phoenix 3,500 PUD (case # Z-37-20-1). The primary goal of this PUD request is to allow for the industrial development of the site to support major economic and employment drivers within the region.

Additional goals and objectives of the ASLD Supplier Site C PUD are to:

- Enhance the value of the State Trust land on behalf of the ASLD's beneficiaries.
- Establish entitlement flexibility to support needs of the industrial suppliers that will serve the major employment generators within the region and benefit the region and City as a whole.
- Establish development and design standards to ensure land use compatibility with surrounding uses to create an appropriately sited industrial development.

1d. General Plan Amendment

The Site currently has a General Plan land use designation of Commerce/Business Park as shown in **Figure 2: Current General Plan Land Use**. This PUD request is accompanied by a Minor General Plan Amendment request to modify the Site’s land use designations to Mixed Use (Commerce/Business Park/Industrial) as shown in **Figure 3: Proposed General Plan Land Use**. This revised land use designation will support the industrial development planned for this Site and in the North Phoenix region.

The Site is also governed by the following additional land planning documents:

- Deer Valley Character Area Plan
- Deer Valley Airport Overlay

The ASLD Supplier Site C PUD will comply with the above-mentioned planning documents.

2. EXISTING SITE CONDITIONS

The ASLD Supplier Site C is approximately 59.4 gross acres in size and is located within the Deer Valley Village at the southeast corner of 7th Avenue and Pinnacle Peak Road. The Site, which is generally flat and does not include significant topographical or natural features, is currently undeveloped. As shown in **Table 1: Surrounding Uses**, below, the Site is surrounded by other lands with Industrial and Public/Quasi-Public land use designations. The subject property is bisected by a 66-foot-wide City owned parcel that extends to Pinnacle Peak Road. This City owned parcel shall be treated as a non-collector/non-arterial street for purposes of landscape and setback requirements.

| Location | APN | General Plan | Zoning | Land Use |
|-----------------|---------------------------|---------------------|---------------|---------------------|
| North | 210-16-009, 210-16-008 | Industrial | CP/BP, A-1 | Vacant, Industrial |
| West | 209-01-005, 209-01-020 | Industrial | A-1 | Vacant |
| South | 209-01-003T | Public/Quasi-Public | A-1 | Deer Valley Airport |
| East | 209-02-468, 209-02-467 | Industrial | CP/GCP | Industrial |

3. DEVELOPMENT PLAN

The ASLD Supplier Site C PUD provides the regulatory framework for development of an industrial supplier site to promote regional economic development. As shown on **Figure 4: Existing Zoning**, the Site is currently zoned A-1, and rezoning the Site to PUD will establish the necessary development standards and permitted uses to allow for the development of the property as an industrial supplier site while maintaining compatibility with surrounding uses. See **Figure 5: Proposed Zoning**.

The ASLD Supplier Site C PUD provides for a variety of industrial land use types that are consistent and compatible with adjacent properties. The flexibility and enhancement of site design standards proposed with this PUD offers a desirable improvement over conventional zoning standards and directly promotes the appropriate and efficient use of land and infrastructure. See **Figure 6: Conceptual Land Use Plan**.

4. LAND USES

Uses allowed within the ASLD Supplier Site C PUD include the following:

- All uses permitted in the A-2 Light Industrial District per Zoning Ordinance Section 628.B&C.
- All uses permitted in the Commerce Park District: General Commerce Park Option per Zoning Ordinance Section 626.F.

PROHIBITED USES

- Single family and multifamily residential development

5. DEVELOPMENT STANDARDS

5a. Development Standards Table

Development Standards are essential to maintaining land use compatibility between neighboring uses. This ASLD Supplier Site C PUD utilizes the A-2 Industrial District with a MR Mid-Rise District overlay as base zoning designations with modifications indicated below. Development standards within this PUD are generally in conformance with the standards of these districts with exceptions to promote enhanced perimeter buffering standards and allow for structure heights that facilitate the unique needs of the future industrial uses on the property. These standards are identified in **Table 2: Development Standards**. Note that the 66-foot-wide city owned parcel bifurcating the site shall be treated as a non-collector/non-arterial street for purposes of landscape and setback requirements.

| Table 2: Development Standards | |
|---|---|
| <i>Building Height:</i> | <p>Eighty (80) foot maximum height.</p> <p>In addition to the building height exceptions outlined in the Zoning Ordinance (Section 701.B), non-habitable mechanical equipment and structures that may include, but are not limited to, elements such air separators, exhaust pipes, storage tanks, and gas processing equipment are permitted up to one hundred fifty (150) feet in height.</p> |
| <i>Open Space:</i> | <p>For any property development in excess of fifty-six (56) feet: A minimum of ten (10%) percent of the parcel's total net area shall be open space with appropriate landscaping and other employee-oriented amenities as identified within <i>Section 7: Design Guidelines</i>.</p> |
| <i>Building setback adjacent to a collector / arterial street:</i> | Min. fifty (50) feet |
| <i>Building setback adjacent to a non- collector / non-arterial street:</i> | Min. twenty (20) feet |
| <i>Building setback not adjacent to a street:</i> | Min. zero (0) feet |

Table 2: Development Standards (Continued)

| Screening | |
|--|---|
| <i>Screening for Parking or Loading and Unloading Areas where within one hundred fifty (150) feet of a Residence District:</i> | Per A-2 Code - For employee and customer parking a four (4) to six (6) foot wall or landscaped berm is required. The wall may be three (3) feet high if the parking area is located in a yard as specified in Section 628.E.2.b(1). |
| | Per A-2 Code - In areas used for truck parking, loading or unloading, an eight (8) foot high wall is required. |
| <i>Screening for Open Storage Use:</i> | Per A-2 Code - Any outside storage or use within one hundred (100) feet of a residential district or any public street shall be screened by a six (6) foot high solid fence or wall. |
| | Per A-2 Code - Height of Open Storage: Open storage shall be no higher than six (6) feet plus one (1) foot in height for every additional three (3) feet of setback from a property line. If the storage area is within one hundred fifty (150) feet of a public street, screening in the addition to the required six (6) foot high solid fence or wall shall include fifteen (15) gallon trees spaced no more than twenty-five (25) feet apart and with an adequate watering system. |
| <i>Screening for Open Storage Use:</i> | Per A-2 Code - Except for vehicle parking areas, no outdoor uses, outdoor storage, or open buildings shall be within seventy-five feet of a public street. |
| <i>Screening for Surface Parking</i> | Per MR Code - For any site development in excess of fifty-six (56) feet: all surface parking must be buffered by landscaping regardless of whether located in side yards or rear yards. |

Table 3: Landscape Development Standards

| | |
|---|---|
| <i>Landscape setback adjacent to a collector / arterial street:</i> | Min. fifty (50) feet |
| <i>Landscape setback adjacent to a non-collector / non-arterial street:</i> | Min. twenty (20) feet |
| <i>Landscape setback not adjacent to a street:</i> | Min. zero (0) feet |
| LANDSCAPE SETBACKS ALONG ARTERIAL AND COLLECTOR ROAD FRONTAGES | |
| Plant Type: | Minimum Planting Size |
| <i>Trees*</i> | Min. 2-inch caliper (50% of required trees) Min. 3-inch caliper or multi-trunk tree (25% of required trees) Min. 4-inch caliper or multi-trunk tree (25% of required trees) |
| <i>Shrubs</i> | Min. five (5) 5-gallon shrubs per tree |
| <i>Groundcover</i> | Min. 60% live coverage |
| DETACHED SIDEWALKS ALONG ARTERIAL AND COLLECTOR STREETS | |
| <i>Detached Sidewalk</i> | <u>Sidewalk Width:</u> Minimum 6-feet <u>Landscape Strip:</u> Minimum ten (10) feet |
| PARKING LOT AREA | |
| <i>Interior surface area (exclusive of perimeter landscaping and all required setbacks)</i> | Min. 10% |
| <i>Landscaped planters</i> | At ends of each row of parking & approximately every 110' |
| <i>Landscaped planters**, single row of parking</i> | Min. 120 sq. ft.*** |
| <i>Landscaped planters**, double row of parking</i> | Min. 240 sq. ft.*** |
| <i>Additional parking lot landscaping</i> | As needed to meet 10% minimum requirement, evenly distributed throughout the entire parking lot. Min. interior dimension 5' (length and width). |
| Plant Type: | Minimum Planting Size |
| <i>Trees</i> | Min. 2-inch caliper (60% of required trees) Min. 1-inch caliper (40% of required trees) |
| <i>Shrubs</i> | Min. five (5) 5-gallon shrubs per tree |

| Table 3: Landscape Development Standards (Continued) | |
|---|---|
| RETENTION BASINS | |
| <i>Stormwater Management</i> | Where conditions allow, retention basin shall be planted with a minimum of 60% live coverage of plants to serve as bioswales reducing urban runoff and promoting vegetation on the site |
| Plant Type: | Minimum Planting Size |
| <i>Trees</i> | Min. 2-inch caliper (40% of required trees) Min. 1-inch caliper (60% of required trees) |
| <i>Shrubs</i> | Min. five (5) 5-gallon shrubs per tree |

* Minimum double row of trees planted 20 feet on center or equivalent groupings.

** Measured from inside face of curb to inside face of curb.

*** Not to exceed the length of a standard City of Phoenix parking stall. Modifications to the square footage may be approved by Planning and Development Department if the overall intent of the standard is being met.

5b. Development Standards of General Applicability

Development standards relating to the following elements within ASLD Supplier Site C shall adhere to City of Phoenix Zoning Ordinance standards except as modified through this PUD.

PARKING

The minimum number of required parking spaces shall be as set forth in Section 702 of the Phoenix Zoning Ordinance. This provision shall not limit the ability of the applicant or end user to apply for a zoning adjustment application to further modify any development standard or ordinance provision relating to parking.

FENCES AND WALLS

All screen walls and fences shall comply with the Phoenix Zoning Ordinance, Section 703: Landscaping, Fences and walls.

SHADE

Shading of pedestrian spaces is necessary for summer comfort. Any plazas, courtyards, and sidewalks must contain spaces within them that are shaded in the summer months, but that allow for sun penetration in the winter months. The following shade provisions apply:

- Minimum 50% shading of all publicly accessible sidewalks and walkways by means of vegetation at maturity and/or shade structures.
- Minimum 75% shading of all publicly accessible sidewalks and paths along arterial and collector roadways by means of vegetation at maturity and/or shade structures.

LIGHTING

Exterior lighting throughout the site shall be in conformance with the provisions set forth in City of Phoenix Zoning Ordinance Section 507.Tab.A.II.A.8: Site Lighting and in Phoenix City Code Section 23-100: Outdoor Lighting.

SIGNS

Signs are allowed within ASLD Supplier Site C pursuant to City of Phoenix Zoning Ordinance Section 705. A comprehensive sign plan shall be processed for approval for all commercial uses in accordance with Section 705.E.2 of the Phoenix Zoning Ordinance.

PEDESTRIAN CIRCULATION

Pedestrian circulation and connectivity is required for ASLD Supplier Site C. See **Figure 7: City of Phoenix Street Classification and Arterial Streetscape Exhibit**. The following provisions shall guide pedestrian connectivity across the site:

- A publicly accessible detached meandering sidewalk shall be provided along perimeter arterial and collector street frontages. This sidewalk shall be a minimum 75% shaded at maturity.
- Pedestrian accesses to the site from the sidewalk should be attractive and inviting and separated in distance from vehicular traffic to provide a design that accentuates and prioritizes the importance and care of patrons arriving to the site on foot.
- Generally, connect all public building entrances and exits, parking areas, and all public sidewalks utilizing the minimum possible distance and providing the most direct route.
- Building entrances should be identifiable at a pedestrian scale and directly accessible from a public sidewalk. The developer shall provide ADA compliant pedestrian access

to and from the site, connecting the sidewalk / sidewalks and the main entrance of the building in the most direct route. At properties located in signalized intersections (or future signalized intersections), additional ADA complaint pedestrian paths shall be provided from the traffic signal (or future site of a traffic signal) to the entrances of the building in the most direct route.

- Appropriate street lighting shall be provided in accordance with City of Phoenix Standards.
- Sidewalks along the site perimeter shall be detached and shade shall be provided along both sides of the sidewalk with single-trunk trees. Single trunk trees should alternate with other vegetation within the landscape strip to discourage pedestrians from crossing mid-block.
- All cross-access agreements within the development shall contain a pedestrian pathway.
- Enhanced surfacing materials, such as stamped or colored concrete or other pavement treatments, that visually contrast with the adjacent parking and drive aisle surfaces shall be provided to delineate all areas where pedestrian paths cross drive aisles.
- The developer shall dedicate a 30-foot-wide multi-use trail easement (MUTE) along Pinnacle Peak Road and construct a minimum 10-foot wide multi-use trail (MUT) within the easement in accordance with the MAG supplemental detail and as modified and approved by the Planning and Development Department. Where conflicts or restrictions exist, the developer shall work with the Site Planning section on an alternate design through the technical appeal process.

BIKE INFRASTRUCTURE

Bike lanes exist along Pinnacle Peak Road. Development within ASLD Supplier Site C shall provide bike parking in accordance with City of Phoenix standards. Bike parking areas shall:

- be paved with a solid surface;
- include a ramp for access;
- be located within close proximity to building entries; and
- have a minimum 50% shade coverage.

ACCESS CONTROL

Future proposed driveway access locations shall meet the standards identified in the City of Phoenix Street Planning and Design Guidelines. Access should be oriented to utilize signalized intersections or future signalized intersections.

6. AREA PLAN CONFORMANCE

The ASLD Supplier Site C is governed by a series of applicable area plans to ensure the site's regional compatibility. These plans include the Deer Valley Character Plan, Deer Valley Airport Overlay Plan, and the city's Complete Streets Guidelines. Below is a discussion of how the ASLD Supplier Site C will be in conformance with these above-mentioned area plans.

6a. Conformance with the Deer Valley Character Plan (DVCP)

The ASLD Supplier Site C is located within the Deer Valley Village and is governed by the Deer Valley Character Plan (DVCP). The Deer Valley Village is distinguished by its attraction for business, variety of housing types and density ranges, the Phoenix Deer Valley Airport, and easy access to the regional freeway system. The Deer Valley is also characterized by its considerable commerce and industrial land which is highly suitable to area employment and commerce needs. Below is a description of the ways in which the ASLD Supplier Site C is in conformance with relevant objectives of the DVCP.

LAND USE GOALS

- Support General Plan Land Use Map and zoning changes that will facilitate the location of employment generating uses in each of the designated employment centers (DVCP pg. 10).
- Encourage land uses that promote the growth of entrepreneurs or new businesses in Phoenix in appropriate locations (DVCP pg. 10).
- Discourage the location of incompatible uses near base industrial clusters (DVCP pg. 10).
- Maximize use of existing infrastructure and carrying capacity by encouraging redevelopment and infill (DVCP pg. 10).

Response: This PUD establishes the necessary conditions to support robust industrial development of this Site. This will be an employment generating use which will support regional employment centers including the North Phoenix 3,500 PUD employment hub. The rezoning of this site to PUD will facilitate new business investment within this industrial area of the DVCP. Given that this area is already home to several industrial/employment uses, this is an appropriate location for continued industrial development expansion capitalizing on existing infrastructure carrying capacity and land use compatibility.

DESIGN

- Pursue creative, innovative, and environmentally-sound methods to capture and use stormwater and urban runoff for beneficial purposes (DVCP pg. 13).
- Encourage construction plans that reflect a systematic and integrated approach to building design, civil engineering, and landscape architecture in order to maximize the potential for rainwater harvesting and stormwater retention for landscape watering (DVCP pg. 13).

Response: Detailed engineering will be provided during future phases of the development process identifying specifics of the grading and drainage plan to capture and manage onsite stormwater. A combination of retention basis and bioswales will reduce urban runoff and promote vegetation on the site. The ultimate construction plans will integrate the building design, civil engineering, and landscape design to maximize this stormwater management potential.

DESIGN PRINCIPLES

- Design industrial sites to be well screened from adjacent sensitive land uses such as residential (DVCP pg. 14).

Response: While the ASLD Supplier Site C is not located adjacent to sensitive land uses such as residential, appropriate screening measures will be implemented to promote an attractive streetscape and to ensure compatibility with adjacent uses. **Table 2: Development Standards** identifies enhanced building and landscape setback requirements for the site. Per the landscape design guidelines identified in **Section 5b**, a double row of shade trees is required along the site's arterial and collector street frontages and 60% live coverage of plant materials are required within the front yard area. Screen walls will be provided were appropriate and necessary.

OPPORTUNITIES FOR GROWTH & INVESTMENT

- Maintaining Shaded Streetscapes: Many parts of the village have a lack of walkable, shaded streetscapes, especially in areas with existing transit. Enhancements to the streetscape should be encouraged whenever possible (DVCP pg. 17).

Response: The ASLD Supplier Site C will be in conformance with the Complete Streets elements identified in **Section 6d** of this Narrative. These Complete Street elements include the provision of tree-lined detached sidewalks with 75% shading along arterial and collector roadways. These enhanced sidewalk improvements will support pedestrian circulation within the area.

6b. Conformance with Deer Valley Airport Overlay

Section 658 of the Phoenix Zoning Ordinance outlines regulations relating to the Deer Valley Airport Overlay. The Deer Valley Airport Overlay (DVAO) is intended to protect the health, safety and welfare of persons and property in the vicinity of the Deer Valley Airport and to protect the long term viability of the airport by ensuring land use compatibility with airport operations, projecting navigable airspace from physical encroachment, and requiring permanent notice of flight operations to property owners.

As shown on **Figure 8: Deer Valley Airport Overlay**, the ASLD Supplier Site C site is located within Area 1 of the Deer Valley Airport Overlay. This is the least restrictive portion of the DVAO. Per Area 1 of the DVAO, the underlying zoning shall establish the allowable height for a parcel. In this case, this the height standard identified within **Table 2: Development Standards** establishes the allowable height for the site. Note that all heights shall be measured from the existing natural grade of the site.

Per the DVAO Avigation Notice Requirement, the property owner shall provide a copy of the recorded avigation notification to the Planning and Development Department when applying for a building permit. This notice shall apply to the expansion of an existing building or new construction great than 2,000 square feet in size.

6c. Conformance with Complete Streets Guidelines

In 2018 the City of Phoenix adopted Complete Streets Design Guidelines with the goal promoting health and safety through active streetscapes. Streets within the ASLD Supplier Site C PUD shall conform to the following elements of the Complete Streets Design Guidelines:

- The unique character of the area shall be considered during the design of street projects.
- Streets shall be designed to promote safety for all users, particularly children, the elderly, those with disabilities, transit users and more vulnerable modes (walking, bicycling, transit).
- Shade shall be a primary technique to reduce ambient temperatures and to reduce direct sunlight exposure for pedestrians and cyclists.
- Streetscape designs shall include pedestrian infrastructure with pedestrian through zones free of impediments.
- Detached sidewalks will be provided along arterial and collector roadways. These detached sidewalks will be located between a double row of trees which will provide 75% shading at full maturity.

- A multi-use trail easement (MUTE) shall be dedicated on the south side of Pinnacle Peak Road. Trail and landscape trail improvements shall be provided within this easement per City of Phoenix Standards.

7. DESIGN GUIDELINES

The ASLD Supplier Site C development plan will promote flexibility in uses and site design while providing consistent design standards and guidelines to direct development within the site. The design guidelines identified below serve as a tool to ensure ongoing compatibility across the site as the project develops. The ASLD Supplier Site C will adhere to the following PUD Design Expectations:

SUSTAINABILITY

Objective – Provide Thermal Comfort for all Users

- Minimum 50% shading of all publicly accessible sidewalks and walkways by means of vegetation at maturity and/or shade structures.
- Minimum 75% shading of all publicly accessible sidewalks and trails along arterial and collector roadways by means of vegetation at maturity and/or shade structures.

ARCHITECTURAL DESIGN

Objective – Visual interest with unified elements to establish a sense of place

- Incorporating innovative textures, materials, colors: Building facades facing arterial roadways shall incorporate a minimum of two (2) different materials.
- Distinct Entry Features: Public building entries are to be clearly identifiable and shall incorporate functional shade elements such as awnings and canopies to create a comfortable entry experience while addressing pedestrian scale.

OPEN SPACE DESIGN

Objective – Provide diversified amenities for optimum recreational use and gathering places for community interaction

- Improved plazas, courtyards, break areas: A minimum of one (1) enhanced pedestrian plaza and/or promenade shall be provided within commercial parcels that exceed five (5) acres in size. The plaza and/or promenade shall be a minimum of 500 square feet and shall include shading and seating elements as well as landscaping elements including enhanced surfacing materials (e.g. stamped or colored concrete), specimen plantings, and lighting.

SITE DESIGN / DEVELOPMENT

Objective – Innovative design of access, circulation, privacy, security, shelter, and other factors to create a unique location that complements the surrounding context

- Mitigation of adverse effects (screening, landscape buffers, wall heights, etc.): Building and landscape setbacks are to be provided according to the standards identified in **Table 2: Development Standards**. Front setback areas to be enhanced by providing the following:
 - Double row of trees
 - 60% live coverage by landscape materials
 - Parking areas to be screened minimum 30-inch solid screen wall and associated landscaping.
- Design of access: Future proposed driveway access locations shall meet the standards identified in the City of Phoenix Street Planning and Design Guidelines. Access should be oriented to utilize signalized intersections or future signalized intersections.

LANDSCAPING ENHANCEMENTS

Objective – Provide shade and soften the look of the development to create a more natural environment

- Maturity of trees: Trees provided along arterial streets are to meet City of Phoenix minimum required caliper sizes in accordance with Section 507, Tab A.
- Xeriscaping: Drought tolerant plants identified on the Arizona Municipal Water Users Association (AMWUA) Low Water Plant List shall make up a minimum of 75% of any approved landscape palette.

8. SUSTAINABILITY

The following sustainability practices are encouraged throughout ASLD Supplier Site C. Development must incorporate a minimum of five (5) of the following sustainability principles as approved by the Planning and Development Department. Items shown in italics will be measurable and enforceable by the City.

- *Incorporate LED and energy efficient lighting technology into all lighting constructed on the site, including parking lots and streets.*
- *Use roofing materials that specify a high Solar Reflectance Index for a minimum of 75% of the roof surface area.*
- *Provide landscape and stormwater management that seek to retain storm runoff where appropriate and allow it to provide water for landscaping and improve groundwater conditions.*
- *Utilize “Smart” irrigation control systems.*
- *Utilize efficient drip irrigation technology.*
- *All landscape lighting to be on timer controls.*
- Shade surface parking spaces using vegetation, low-sloped structural shading with a minimum SRI of 29, or a similar material that achieved shading with high reflectivity.
- Building designs should respond to the southwest climate by incorporating materials and design methods suitable for the region.
- Select building materials and colors to reduce overall heat gain.
- Design to reduce energy loads by addressing passive design elements (i.e. daylight, natural ventilation, solar mass) and active design elements (i.e. environmental conditioning methods, radiant heating and cooling, shared building systems).
- Provide slope stabilizing plant material where appropriate to limit erosion.
- Where possible, locate shade trees along western building facades to reduce solar heat gain.

9. SITE INFRASTRUCTURE

9a. Stormwater and Drainage

The Site is undeveloped and generally slopes mildly from northeast to southwest at approximately a half percent (0.5%). The Central Arizona Project Canal (CAP) is approximately one half mile upstream which intercepts the majority of the offsite storm water except for specific overflow locations. The Site receives offsite storm water from the north and east. The Site is within a FEMA Zone X area and is not within a FEMA Special Flood Hazard Area.

The Site will be required to intercept upstream offsite storm water and convey it through or around the Site and discharge at the historical outfall location. Per the City of Phoenix development regulations, the Site will retain the 100-year, 2-hr storm runoff volume in surface or underground storage facilities.

9b. Water and Wastewater

WATER

City of Phoenix (City) will be the potable water service provider for the Site. According to City of Phoenix representatives, the City can provide service to the area. There are existing distribution mains near the Site that will provide water service. There are existing 12-inch water distribution mains along Pinnacle Peak Road, 7th Ave and along an easement through the middle of the Site. In addition, there is an existing 12-inch water distribution main south of the Site within the Deer Valley Airport. The Site will be required to make multiple connections to these existing water mains for service. The existing and planned infrastructure combined with an internal looped water system will provide potable water and fire flow. The water system will be designed and constructed in accordance with City of Phoenix Water Services Department Design Standards.

WASTEWATER

City of Phoenix (City) will be the wastewater service provider for the Site. According to City of Phoenix representatives, the City can provide service to the area; however downstream capacity is a dynamic condition and will be evaluated on a first serve basis. There are existing wastewater collection mains near the Site that will allow for wastewater discharge. Along Pinnacle Peak Road is an existing 12-inch gravity wastewater main. In addition, there are

existing 8-inch gravity wastewater mains south of the Site within the Deer Valley Airport. Extensions from these existing wastewater collection mains will allow discharge from the Site to the City's wastewater system. The City does not guarantee sewer capacity until either the preliminary site plan approval or building permit approval stage. If there is not adequate capacity the development will be required to upsize the downstream wastewater mains as necessary. The wastewater system will be designed and constructed in accordance with City of Phoenix Water Services Department Design Standards.

9c. Roadway Infrastructure

The following roadway infrastructure improvements are required:

- The developer shall dedicate 55-feet of right-of-way and construct the south half of Pinnacle Peak Road for the full limits of the project, west of Central Avenue, per Cross Section C standards identified on the City of Phoenix Street Classification Map, as approved by the Planning and Development Department.
- The developer shall dedicate 50-feet of right-of-way and construct the south half of Pinnacle Peak Road for the full limits of the project, east of Central Avenue, per Cross Section D standards identified on the City of Phoenix Street Classification Map, as approved by the Planning and Development Department.
- The developer shall dedicate 40-feet of right-of-way and construct the east side of 7th Avenue for the full limits of the project per the City of Phoenix collector street standards, as approved by the Planning and Development Department.
- The developer shall dedicate and construct the remainder of the existing cul-de-sac at the southern end of 7th Avenue, as approved by Planning and Development Department.

10. ADDITIONAL PROVISIONS

- The developer shall submit a Traffic Impact Study (TIS) to the City for this development. No preliminary approval of plans shall be granted until the study is reviewed and approved by the City. Contact Street Transportation Department to set up a meeting to discuss requirements of the study. The TIS shall include a signal warrant analysis for the intersections of 7th Avenue and Pinnacle Peak Road, 7th Street and Pinnacle Peak Road and Central Avenue and Pinnacle Peak Road. The developer shall be responsible for and additional dedications and cost of improvements as required by the approved Traffic Impact Study.

- All designated public roadways shall meet the City of Phoenix, Storm Water Design Manual for wash crossings.
- The developer shall construct all streets within and adjacent to the development with paving, curb, gutter, sidewalk, curb ramps, streetlights, median islands, landscaping and other incidentals as per plans approved by the Planning and Development Department. All improvements shall comply with all ADA accessibility standards.
- The developer shall submit 7460 Forms to FAA and receive FAA no hazard determination or mitigations approved by FAA for both temporary (eg, construction cranes) and permanent (eg, structures) development, prior to final site plan approval as modified and approved by the Aviation and Planning and Development departments.
- The developer shall record a Notice to Prospective Purchasers of Proximity to Airport, as required by the State, prior to final site plan approval as modified and approved by the Aviation and Planning and Development Departments.
- In the event archaeological materials are encountered during construction, the developer shall immediately cease all ground-disturbing activities within a 33-foot radius of the discovery, notify the City Archaeologist, and allow time for the Archaeology Office to properly assess the materials.

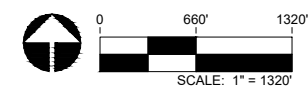
ASLD INDUSTRIAL CAMPUS
Supplier Site C
 7th Ave. & Pinnacle Peak Rd.

Figure I

Regional Context Exhibit



- 📍 PHOENIX, AZ
- 📅 2021-02-05
- 🔢 20003998
- 👤 ASLD



For illustrative purposes only. Subject to change without notice.

ASLD INDUSTRIAL CAMPUS
Supplier Site C
 7th Ave. & Pinnacle Peak Rd.

Figure 2

**Existing General Plan
 Land Use Map**

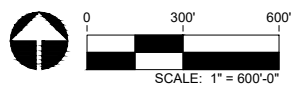
LEGEND

- 0 to 1 du/acre - Large Lot
 - 1 to 2 du/acre - Large Lot
 - 2 to 3.5 du/acre - Traditional Lot
 - 3.5 to 5 du/acre - Traditional Lot
 - 5 to 10 du/acre - Traditional Lot
 - 10 to 15 du/acre - Higher density attached townhouses, condos, or apartments
 - 15+ du/acre - Higher density attached townhouses, condos, or apartments
 - Parks/Open Space - Publicly Owned
 - Parks/Open Space - Privately Owned
 - Future Parks/Open Space or 1 du/acre
 - Mixed Use Agricultural
 - Nurseries/Flower Gardens with alternative 3.5 to 5 du/acre
 - Commercial
 - Mixed Use (MU)
 - Mixed Use (Areas C, D and Northwest Area only)
 - Industrial
 - Commerce / Business Park
 - Public/Quasi-Public
 - Floodplain
 - Undesignated Area
 - Primary Core
 - Secondary Core
 - Canal, Watercourse, Wash
 - Existing Railroad
 - Arterial and Collector Streets
 - Future Transportation
 - Light Rail
 - Laveen Conveyance Channel
 - Infrastructure Limit Line (North Black Canyon)
- NOTE:**
 Movement within large lot, traditional lot and higher density residential categories does not require a General Plan amendment

 - Proposed Park in Area
 - Proposed School in Area
 - Resort (See NOTES: below)
 - Density Cap
 - Density Cap Limit



PHOENIX, AZ
 2020-03-03
 # 20003998
 ASLD



For illustrative purposes only. Subject to change without notice.
 Copyright RVI

ASLD INDUSTRIAL CAMPUS

Supplier Site C

7th Ave. & Pinnacle Peak Rd.

Figure 3

Proposed General Plan Land Use Map

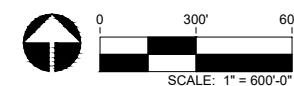
LEGEND

- | | | | | |
|--|--|--|--|---------------------------|
| | 0 to 1 du/acre - Large Lot | NOTE: Movement within large lot, traditional lot and higher density residential categories does not require a General Plan amendment | | Proposed Park in Area |
| | 1 to 2 du/acre - Large Lot | | | Proposed School in Area |
| | 2 to 3.5 du/acre - Traditional Lot | | | Resort (See NOTES: below) |
| | 3.5 to 5 du/acre - Traditional Lot | | | Density Cap |
| | 5 to 10 du/acre - Traditional Lot | | | Density Cap Limit |
| | 10 to 15 du/acre - Higher density attached townhouses, condos, or apartments | | | |
| | 15+ du/acre - Higher density attached townhouses, condos, or apartments | | | |
| | Parks/Open Space - Publicly Owned | | | |
| | Parks/Open Space - Privately Owned | | | |
| | Future Parks/Open Space or 1 du/acre | | | |
| | Mixed Use Agricultural | | | |
| | Nurseries/Flower Gardens with alternative 3.5 to 5 du/acre | | | |
| | Commercial | | | |
| | Mixed Use (MU) | | | |
| | Mixed Use (Areas C, D and Northwest Area only) | | | |
| | Industrial | | | |
| | Commerce / Business Park | | | |
| | Public/Quasi-Public | | | |
| | Floodplain | | | |
| | Undesignated Area | | | |
| | Primary Core | | | |
| | Secondary Core | | | |
| | Canal, Watercourse, Wash | | | |
| | Existing Railroad | | | |
| | Arterial and Collector Streets | | | |
| | Future Transportation | | | |
| | Light Rail | | | |
| | Laveen Conveyance Channel | | | |
| | Infrastructure Limit Line (North Black Canyon) | | | |



DEER VALLEY AIRPORT

- PHOENIX, AZ
- 2020-03-03
- 20003998
- ASLD



For illustrative purposes only. Subject to change without notice.

ASLD INDUSTRIAL CAMPUS

Supplier Site C

7th Ave. & Pinnacle Peak Rd.

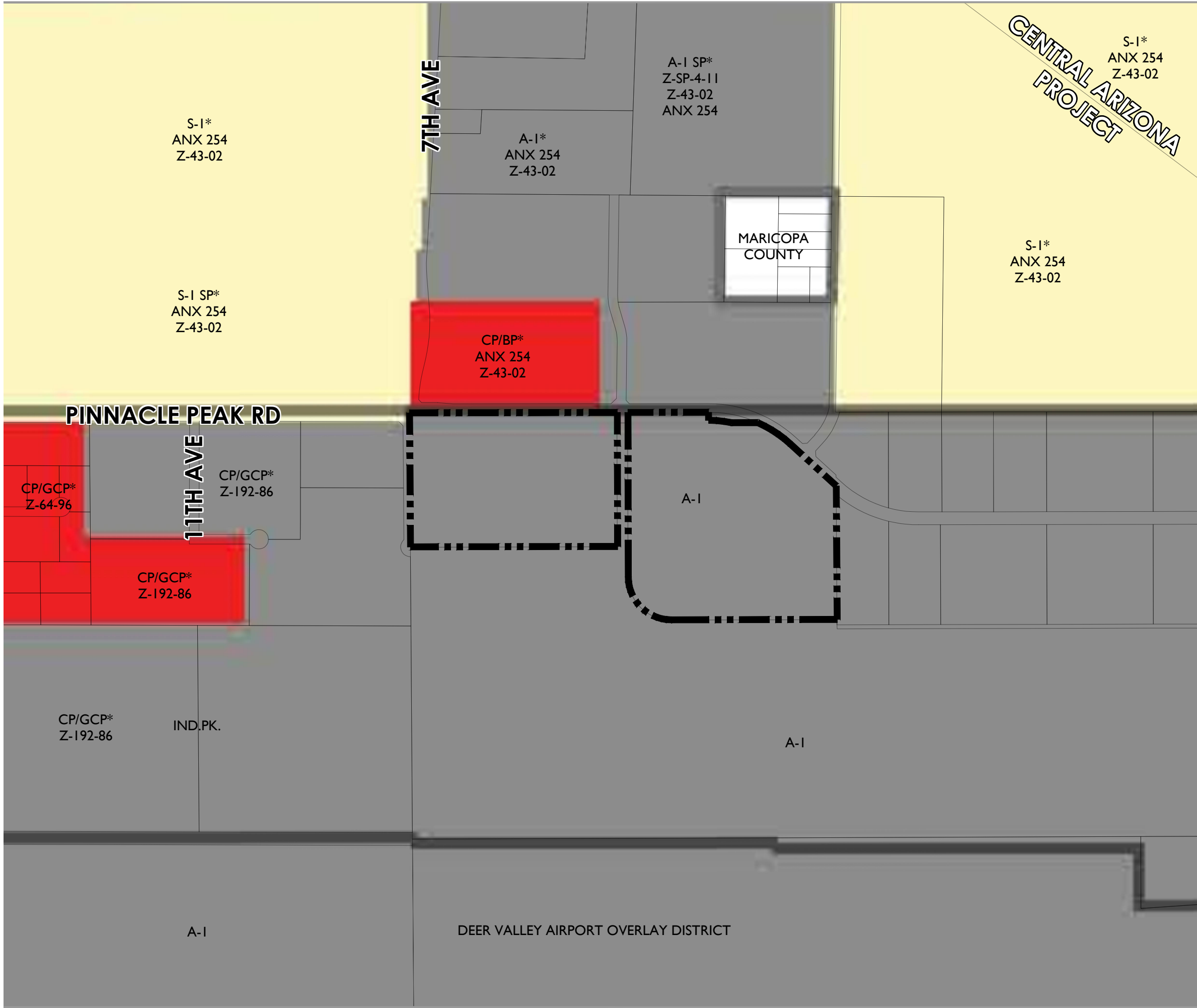
Figure 4

Existing Zoning Map

SOURCE: CITY OF PHOENIX ZONING INDEX MAP REVISED JULY 2017 & CITY OF PHOENIX GENERALIZED ZONING MAP REVISED NOVEMBER 2017

LEGEND

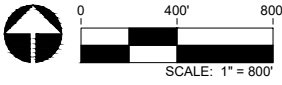
-  S-I DISTRICT
-  COMMERCIAL
-  INDUSTRIAL



B | F | S | O
BERGIN, FRAKES, SMALLEY & OBERHOLTZER



PHOENIX, AZ
2020-03-03
20003998
ASLD



For illustrative purposes only. Subject to change without notice. Copyright RVI

ASLD INDUSTRIAL CAMPUS

Supplier Site C

7th Ave. & Pinnacle Peak Rd.

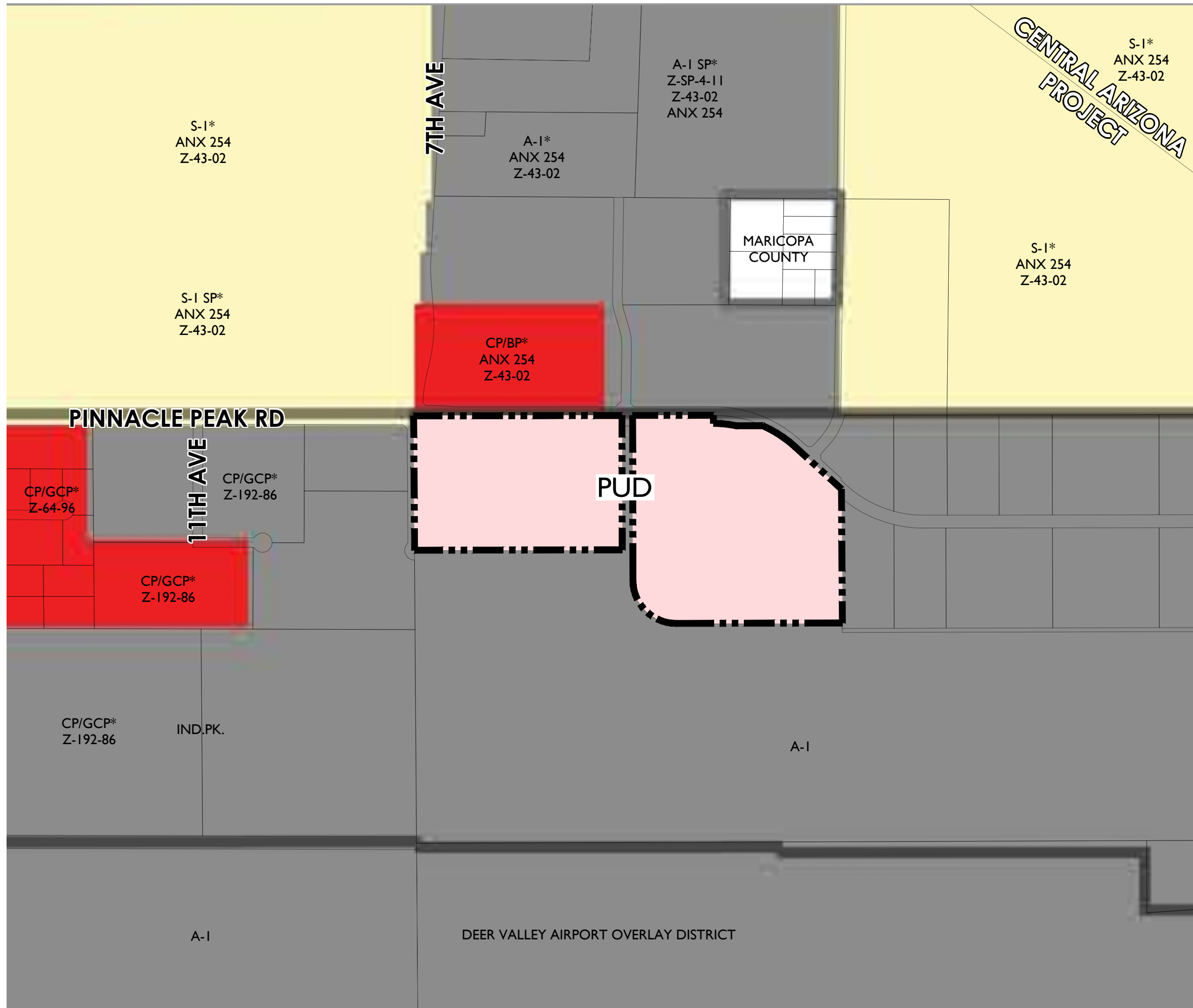
Figure 5

Proposed Zoning Map

SOURCE: CITY OF PHOENIX ZONING INDEX MAP REVISED JULY 2017 & CITY OF PHOENIX GENERALIZED ZONING MAP REVISED NOVEMBER 2017




LEGEND

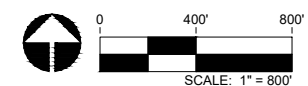
-  S-I DISTRICT
-  COMMERCIAL
-  INDUSTRIAL



B | F | S | O
BERGIN, FRAKES, SMALLEY & OBERHOLTZER



-  PHOENIX, AZ
-  2020-03-03
-  # 20003998
-  ASLD

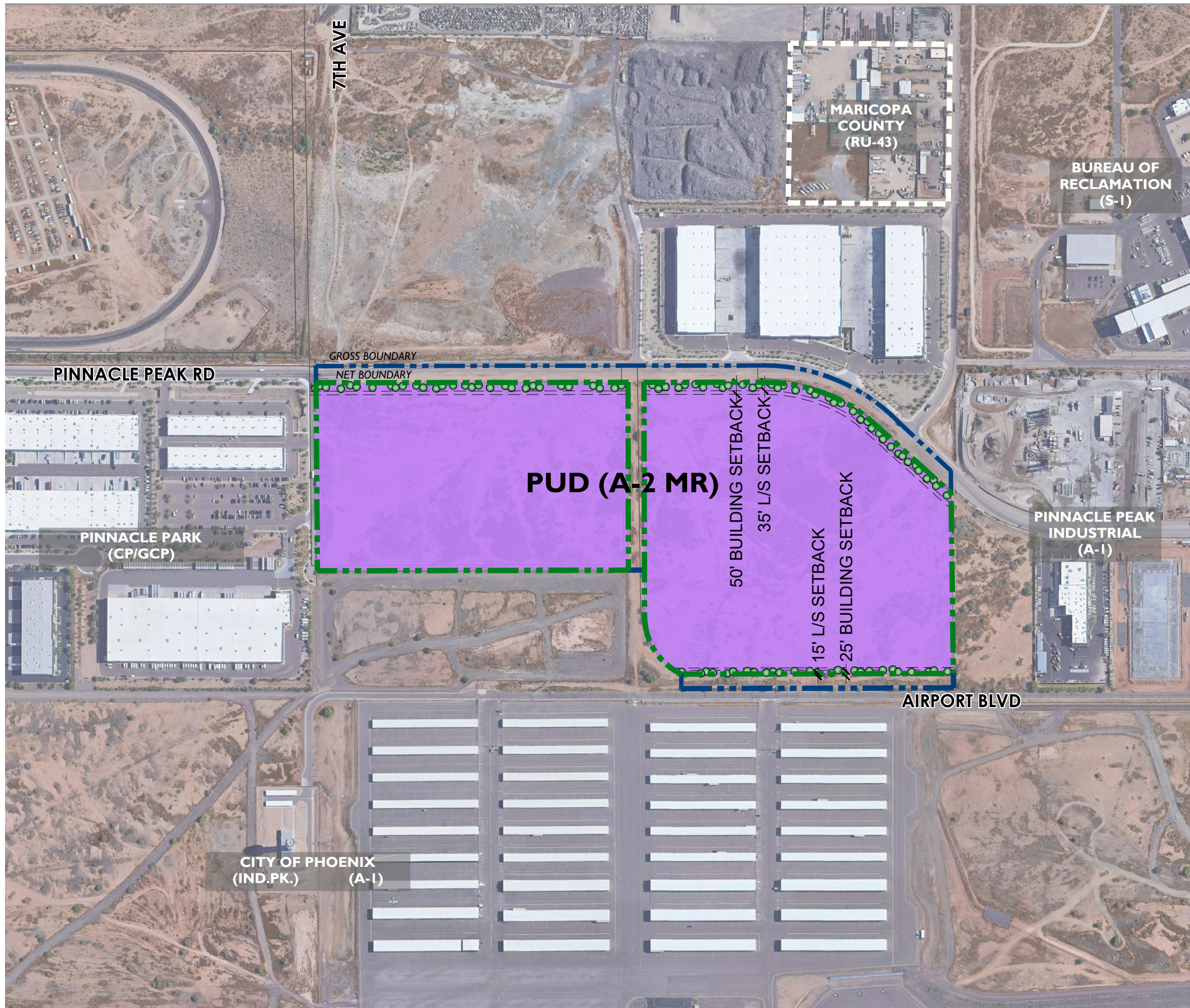


For illustrative purposes only. Subject to change without notice.

ASLD INDUSTRIAL CAMPUS
Supplier Site C
7th Ave. & Pinnacle Peak Rd.

Figure 6

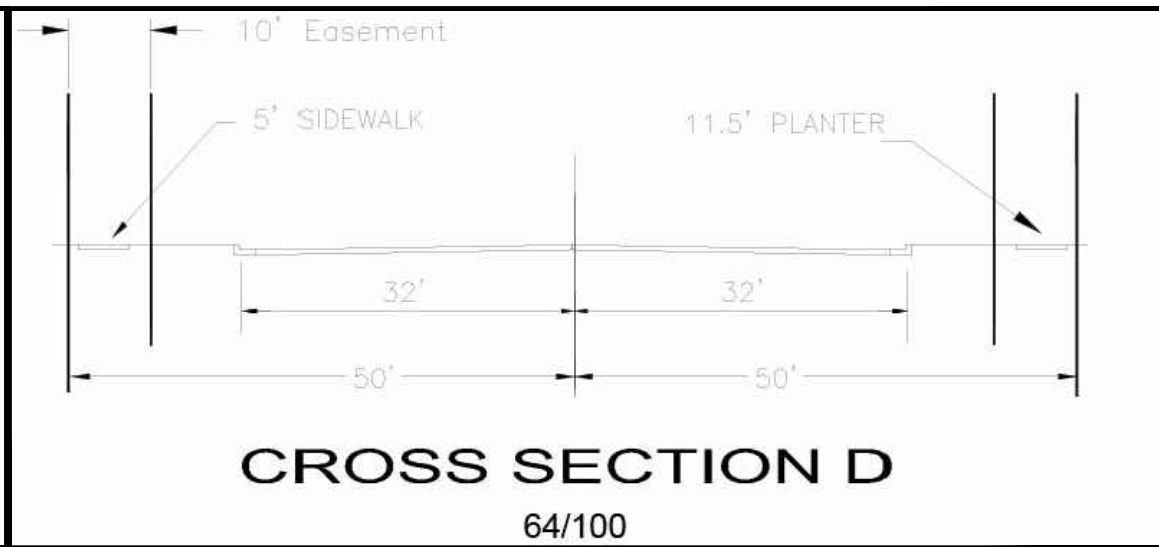
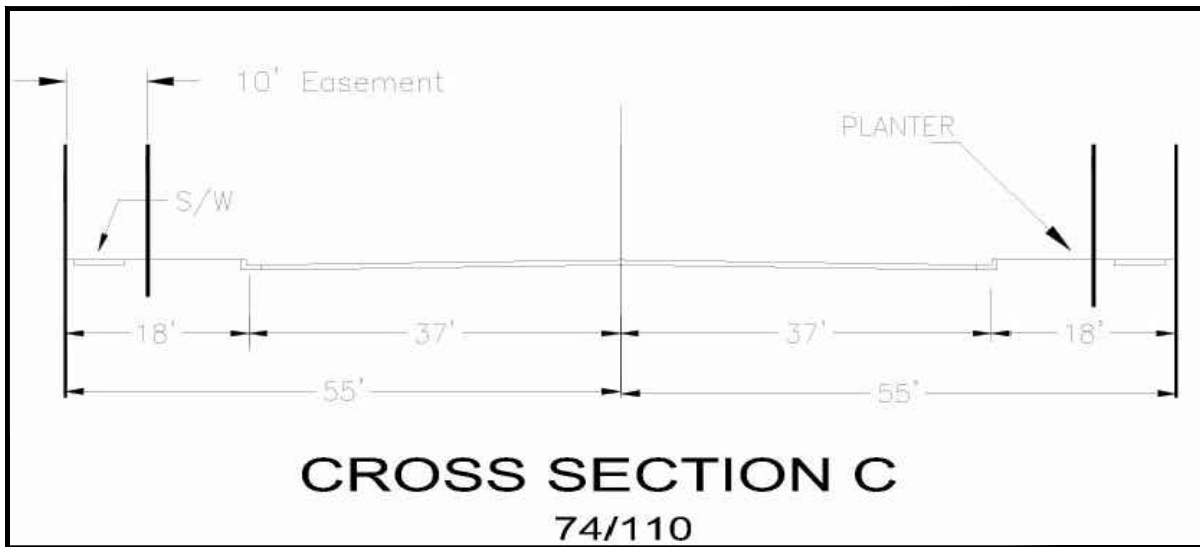
**Conceptual
Development Plan**



PHOENIX, AZ
2020-03-03
20003998
ASLD



For illustrative purposes only. Subject to change without notice.



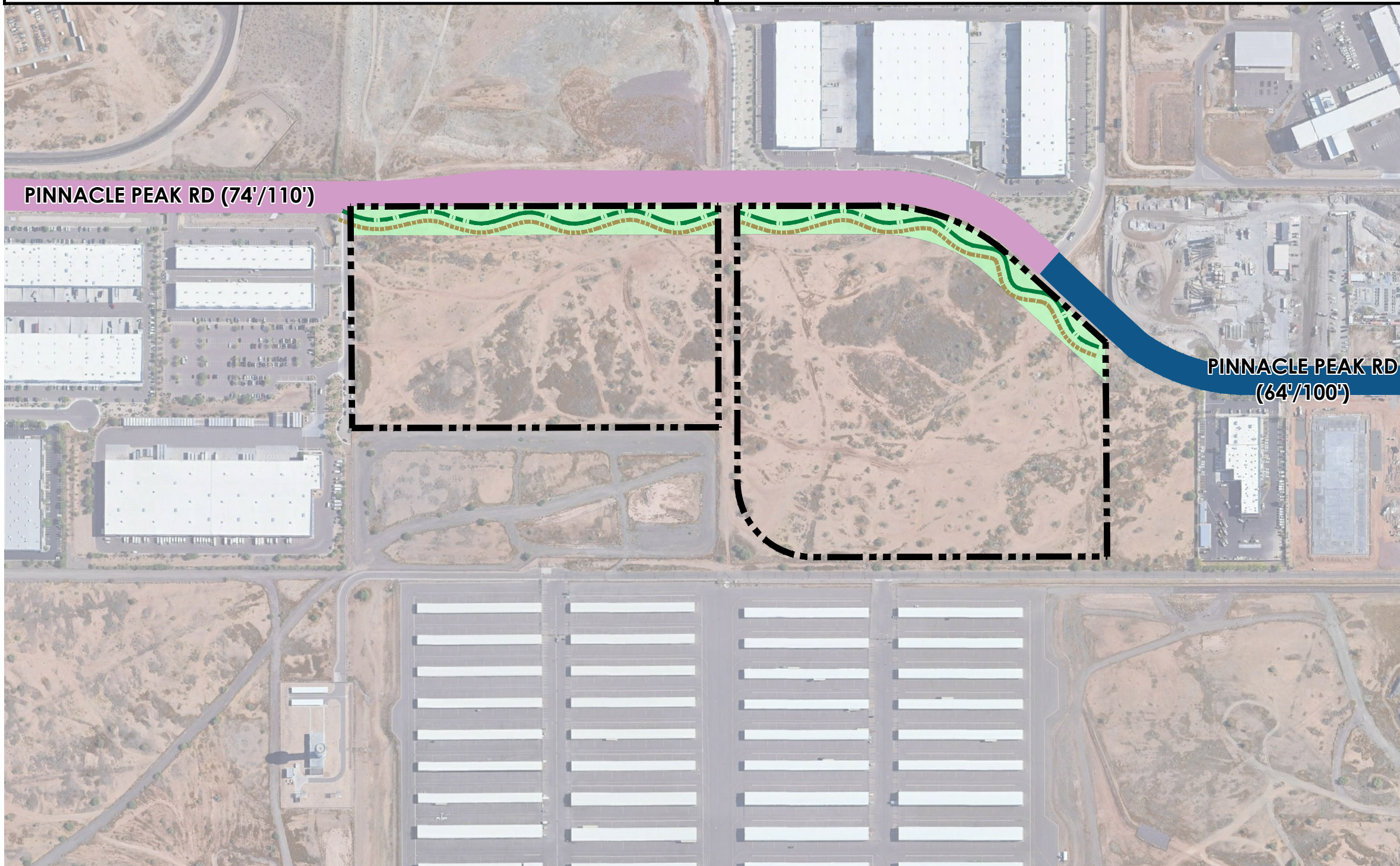
ASLD INDUSTRIAL CAMPUS
Supplier Site C
7th Ave. & Pinnacle Peak Rd.

Figure 7

City of Phoenix Street Classification and Arterial Streetscape Exhibit

LEGEND

- 6' DETACHED MEANDERING SIDEWALK WITH SHADE TREES ON BOTH SIDES
- DETACHED MEANDERING MULTI-USE TRAIL PER CITY OF PHOENIX MUT STANDARDS
- CITY OF PHOENIX STREET CROSS SECTION C
- CITY OF PHOENIX STREET CROSS SECTION D



SOURCE: CITY OF PHOENIX STREET CLASSIFICATION MAP MARCH 19, 2014



PHOENIX, AZ
2020-03-03
20003998
ASLD



For illustrative purposes only. Subject to change without notice.

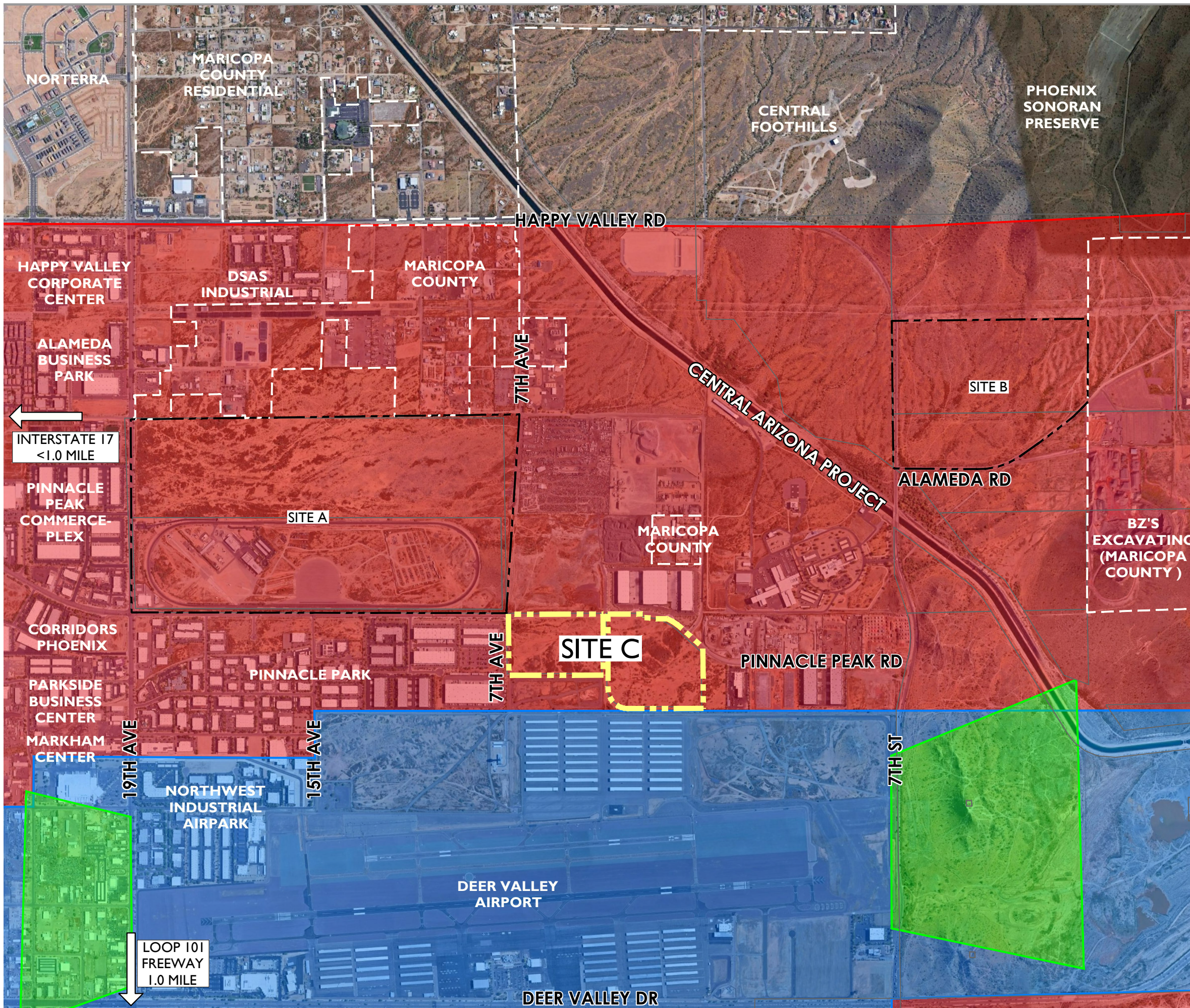
ASLD INDUSTRIAL CAMPUS
Supplier Site C
 7th Ave. & Pinnacle Peak Rd.

Figure 8

Deer Valley Airport Overlay

LEGEND

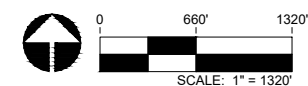
- AREA 1
- AREA 2
- AREA 3



SOURCE: CITY OF PHOENIX ZONING
 MAP NO. 1116 (11/2006)



- PHOENIX, AZ
- 2021-02-05
- # 20003998
- ASLD



For illustrative purposes only. Subject to change without notice.

APPENDIX A: LEGAL DESCRIPTION

Wood, Patel & Associates, Inc.
602.335.8500
www.woodpatel.com

February 3, 2021
WP# 205193.02
Page 1 of 4
See Exhibit "A"

LEGAL DESCRIPTION
Supplier Site C
Zoning Limits – ASLD Property

A parcel of land lying within the northwest quarter of Section 17, Township 4 North, Range 3 East, of the Gila and Salt River Meridian, Maricopa County, Arizona, more particularly described as follows:

BEGINNING at the northwest corner of said Section 17, a 3-inch Maricopa County (MC) brass cap 0.4' down stamped T4N R3E S7 S8 S18 S17 LS 33307 2004, from which the north quarter corner of said section, a 2-inch Maricopa County aluminum cap 0.9' down stamped T4N R3E S8 1/4 S17 LS 33307 2004, bears North 89°53'01" East (basis of bearing), a distance of 2645.71 feet;

THENCE along the north line of said section, North 89°53'01" East, a distance of 1289.85 feet, to a point on the northerly line of that certain parcel of land described in Document 1985-0391036 Maricopa County Records (MCR) and a point hereby designated as Point A for future reference in this description;

THENCE leaving said north line, along said northerly line, South 00°06'59" East, a distance of 832.06 feet;

THENCE South 89°53'01" West, a distance of 1285.66 feet, to the northwest corner of said certain parcel and the west line of said section;

THENCE leaving said northerly line, along said west line, North 00°24'17" West, a distance of 832.07 feet, to the **POINT OF BEGINNING**.

TOGETHER WITH

COMMENCING at said Point A;

THENCE along said north line and said northerly line, North 89°53'01" East, a distance of 66.00 feet, to a point on the northerly line of said certain parcel and the **POINT OF BEGINNING**;

THENCE leaving said northerly line, continuing along said north line, North 89°53'01" East, a distance of 500.36 feet, to the northwest corner of that certain parcel of land described in Document 2008-0563957, MCR;

THENCE leaving said north line, along the west line of said certain parcel, South 00°06'59" East, a distance of 50.00 feet, to the southwest corner of said certain parcel and a point of intersection with a non-tangent curve;

THENCE leaving said west line, along the southerly line of said certain parcel, easterly along said non-tangent curve to the right, having a radius of 700.00 feet, concave southerly, whose radius bears South 00°06'59" East, through a central angle of 11°52'57", a distance of 145.17 feet, to the south line of the north 65-feet of said section and a point of intersection with a non-tangent line;

**Legal Description
Supplier Site C
Zoning Limits – ASLD Property**

February 3, 2021
WP# 205193.02
Page 2 of 4
See Exhibit "A"

THENCE leaving said southerly line, along said south line, North 89°53'01" East, a distance of 161.27 feet, to the centerline of Pinnacle Peak Road, recorded in Book 1037, page 21, MCR and a point of intersection with a non-tangent curve;

THENCE leaving said south line, along said centerline, southeasterly along said non-tangent curve to the right, having a radius of 750.00 feet, concave southwesterly, whose radius bears South 23°54'49" West, through a central angle of 18°30'28", a distance of 242.27 feet, to the curves end;

THENCE continuing along said centerline and along the centerline of Pinnacle Peak Road, recorded in Book 1016, page 23, MCR, South 47°34'43" East, a distance of 386.60 feet, to the north-south mid-section line of said section;

THENCE leaving said centerline, along said mid-section line, South 00°25'04" East, a distance of 829.34 feet, to said northerly line;

THENCE leaving said mid-section line, along said northerly line, South 89°51'47" West, a distance of 1029.54 feet, to the beginning of a curve;

THENCE northwesterly along said curve to the right, having a radius of 267.00 feet, concave northeasterly, through a central angle of 90°01'14", a distance of 419.50 feet, to the curves end;

THENCE North 00°06'59" West, a distance of 1021.44 feet, to the **POINT OF BEGINNING**.

Containing 2,586,089 square feet or 59.3684 acres, more or less.

Subject to existing right-of-ways and easements.

This Legal description was prepared without the benefit of survey fieldwork and is based on the Record of Survey of PLSS Subdivision Maricopa County Geodetic Densification and Cadastral Survey recorded in Book 704, page 32, Maricopa County Records and other client provided information. Any monumentation noted in this parcel description is based on said Record of Survey.

Y:\WP\Parcel Descriptions\2020\205193.02 Supplier Site C Zoning Limits ASLD Property L09 02-03-21.docx



EXPIRES 06-30-23

NORTHWEST CORNER
SECTION 17, T4N, R3E
3" MARICOPA COUNTY BRASS CAP
0.4' DOWN STAMPED T4N R3E S7 S8 S18 S17
LS 33307 2004
POB

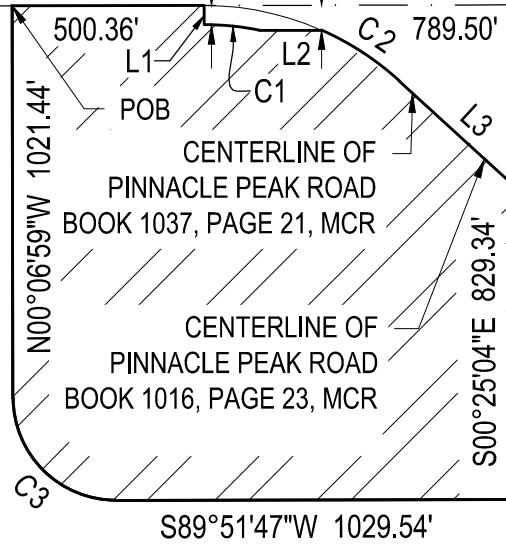
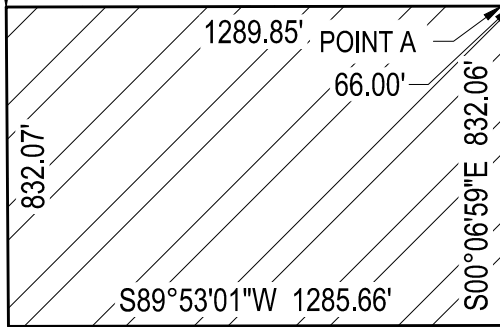
NORTH 1/4 CORNER
SECTION 17, T4N, R3E
2" MARICOPA COUNTY ALUMINUM
CAP 0.9' DOWN STAMPED T4N
R3E S8 1/4 S17 LS 33307 2004

DOC 2008-0563957, MCR

PINNACLE PEAK ROAD
(BASIS OF BEARING) N89°53'01"E 2645.71'

7TH AVENUE

N00°24'17"W 2646.10'



CENTERLINE OF
PINNACLE PEAK ROAD
BOOK 1037, PAGE 21, MCR

CENTERLINE OF
PINNACLE PEAK ROAD
BOOK 1016, PAGE 23, MCR

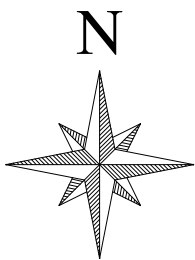
CENTRAL AVENUE (ALIGNMENT)

DOC 1985-0391036, MCR

1814.03'

WEST 1/4 CORNER SECTION 17, T4N, R3E
CITY OF PHOENIX BRASS CAP
0.3' DOWN STAMPED 1/4 S18 S17 1970

CENTER SECTION 17, T4N, R3E



EXPIRES 06-30-23

EXHIBIT "A"
SUPPLIER SITE C
ZONING LIMITS ASLD PROPERTY
02/03/2021
WP# 205193.02
PAGE 3 OF 4
NOT TO SCALE

Z:\2020\205193\Survey\Legal\5193-L09.dwg

| LINE TABLE | | |
|------------|-------------|----------|
| LINE | BEARING | DISTANCE |
| L1 | S00°06'59"E | 50.00' |
| L2 | N89°53'01"E | 161.27' |
| L3 | S47°34'43"E | 386.60' |

| CURVE TABLE | | | |
|-------------|-----------|---------|---------|
| CURVE | DELTA | RADIUS | ARC |
| C1 | 11°52'57" | 700.00' | 145.17' |
| C2 | 18°30'28" | 750.00' | 242.27' |
| C3 | 90°01'14" | 267.00' | 419.50' |



EXPIRES 06-30-23

EXHIBIT "A"
 SUPPLIER SITE C
 ZONING LIMITS ASLD PROPERTY
 02/03/2021
 WP# 205193.02
 PAGE 4 OF 4
 NOT TO SCALE

Z:\2020\205193\Survey\Legal\5193-L09.dwg

APPENDIX B: COMPARATIVE DEVELOPMENT STANDARDS TABLE

| Table 2: Development Standards | | | |
|---------------------------------------|--|---|---|
| | <i>A-2 District Development Standards</i> | <i>MR District Development Standards</i> | <i>Proposed ASLD Supplier Site A Development Standards</i> |
| Building Height: | Fifty-six-foot (56) maximum height; up to eighty (80) feet allowable with a use permit with a specific plan of development. Requests to exceed this limit for a warehouse up to a maximum height of one hundred ten (110) feet may be granted by the City Council upon recommendation from the Planning Commission in accordance with the standards and procedures of Section 506 and upon a finding that such additional height is not detrimental to adjacent property or the public welfare in general. | No building shall exceed a height of one hundred ninety (190) feet. | Eighty (80) foot maximum height. In addition to the building height exceptions outlined in the Zoning Ordinance (Section 701.B), non-habitable mechanical equipment and structures that may include, but are not limited to, elements such as air separators, exhaust pipes, storage tanks, and gas processing equipment are permitted up to one hundred fifty (150) feet in height. |
| Open Space: | n/a | For any site development in excess of fifty-six (56) feet: A minimum of thirty (30%) percent of a project's total net area shall be open space with appropriate landscaping and other pedestrian-oriented amenities. This area shall be exclusive of setbacks, areas open to vehicular traffic and parking areas. | For any property development in excess of fifty-six (56) feet: A minimum of ten (10%) percent of the parcel's total net area shall be open space with appropriate landscaping and other employee-oriented amenities as identified within Section 7:Design Guidelines. |

Table 2: Development Standards (Continued)

| | <i>A-2 District Development Standards</i> | <i>MR District Development Standards</i> | <i>Proposed ASLD Supplier Site A Development Standards</i> |
|---------------------------------|--|---|--|
| Setback Requirements | | | |
| <i>Front yard requirements:</i> | Section 701.D.3 shall apply to yards on an arterial or collector street, adjacent to a canal right-of-way, and when any yard on a public street is on a block where either side of the street contains residential zoning. | For any site development not exceeding four (4) stories or fifty-six (56) feet, the yard and area requirements set forth in the district with which the M-R district is combined shall control. For any Site development in excess of four (4) stories or fifty-six (56) feet: There shall be a front yard having a depth as provided in Section 701 D. | <p>Building & landscape setback adjacent to collector and arterial streets: Min. fifty (50) feet.</p> <p>Building & landscape setback adjacent to non-collector and non-arterial streets: Min. twenty (20) feet.</p> |
| <i>Side yard requirements:</i> | For side and rear yards there shall be a thirty (30) foot setback where adjacent to a residential district for closed buildings and one hundred fifty feet for open buildings or use. | For any Site development in excess of four (4) stories or fifty-six (56) feet: There shall be a side yards having a width as provided in section 701.D, subject to the exceptions provided in Section 701.A.3. | <p>Building & landscape setback adjacent to collector and arterial streets: Min. fifty (50) feet.</p> <p>Building & landscape setback adjacent to non-collector and non-arterial streets: Min. twenty (20) feet.</p> <p>Building and landscape setback not adjacent to streets: Min. zero (0) feet.</p> |
| <i>Rear yard requirements:</i> | n/a | For any Site development in excess of four (4) stories or fifty-six (56) feet: There shall be a rear yard having a depth as provided in Section 701.D. | <p>Building & landscape setback adjacent to non-collector and non-arterial streets: Min. twenty (20) feet.</p> <p>Building and landscape setback not adjacent to streets: Min. zero (0) feet.</p> |

Table 2: Development Standards (Continued)

| | <i>A-2 District Development Standards</i> | <i>MR District Development Standards</i> | <i>Proposed ASLD Supplier Site A Development Standards</i> |
|--|---|--|---|
| Screening | | | |
| <i>Screening for Parking or Loading and Unloading Areas where within one hundred fifty (150) feet of a Residence District:</i> | For employee and customer parking a four (4) to six (6) foot wall or landscaped berm is required. The wall may be three (3) feet high if the parking area is located in a yard as specified in Section 628.E.2.b(1). | n/a | Per A-2 Code - For employee and customer parking a four (4) to six (6) foot wall or landscaped berm is required. The wall may be three (3) feet high if the parking area is located in a yard as specified in Section 628.E.2.b(1). |
| | In areas used for truck parking, loading or unloading, an eight (8) foot high wall is required. | n/a | Per A-2 Code - In areas used for truck parking, loading or unloading, an eight (8) foot high wall is required. |
| <i>Screening for Open Storage Use:</i> | Any outside storage or use within one hundred (100) feet of a residential district or any public street shall be screened by a six (6) foot high solid fence or wall. | n/a | Per A-2 Code - Any outside storage or use within one hundred (100) feet of a residential district or any public street shall be screened by a six (6) foot high solid fence or wall. |
| | Height of Open Storage: Open storage shall be no higher than six (6) feet plus one (1) foot in height for every additional three (3) feet of setback from a property line. If the storage area is within one hundred fifty (150) feet of a public street, screening in the addition to the required six (6) foot high solid fence or wall shall include fifteen (15) gallon trees spaced no more than twenty-five (25) feet apart and with an adequate watering system. | n/a | Per A-2 Code - Height of Open Storage: Open storage shall be no higher than six (6) feet plus one (1) foot in height for every additional three (3) feet of setback from a property line. If the storage area is within one hundred fifty (150) feet of a public street, screening in the addition to the required six (6) foot high solid fence or wall shall include fifteen (15) gallon trees spaced no more than twenty-five (25) feet apart and with an adequate watering system. |

Table 2: Development Standards (Continued)

| | <i>A-2 District Development Standards</i> | <i>MR District Development Standards</i> | <i>Proposed ASLD Supplier Site A Development Standards</i> |
|--|---|---|--|
| <i>Screening for Open Storage Use:</i> | Except for vehicle parking areas, no outdoor uses, outdoor storage, or open buildings shall be within seventy-five feet of a public street. | n/a | Per A-2 Code - Except for vehicle parking areas, no outdoor uses, outdoor storage, or open buildings shall be within seventy-five feet of a public street. |
| <i>Screening for Surface Parking</i> | n/a | For any site development in excess of fifty-six (56) feet: all surface parking must be buffered by landscaping regardless of whether located in side yards or rear yards. | Per MR Code - For any site development in excess of fifty-six (56) feet: all surface parking must be buffered by landscaping regardless of whether located in side yards or rear yards. |