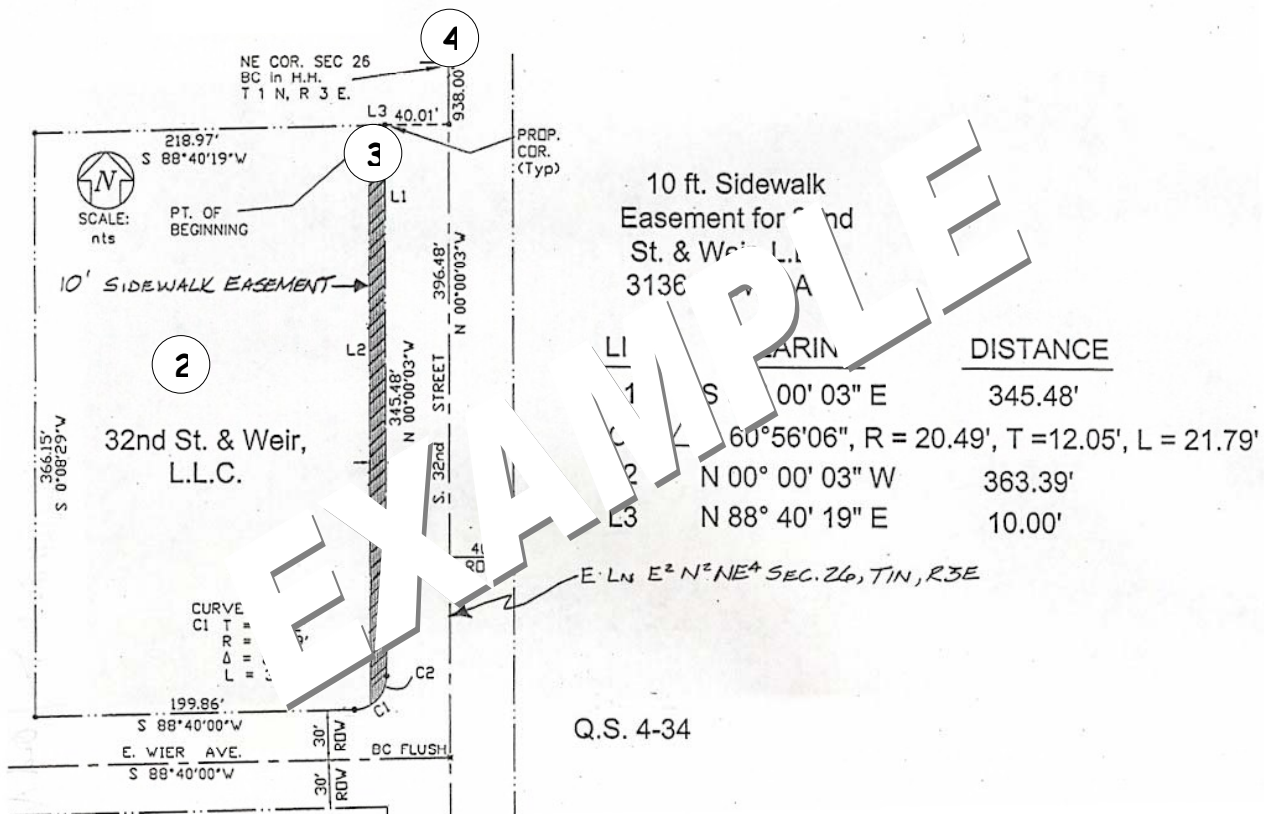




# DEDICATION BY APPLICATION DRAWING – EXAMPLE

The following drawing is provided to serve as an example of the type of drawing required as part of your request to dedicate rights-of-way and/or easements to the City of Phoenix. For additional information, contact the Development Services Department, 200 W. Washington, 2nd Floor, or call (602) 495-0156 or Fax (602) 495-7160. This publication can be made available in alternate formats (Braille, large print, computer diskette, or audiotape) upon request. Contact the DSD at (602) 262-7811 (voice) or (602) 534-5500 (TTY).



When easements/rights-of-way widths vary, care should be taken to clearly show or describe the location on drawings. **Public fire hydrants and metered water services must be contained within easements.**

Your drawing package should illustrate the following requirements:

1. Metes and Bounds – Legal descriptions and Exhibits must be signed and sealed by a registered Land Surveyor (R.L.S.) or Civil Engineer licensed to do work in the State of Arizona.
2. Legal Description of “Property(ies) Affected” by the area to be conveyed.
3. Legal description of the “Area to Be Conveyed”.
4. Easement/right-of-way location tied to an existing city survey monument at a street intersection and referenced from nearest section corner. Ties should be by bearing and distance and shown on the drawing.