

Development Services

Mission Statement

Quality Development through Quality Service

Key Services

Construction plan review, building and civil permitting, construction inspections

Major Commercial Building Plans

Target: 60 days

YTD Average: 42

Goal:

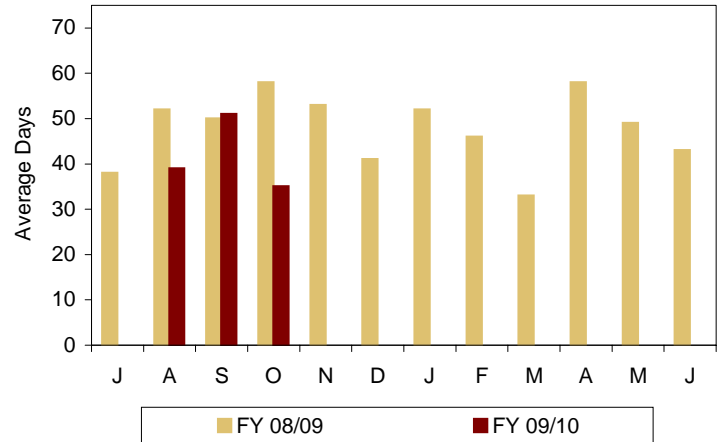
Meet plan review turnaround times - major commercial

Target:

60 days for 1st review

Significance:

Indicates efficiency of plan review process and customer service.



Medium Commercial Building Plans

Target: 45 days

YTD Average: 29

Goal:

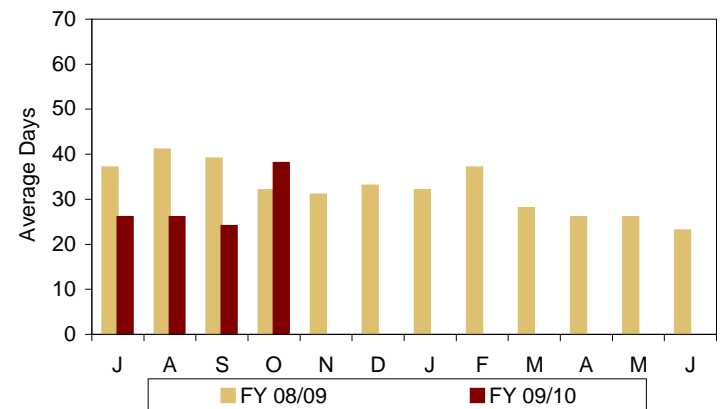
Meet plan review turnaround times - medium commercial

Target:

45 Days for 1st review

Significance:

Indicates efficiency of plan review process and customer service.



Visit us on the Web @ phoenix.gov

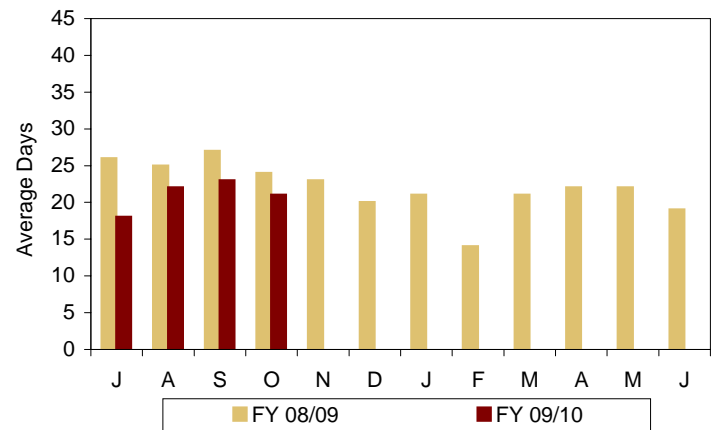
Minor Commercial Building Plans

Target: 30 days	YTD Average: 21
------------------------	------------------------

Goal:
Meet plan review turnaround times - minor commercial

Target:
30 days for 1st review

Significance:
Indicates efficiency of plan review process and customer service.



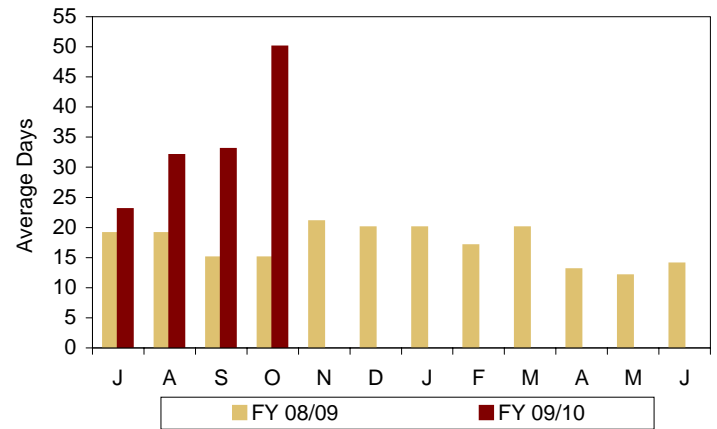
Residential Building Plans

Target: 30 days	YTD Average: 35
------------------------	------------------------

Goal:
Meet plan review turnaround times - residential

Target:
30 days for 1st review

Significance:
Indicates efficiency of plan review process and customer service.



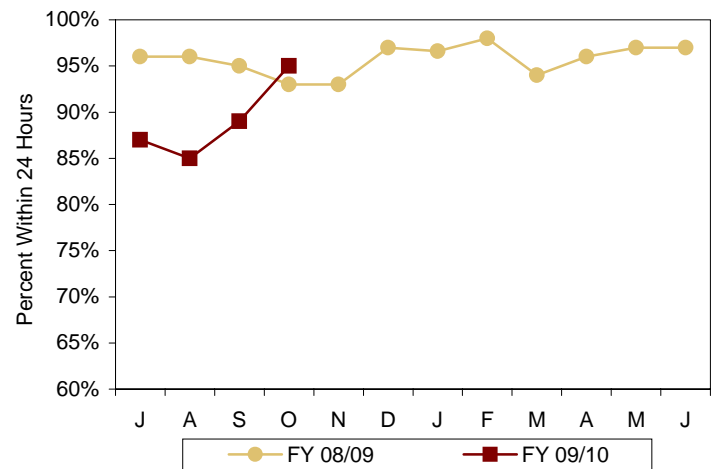
On Time Commercial Inspections

Target: 90%	YTD Percent: 89%
--------------------	-------------------------

Goal:
Minimize commercial inspection carryovers by completing inspections within target

Target:
90% conducted within 24 hours

Significance:
Indicates efficiency of inspection process and customer service.



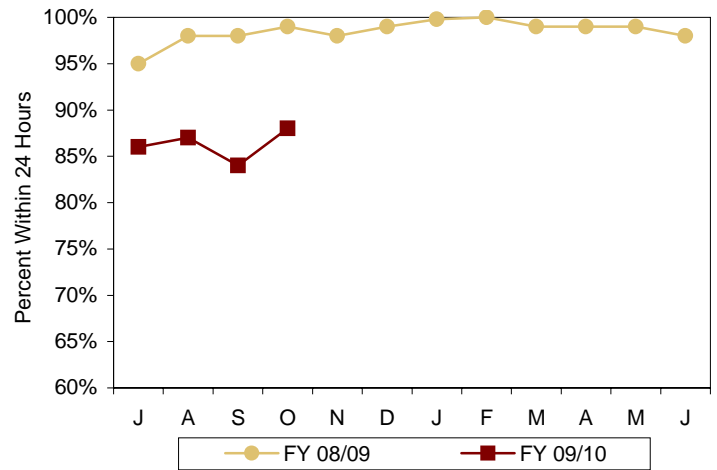
On Time Residential Inspections

Target: 90% **YTD Percent: 86%**

Goal:
Minimize residential inspection carryovers by completing inspections within target

Target:
90% conducted within 24 hours

Significance:
Indicates efficiency of inspection process and customer service.



Cost Recovery

Target: 100% **YTD Percent: 80%**

Goal:
Meet cost recovery goal

Target:
100% cost recovery

Significance:
Department must be 100% cost recovery and is not supported by the General Fund.

