

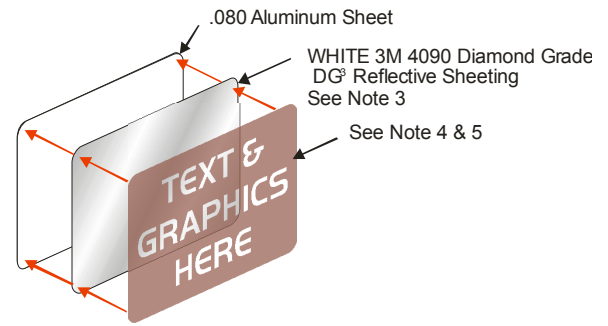
# FIGURE 1020.1.6



1.25" (1/4") LETTERING, 1/4" STROKE  
 1" LETTERING, 3/16" STROKE  
 5" LETTERING, 7/8" STROKE  
 1" LETTERING, 3/16" STROKE  
 1" LETTERING, 3/16" STROKE  
 NUMBERS SHALL BE RAISED A MINIMUM OF 1/32", UPPER CASE, SANS SERIF TYPE FONT.

BRILLE SHALL BE GRADE 2 TYPE, INDICATING STAIRWELL LOCATION AND FLOOR NUMBER.  
 (EXAMPLE: N.W. STAIRWELL FLOOR 20)

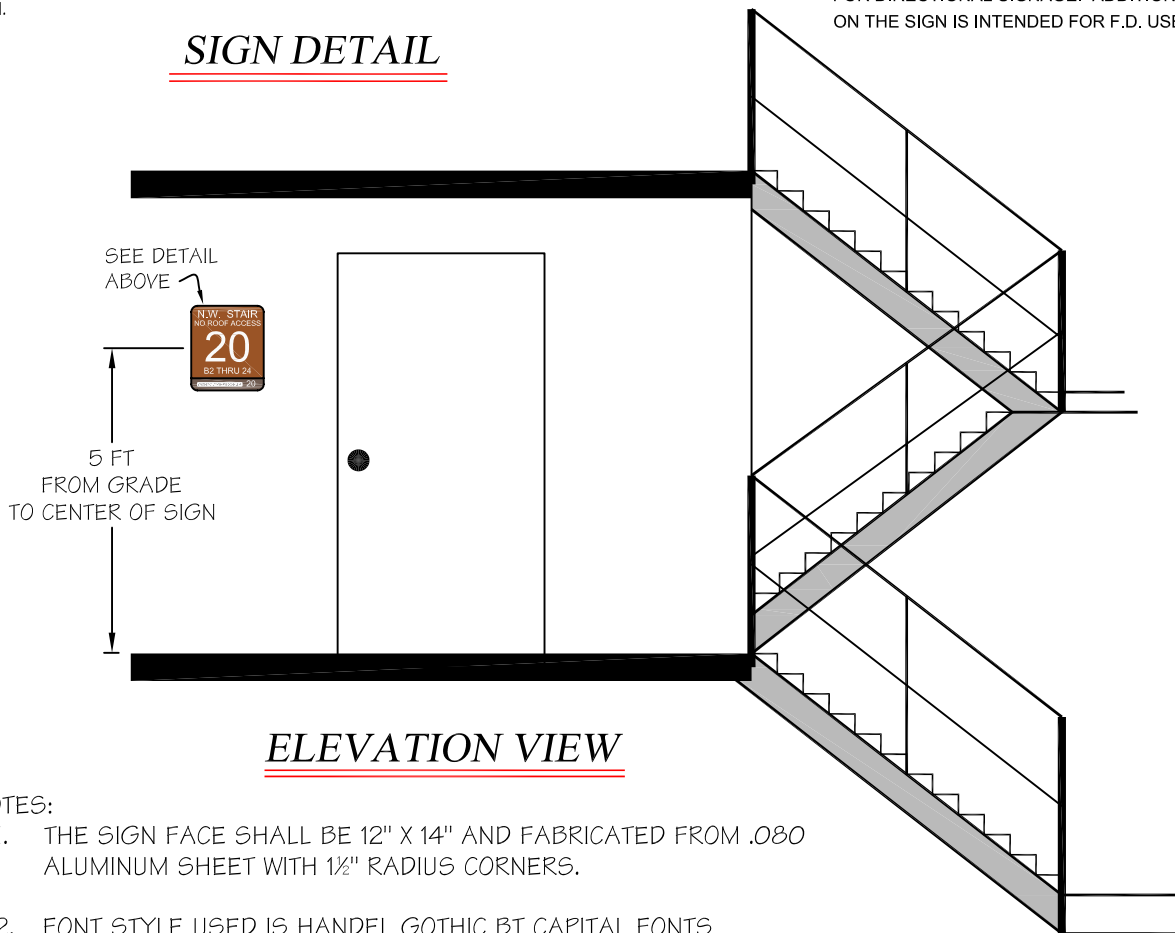
THE BRILLE AND RAISE NUMBERS SHALL BE PLACED NO MORE THAN 2" APART AND SHALL BE CENTERED ON THE SIGN.



### ADA DISCLAIMER

THE INFORMATION PROVIDED ON THE BOTTOM 2" PORTION OF THIS SIGN IS ONLY INTENDED TO AID PEOPLE WITH VISUAL IMPAIRMENTS EXITING THE BUILDING. THE BRILLE AND RAISED #'S INDICATING STAIRWELL LOCATION AND FLOOR # MEETS ADA REQUIREMENTS FOR DIRECTIONAL SIGNAGE. ADDITIONAL INFORMATION DISPLAYED ON THE SIGN IS INTENDED FOR F.D. USE ONLY.

## SIGN DETAIL



## ELEVATION VIEW

### NOTES:

1. THE SIGN FACE SHALL BE 12" X 14" AND FABRICATED FROM .080 ALUMINUM SHEET WITH 1/2" RADIUS CORNERS.
2. FONT STYLE USED IS HANDEL GOTHIC BT CAPITAL FONTS
3. THE SIGN FACE SHALL HAVE A WHITE 3M DIAMOND GRADE REFLECTIVE SHEETING (DG<sup>3</sup> 4090 SERIES OR EQUIVALENT) APPLIED AS A BACKGROUND TO THE ALUMINUM PLATES.
4. LETTERING / GRAPHICS SHALL BE HIGH PERFORMANCE, NON-REFLECTIVE, CUTTABLE VINYL (3M 7725 SERIES) INVERSE CUT TO ALLOW WHITE REFLECTIVE BACKGROUND TO SHOW THROUGH.
5. ALL SIGN IMAGING SHALL BE IN COMPLIANCE WITH THE REFLECTIVE SHEETING MANUFACTURERS MATCH COMPONENT SYSTEM.
6. REQUIRES PRE-APPROVAL BY FIRE PREVENTION EMERGENCY ACCESS OFFICER.