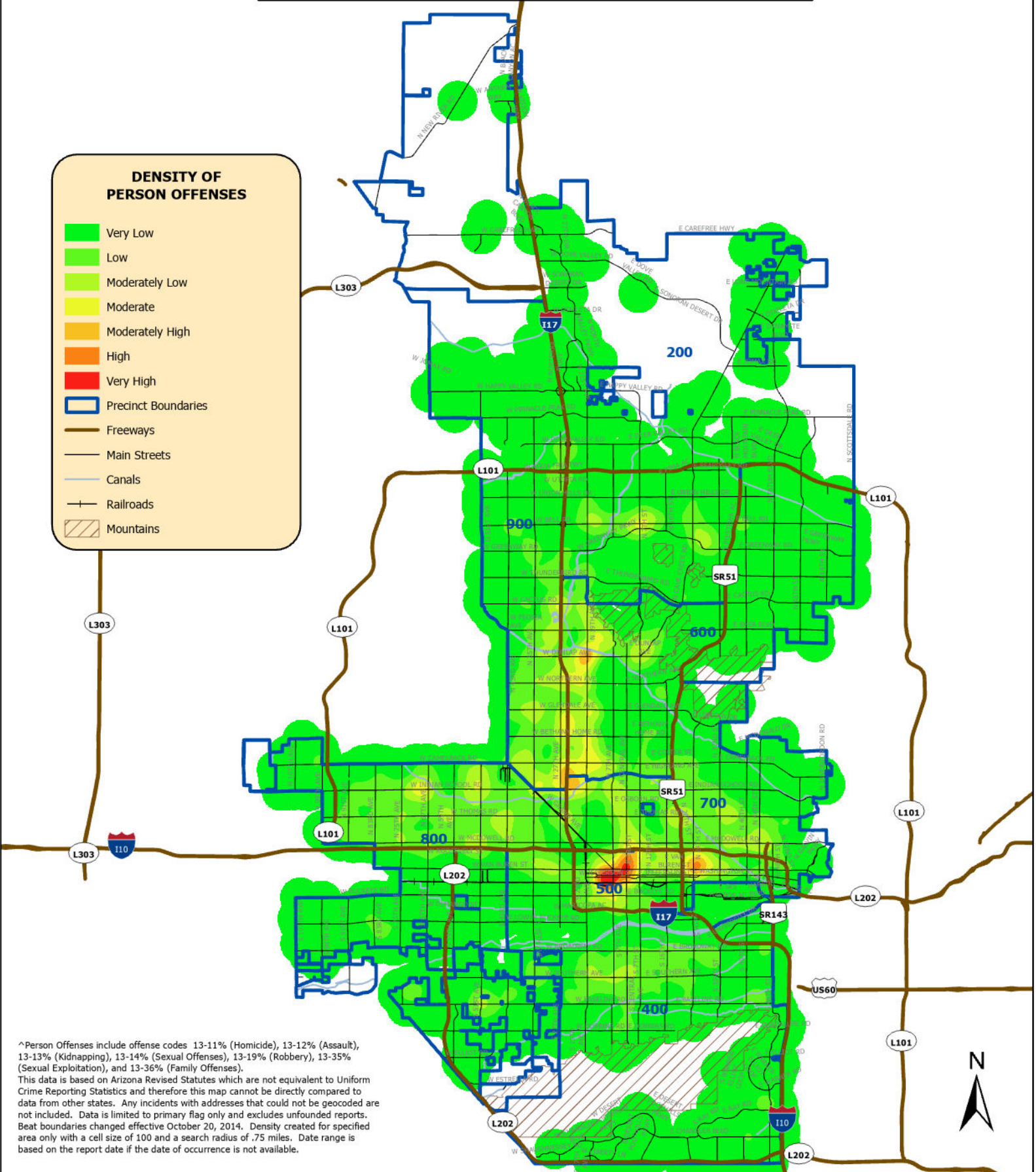


**CITY OF PHOENIX POLICE DEPARTMENT**  
**Arizona Revised Statutes (ARS) Incident Reports**  
**For Listed Person Offenses^**  
**Citywide**  
**Date Range: 1/1/23 - 3/31/23 | First Quarter (Jan-Mar)**



**DENSITY OF PERSON OFFENSES**

- Very Low
- Low
- Moderately Low
- Moderate
- Moderately High
- High
- Very High
- Precinct Boundaries
- Freeways
- Main Streets
- Canals
- Railroads
- Mountains



^Person Offenses include offense codes 13-11% (Homicide), 13-12% (Assault), 13-13% (Kidnapping), 13-14% (Sexual Offenses), 13-19% (Robbery), 13-35% (Sexual Exploitation), and 13-36% (Family Offenses). This data is based on Arizona Revised Statutes which are not equivalent to Uniform Crime Reporting Statistics and therefore this map cannot be directly compared to data from other states. Any incidents with addresses that could not be geocoded are not included. Data is limited to primary flag only and excludes unfounded reports. Beat boundaries changed effective October 20, 2014. Density created for specified area only with a cell size of 100 and a search radius of .75 miles. Date range is based on the report date if the date of occurrence is not available.