



Update on Shade Phoenix Plan & Tree and Shade Grants

Office of Heat Response & Mitigation
Synergy Conference
September 7, 2024

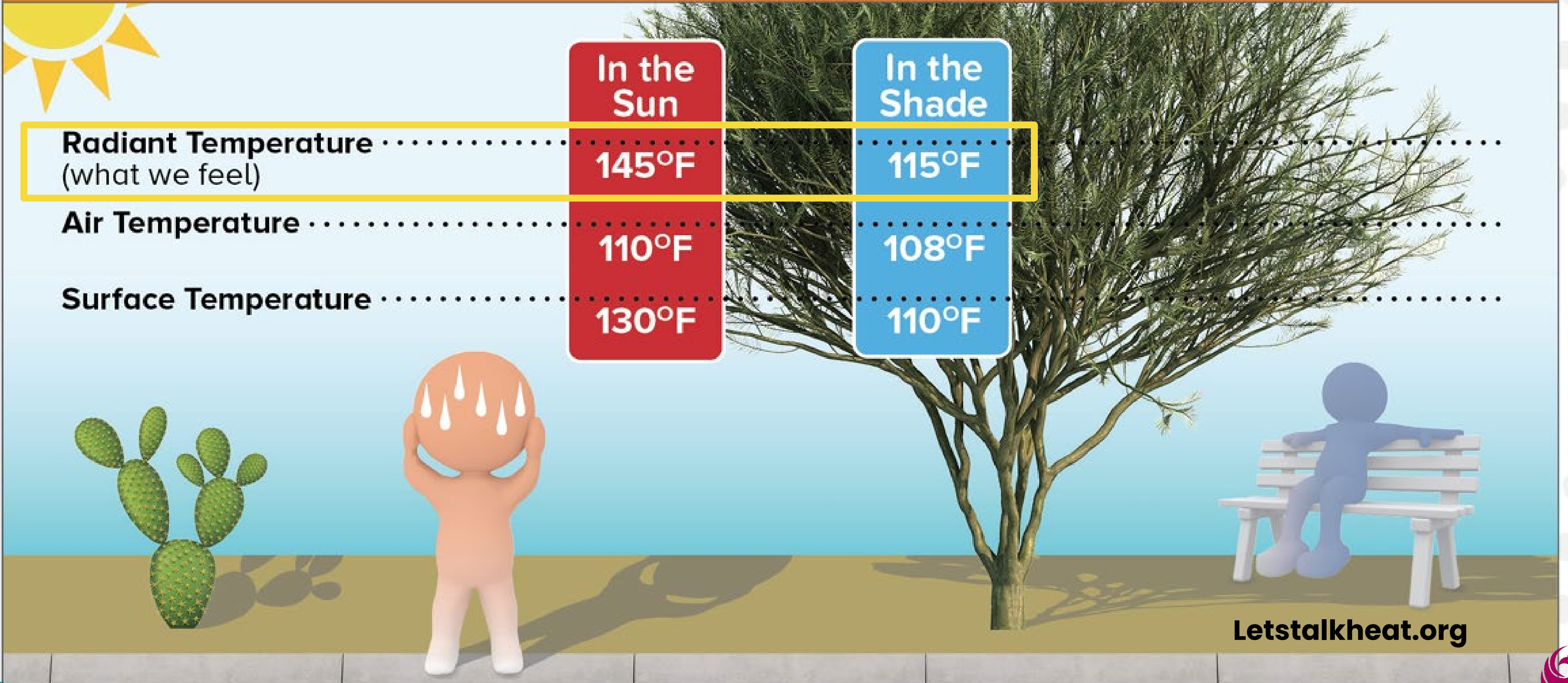
Why a new plan?

- ✓ Inform program and policy development
- ✓ Solidify operational guidance
- ✓ Catalyze stakeholder efforts
- ✓ Enhance competitiveness for funding
- ✓ Increase public accountability



The case for shade

Shade Reduces Air, Surface, and Radiant Temperatures



Letstalkheat.org



The case for shade

**Shade is an
essential solution
for hotter cities**

Nature 2023

**Shade is largely
absent from
municipal heat plans**

*Environmental Research
Letters 2022*

**Policy and
infrastructure
changes are urgently
needed to protect
mental health from
heat**

*American Psychological
Association 2024*



Shade Phoenix Plan Community Engagement

- Village Planning Committees
- Environmental Quality and Sustainability Commission
- Metro Phoenix Urban Forestry Roundtable
- Innovate PHX Shade Challenge
- Community workshops
- Online questionnaire with 1400+ responses



Community Questionnaire

90%

**of residents say there is not enough
built shade or trees in Phoenix**

59%

**say there is a severe
lack of trees**

39%

**say there is a severe
lack of built shade**



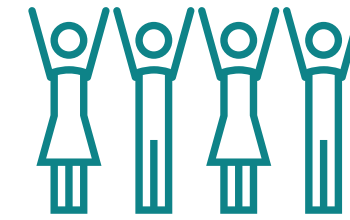
City Staff Perspectives on Shade



Varying management strategies across 12 departments



Inadequate funding to replace or add trees



Need to expand internal and external skilled workforce



High contract management needs and inconsistent performance



Unplanned costs difficult to absorb



Need for more built shade structures



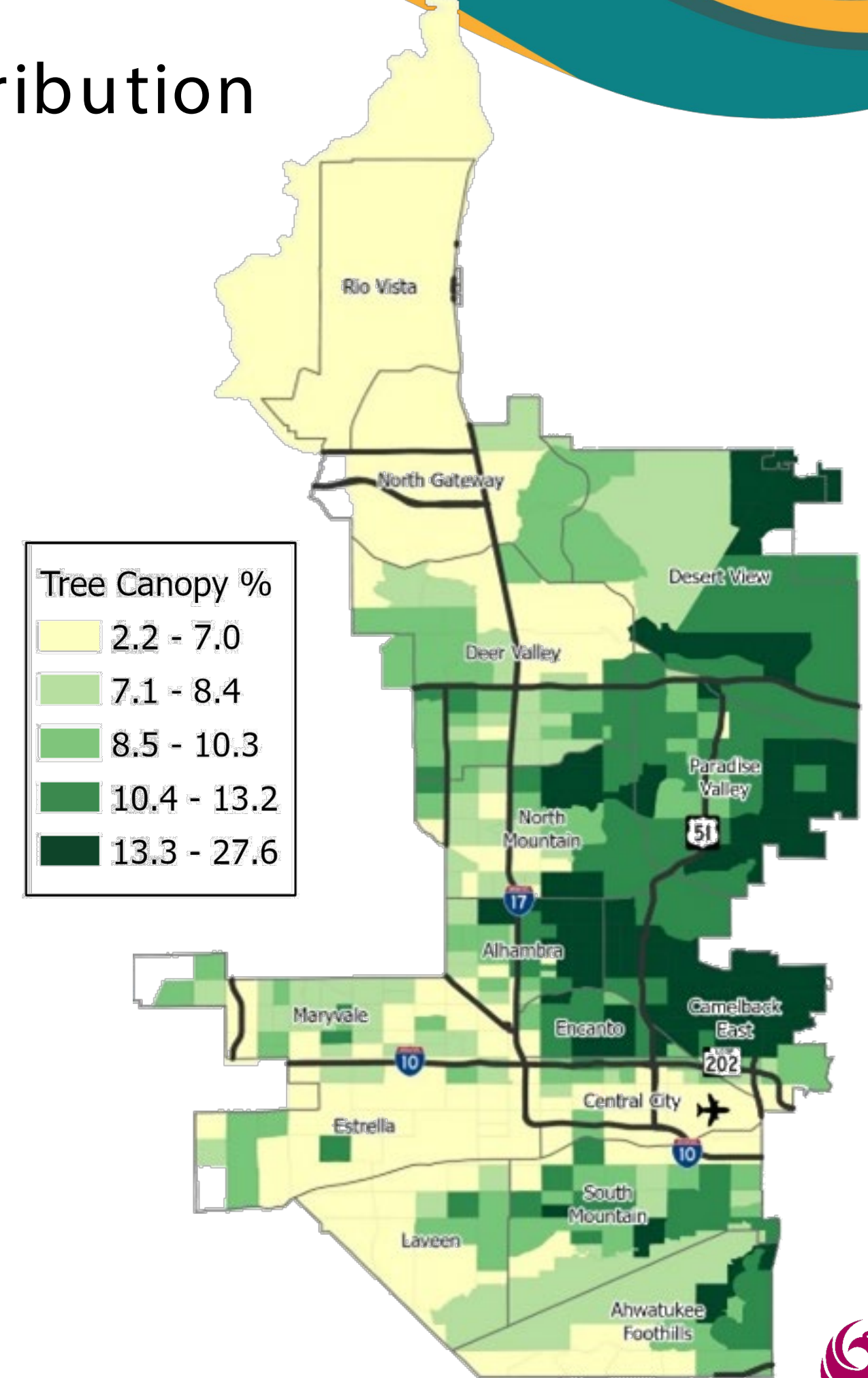
Perceived conflict between tree and water goals



Analysis – Tree Canopy Distribution

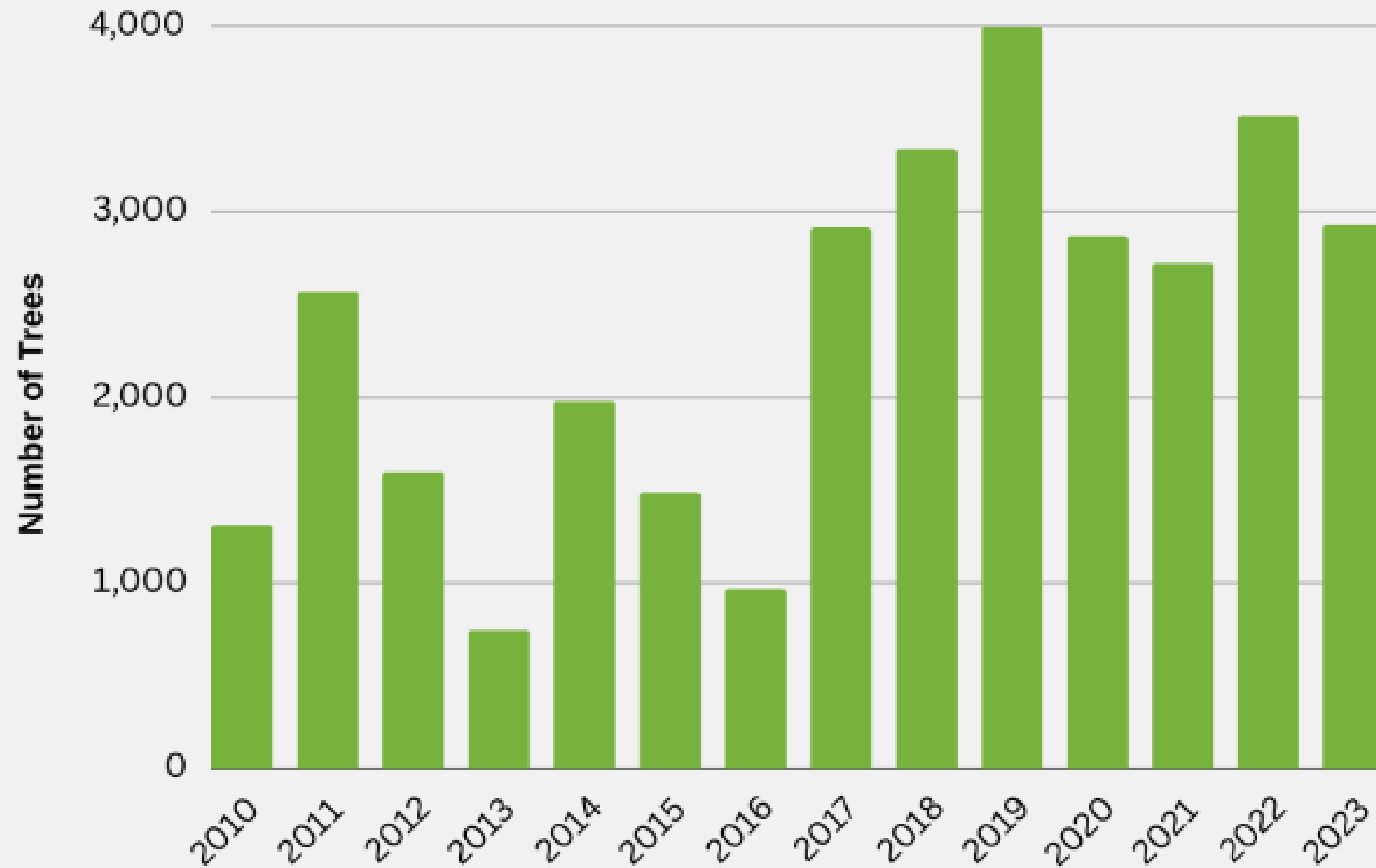
- Median tree canopy: 10.9%
- Lowest census tracts: 2–3%
(includes desert + agricultural areas)
- Highest census tracts: 25–27%

- **75% of residents live in a tract with less than 15% tree canopy**

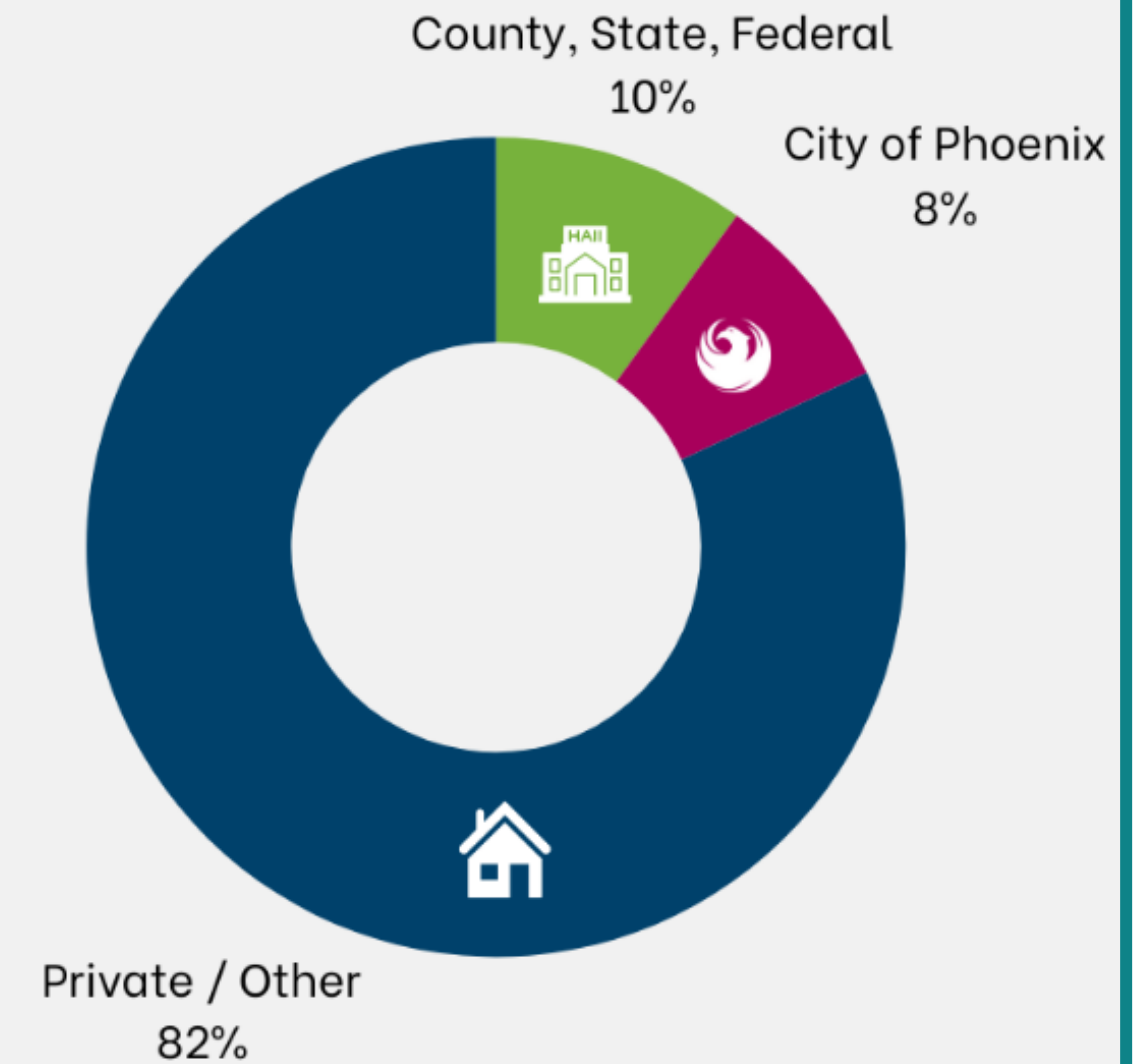


Analysis – City Tree Inventory

Number of Trees Planted



PRIVATE VS. PUBLIC PROPERTY



Analysis – Citywide Shade



Noon early summer shade



6pm early summer shade

MAG Active Transportation Plan Toolbox Guidelines

Minimum 20%

Good 30%

Excellent 60%

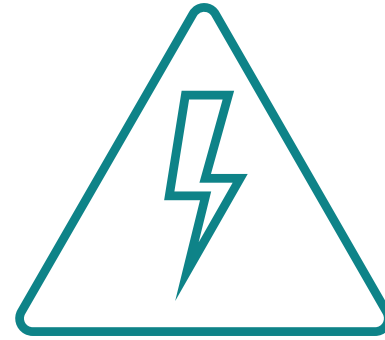


Vision and Values

A future where all residents and visitors to Phoenix experience the benefits of trees and built shade throughout the city.



Focus on people first



Shade is a critical infrastructure and a service



Lead with an environmental justice and equity lens



Respect our desert landscape and heritage



Collaboration is essential



Go beyond the status quo



Strategic Priorities and Actions

37 actions planned over the next five years
Total investment exceeding \$50,000,000

Educate &
Empower



Preserve & Maintain
Existing Shade



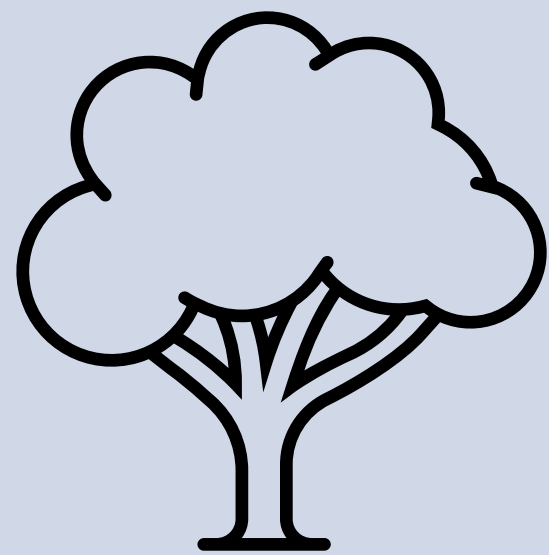
Expand Shade



Evaluate &
Institutionalize



Tree and Shade Investments



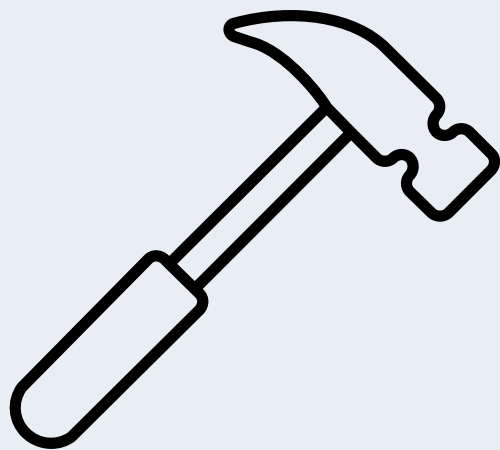
New trees

\$17M



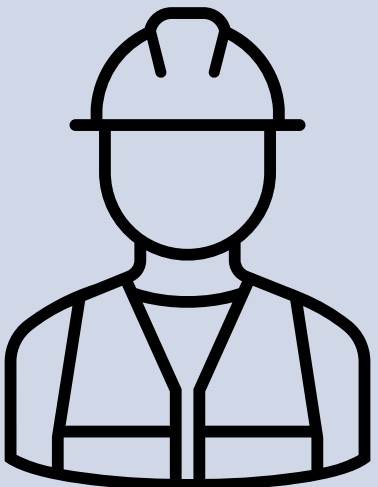
Maintenance

\$15M



New built shade

\$18M



Workforce and programming

\$2M



Funding Sources

General Fund/CIP	\$27M
------------------	-------

Grants & ARPA	\$17M
---------------	-------

GO Bond	\$8M
---------	------





Tree Planting in Parks



More than 15,000 in the past ten years

Tree Maintenance Citywide



100,000+ trees on parks and streets citywide

Certified Arborist Training



Partnership with Arizona Community Tree Council



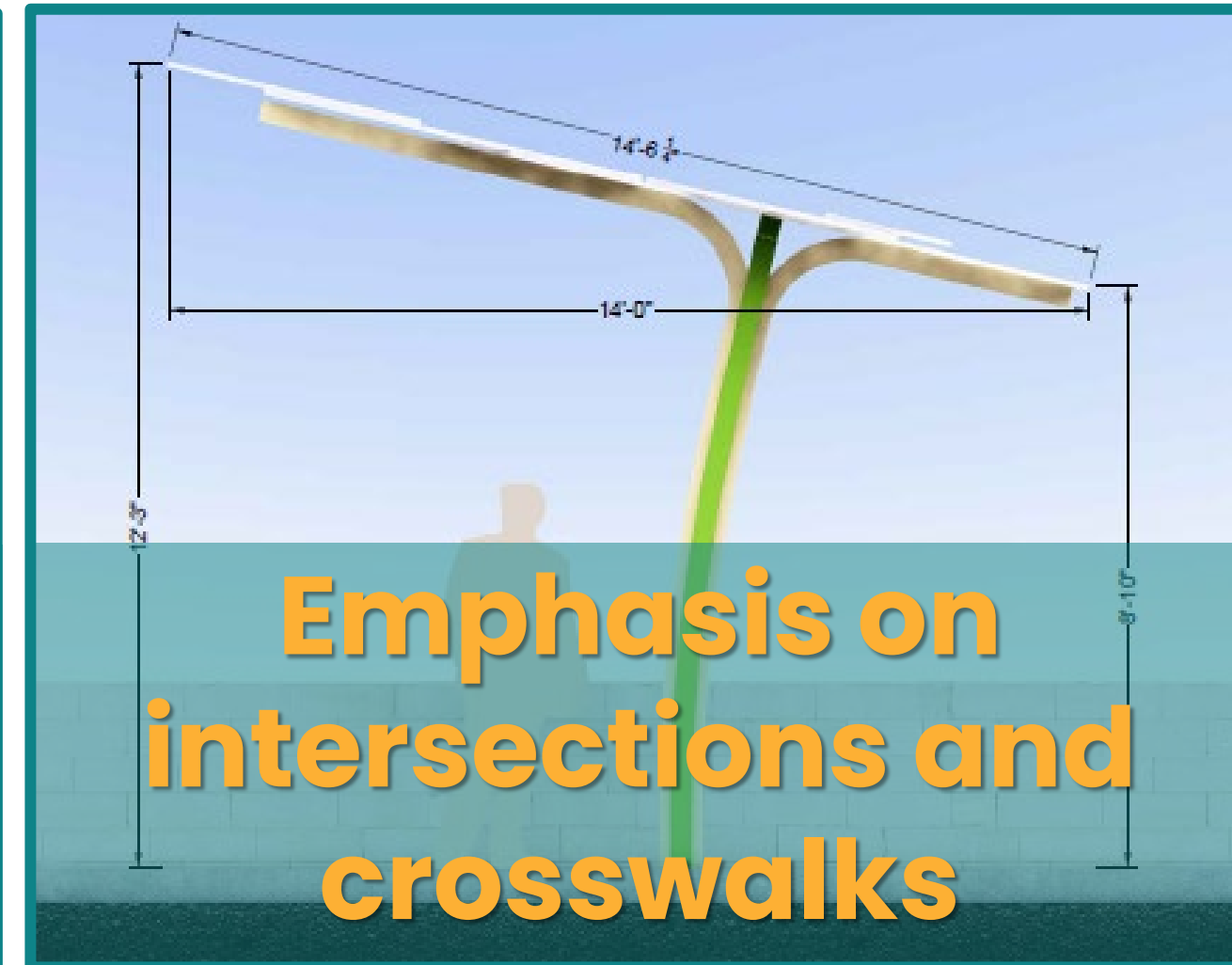
Street Transportation's Role in Shade Phoenix Plan



Landscape Maintenance Citywide

Cool Corridors & Street Tree Replacement

Shade Structure Program



Additional Actions in Shade Phoenix Plan

Bus stop shade



Public art installations



Tree and shade grants

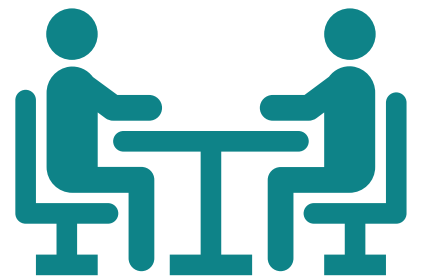


Tree Steward Program



Next steps

- Create performance indicators and timelines
- Develop site specific shade targets
- Review Budget & Research study results
- Community and stakeholder engagement
- Council feedback
- Final plan in fall 2024



- Overall, very positive/supportive
- Emphasis on ensuring proper tree maintenance plans and desire to see less siloed maintenance
- Comments on the importance of equity
- Positive comments on bringing community together and neighborhood leadership
- Appreciative of partnership with other departments
- Reiterated concerns about continuing plan regardless of specific individuals/employee turnover



OHRM Tree and Built Shade Grant Program Update

\$1.5 million

Shade Structures for Schools
Grant Program

\$2 million

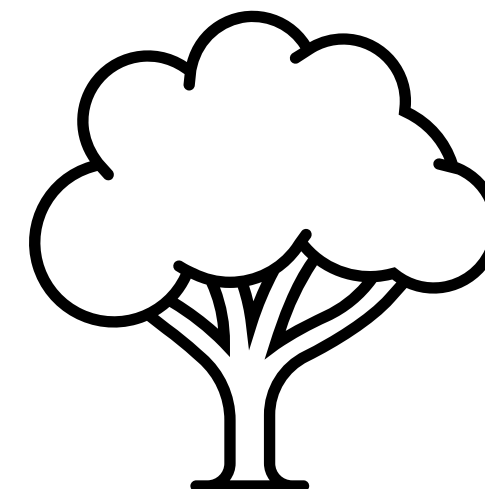
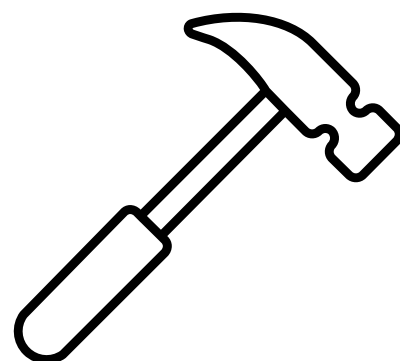
Canopy for Kids
Grant Program

\$3 million

Right of Way Shade Structures
Capital Improvement

\$2 million

Community Canopy
Grant Program



Recent Canopy for Kids Projects

- 200 trees planted
- 7 schools served
- 3,148 students impacted
- Dozens more schools to be planted in the fall
- 18 grant applications received
- 11 grant applications awarded

Program will continue with additional \$2 mil IRA Funding



Recent Community Canopy Projects

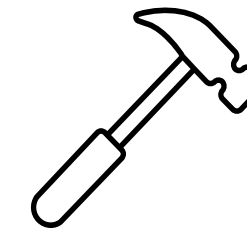
- 836 trees planted since October
 - 716 of those planted between February and May
- 436 homes served
- 2 churches served
- 158 grant applications received
- 104 grant applications awarded



Program will continue with additional \$2 mil IRA Funding



Recent Shade for Students Projects



- 23 grant applications received
- 20 grant applications awarded
- 42 shade structure projects
- 2 repairs
- Program has closed



14
Public
Schools

4 Non-
Profit
Schools

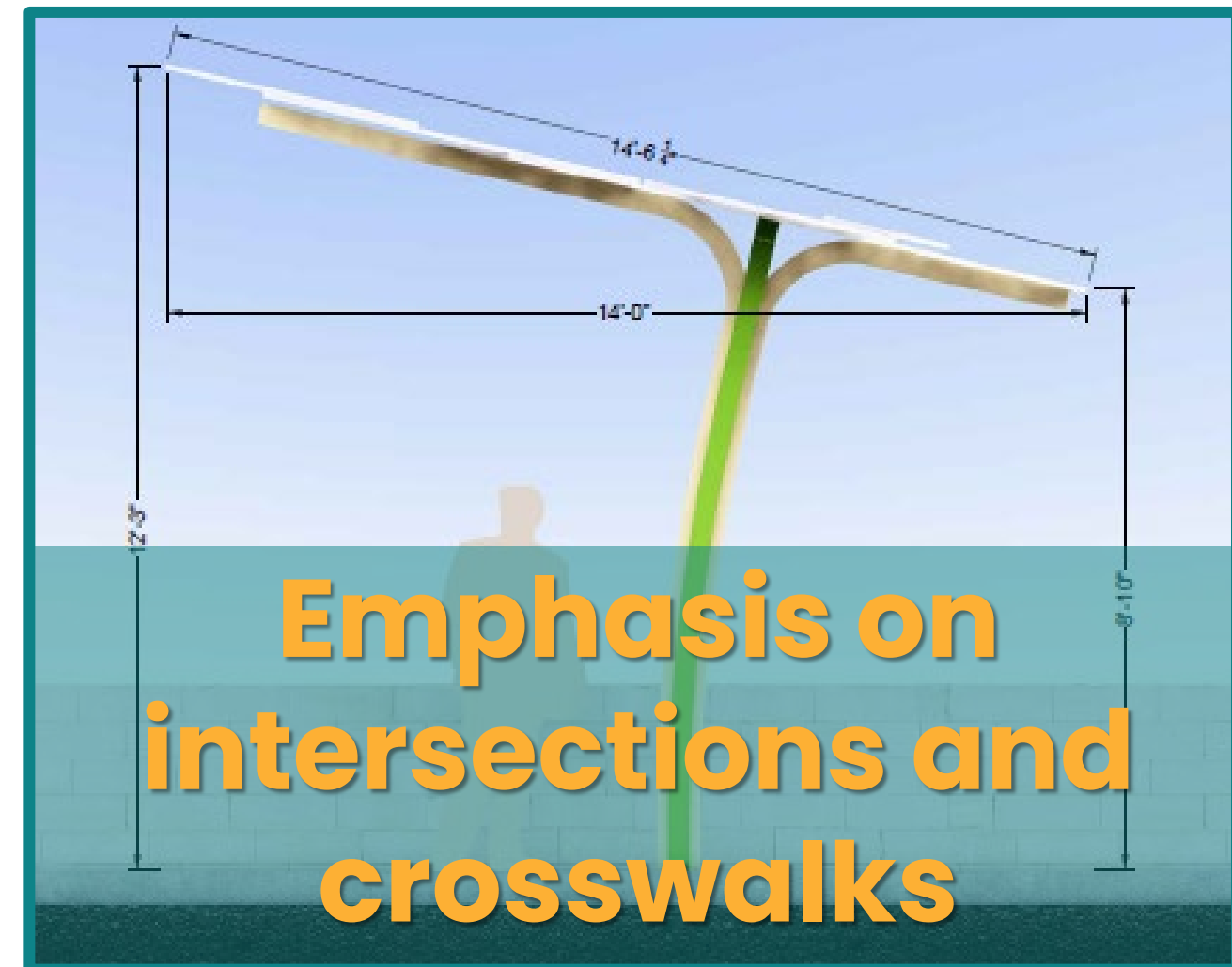
8 Non-
Profits



Phoenix Sidewalk Shade Program (ARPA)

- Design and build ~20 structures at intersections and crosswalks
- Working with 3 local artists to contribute 2D artwork to shade panels
- 100% design received, will go to bid for construction soon
- Recent public meeting archived online

Shade Structure Program





Update on Shade Phoenix Plan & Tree and Shade Grants

Office of Heat Response & Mitigation
Synergy Conference
September 7, 2024