

GET INVOLVED:

WHAT DO YOU WANT TO SEE ALONG
THE RIO SALADO STUDY AREA?

Visit:

<https://www.phoenix.gov/pdd/riophx>

Or scan the QR Code with your device

Survey



LEARN MORE:

WHAT IS HAPPENING ALONG THE RIO
SALADO STUDY AREA?

Visit:

<https://www.phoenix.gov/pdd/riophx>

Or scan the QR Code with your device

Projects & Programs



Phoenix Planning and Development Department
200 W. Washington Street, 3rd Floor
Phoenix, AZ 85003

Rev. 9/24

RIO PHX Project Summary



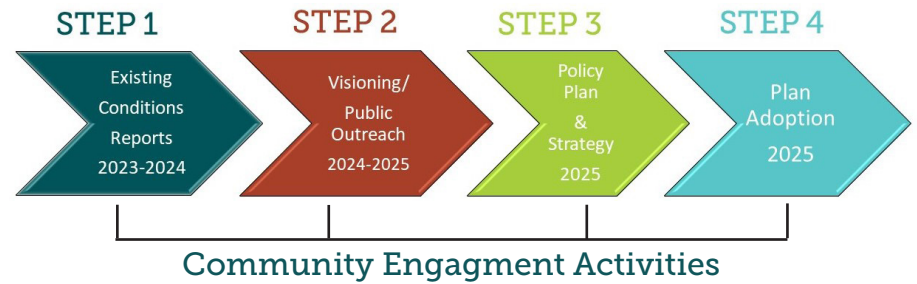
Rio Reimagined: A Regional Vision

Rio Reimagined is a regional project part of a multi-decade vision that includes six cities and two tribal communities. **RIO PHX** is Phoenix's approach to revitalize the 20-mile Rio Salado (Salt River) corridor and achieve this vision.

WHAT IS RIO PHX?

RIO PHX is a collaborative effort by the City of Phoenix and various property/business owners and community stakeholders to create a policy document that will help promote a 20-mile Rio Salado (Salt River) corridor as a local and regional destination that attracts positive investment for the benefit of existing/future businesses, residents, and tourists. This plan aims to be a key implementation component of the larger Rio Reimagined regional project.

WHAT IS THE PROJECT TIMELINE (PHASE I)?



WHY IS THIS IMPORTANT?

RIO PHX seeks to address outstanding needs in the area and create opportunities for housing, employment, recreation, art, and ecological restoration. The final aim with this project is also to improve health outcomes for existing and future residents.

Your input is important to us!



WHERE IS THIS PROJECT LOCATED?

RIO PHX has multiple project phases. The boundaries for the first phase are:

- North** - Interstate 17
- South** - Broadway Road
- East** - 32nd Street
- West** - 19th Avenue

— Freeway
— Major Street
▭ RIO PHX Boundary
▭ Rio Salado Restoration Project Limits

City of Phoenix
PLANNING & DEVELOPMENT DEPARTMENT