

# Rio Reimagined: 3rd Street Rio Salado Bicycle/Pedestrian Bridge



**Public Meeting**

July 9, 2024

# Project Team

---

**Joseph Brown** Street Transportation Director

**Rubben Lolly** Deputy Street Transportation Director

**Jarod Rogers** Deputy Parks and Recreation Director

**Carrie Brown** Phoenix Arts & Culture Deputy Director

**Tariq Momika** Project Manager

**Mojgan Vahabzadeh** Senior Public Art Project Manager

**Chris Milner** TYLin Project Manager

**Hunter Ruthrauff** TYLin Bridge Architect

**Barbara Grygutis** Independent Artist

# Welcome

**Street Transportation Director,  
Joseph Brown**



# Meeting Agenda

- Project Goals and Objectives
- Project Scope and Limits
- Background, History and Current
- Concepts Overview
- Art Integration Overview
- Project Schedule
- Next Steps - Refined Design Options



# Project Goals and Objectives



Connecting Communities



Restoring and Revitalizing Healthy Rivers



Developing Economic Sustainability

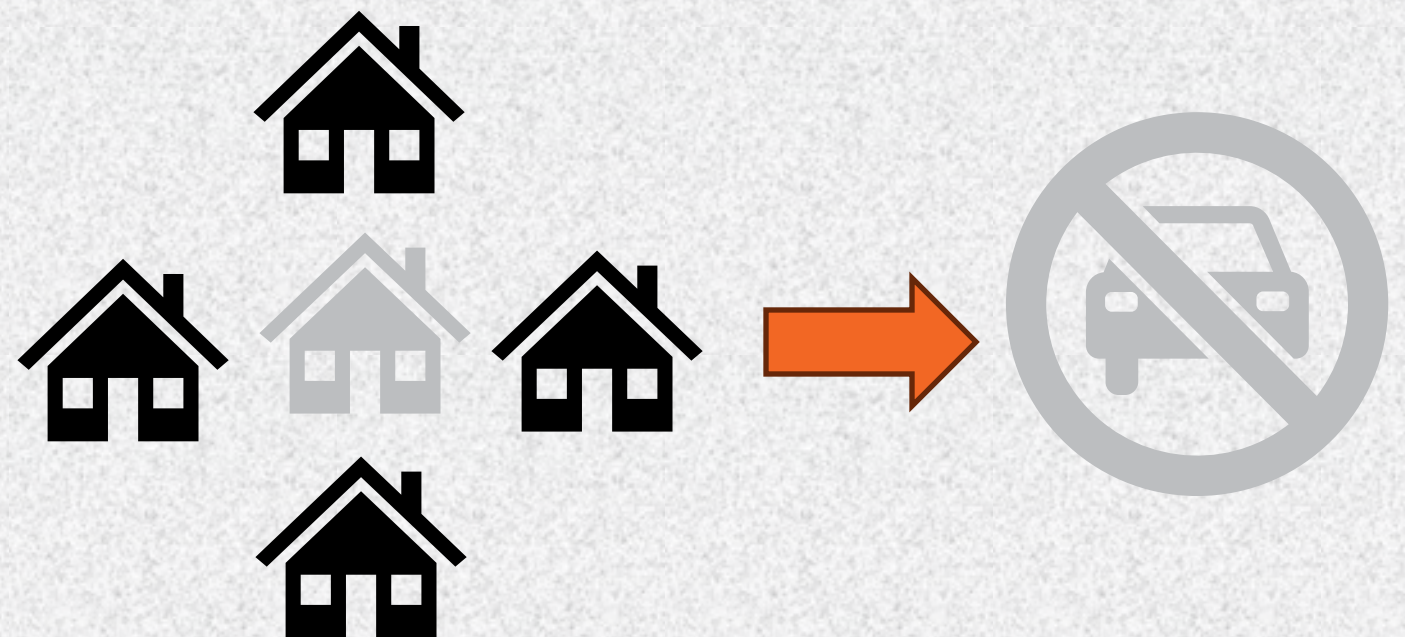
# Project Goals and Objectives

## Local Connections

### Connecting Communities



More than 1 in 5 households in the project area have no access to a personal automobile, emphasizing the need for safe, convenient, and direct active transportation infrastructure.



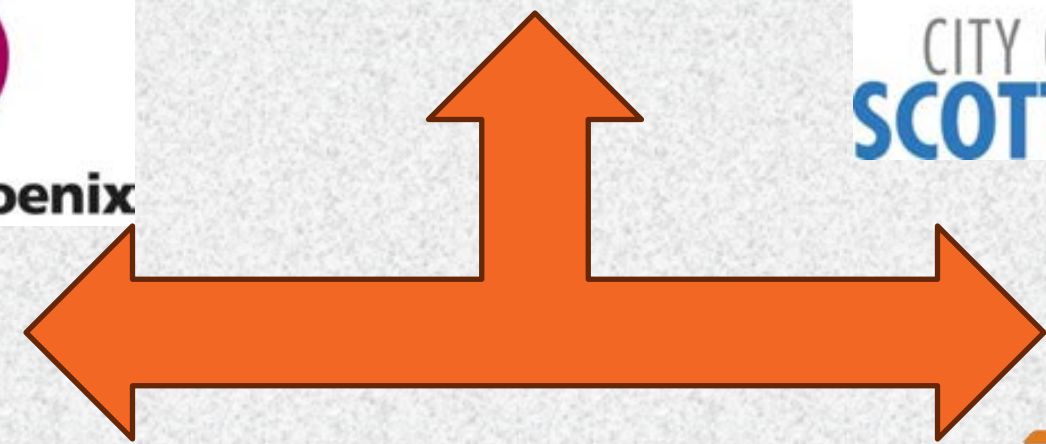
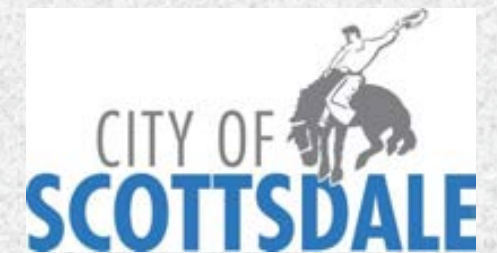
# Project Goals and Objectives

## Regional Connections

Connecting Communities



- Non-motorized link resulting in over 13 miles of low-stress pathways along the Rio Salado
- 20 miles of pathway with no at-grade vehicular crossings with Indian Bend Wash



# Project Goals and Objectives

Restoring and Revitalizing Healthy Rivers



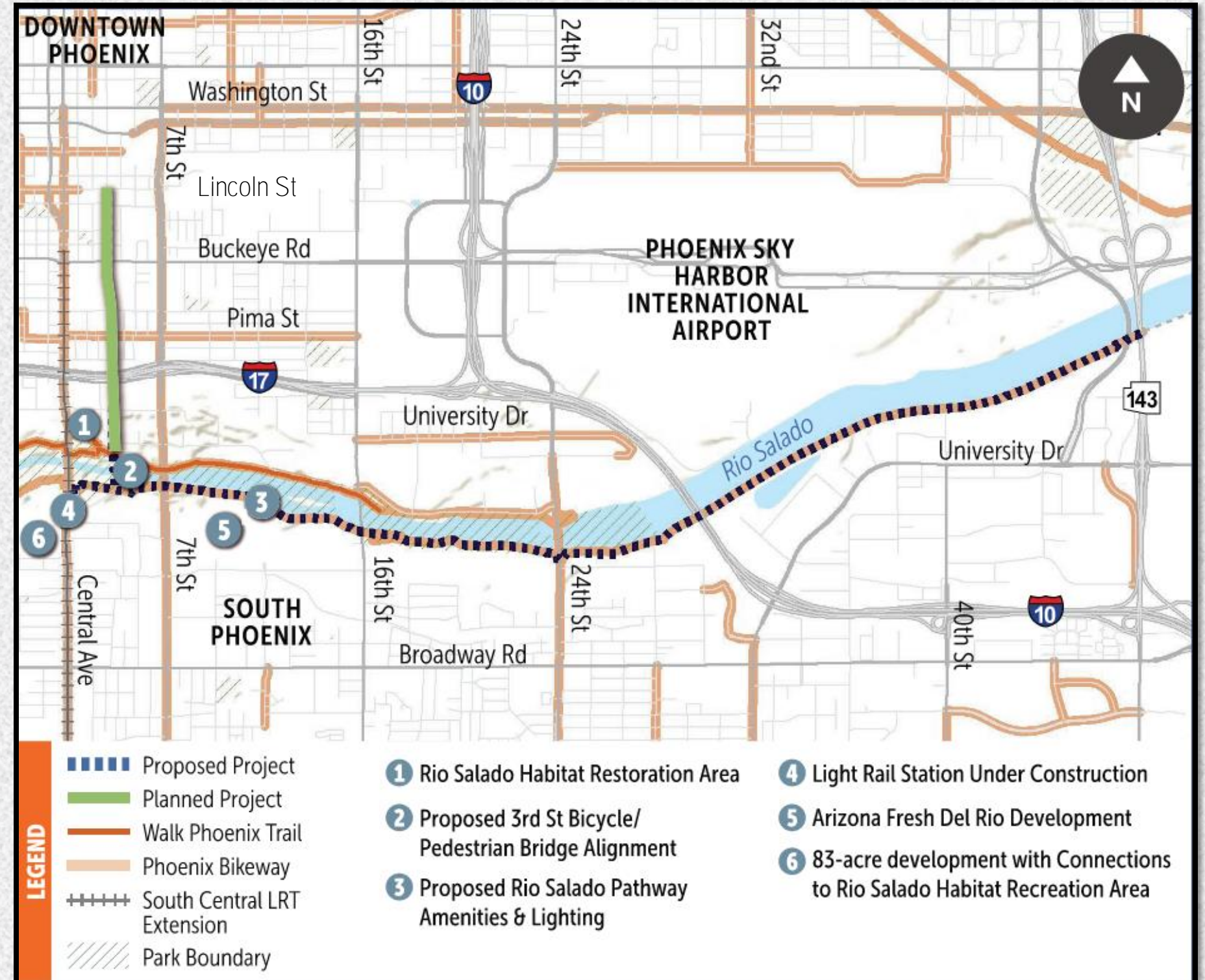
Developing Economic Sustainability





# Project Scope and Limits

- Bicycle/Pedestrian Bridge along 3<sup>rd</sup> Street alignment and Rio Salado
- South Bank Pathway Amenities and Lighting

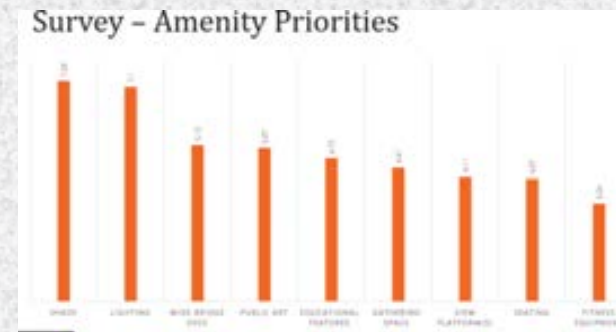


# Background

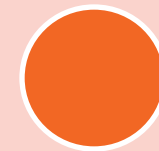
Initial Project Survey  
August 2021



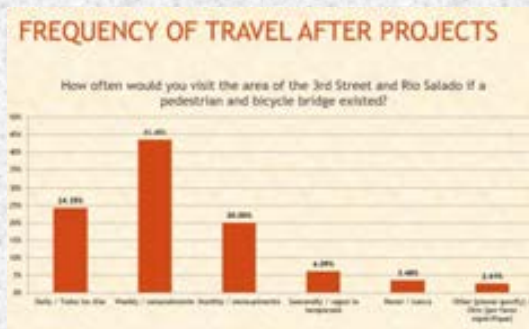
October 2021 Public Meeting



USDOT  
RAISE Grant  
Award  
August 2022



Micro Engagements by The Sagrado



Survey Following Public Meeting



# PRE-DESIGN STUDY PREFERRED ALTERNATIVE



# Current Design Phase Development

Preliminary Engineering

Identification of key stakeholders,  
related agencies, community groups

May 2024 Intensive brainstorming and  
concept exploration design charrette

Public micro-engagements activities  
with smaller stakeholder groups

July 9, 2024 - Refined design options  
Request input for preferred alternative

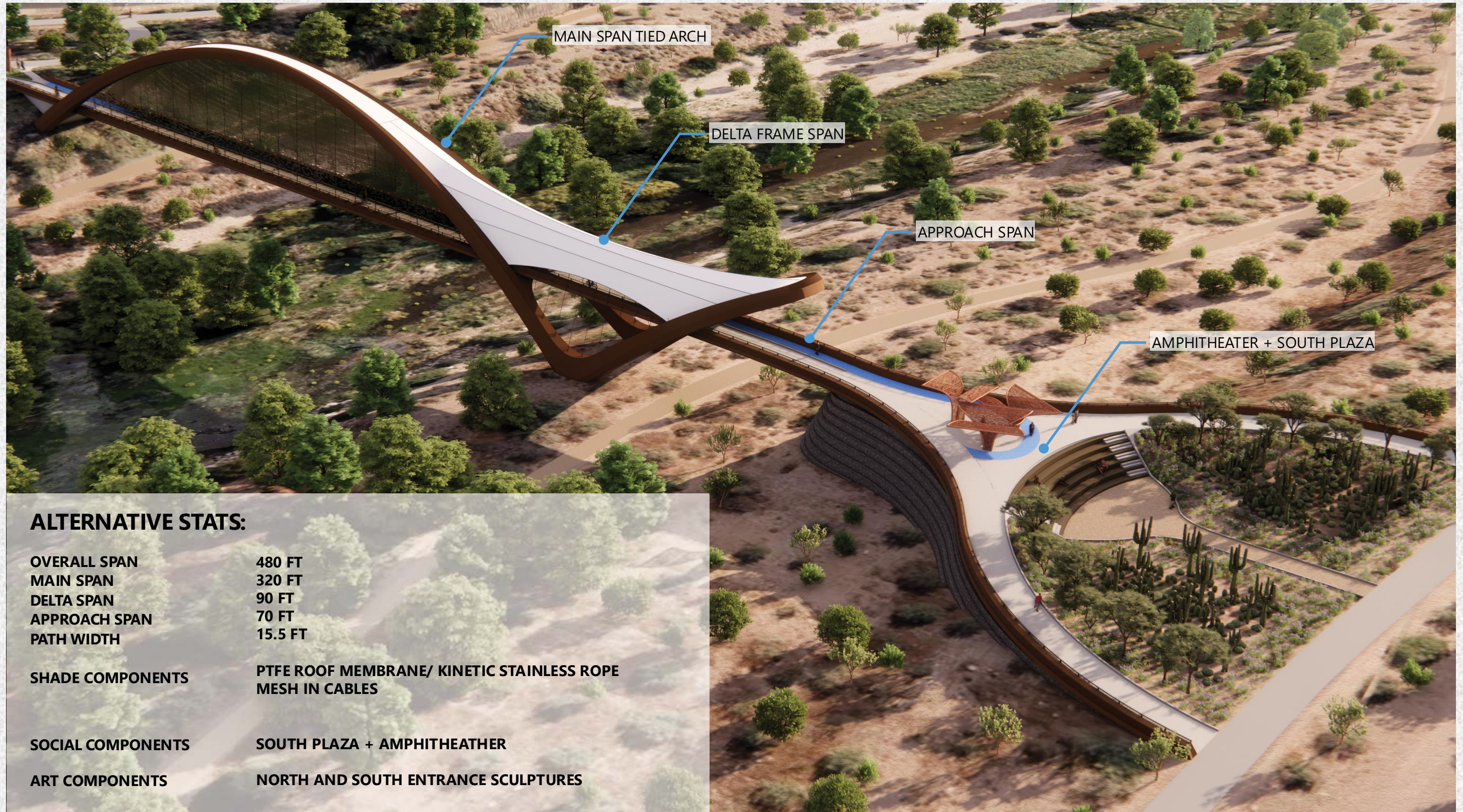


# Bridge Concepts

- Alternative 1 – Spring
- Alternative 2 – Convergence
- Alternative 3 – Union



# CONCEPTS RENDERINGS ALTERNATIVE 1 - SPRING



## ALTERNATIVE STATS:

OVERALL SPAN	480 FT
MAIN SPAN	320 FT
DELTA SPAN	90 FT
APPROACH SPAN	70 FT
PATH WIDTH	15.5 FT

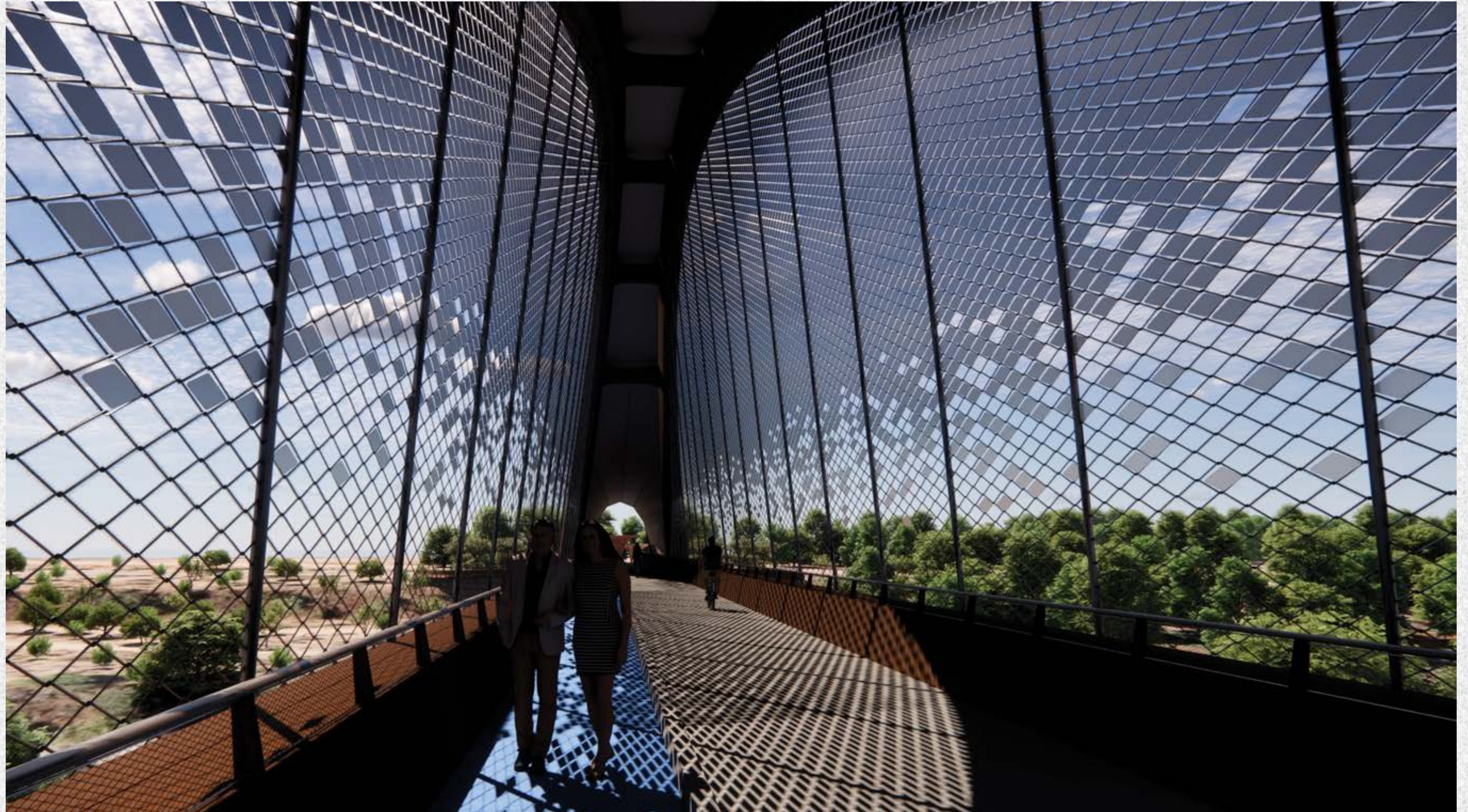
SHADE COMPONENTS      PTFE ROOF MEMBRANE/ KINETIC STAINLESS ROPE MESH IN CABLES

SOCIAL COMPONENTS      SOUTH PLAZA + AMPHITHEATER

ART COMPONENTS      NORTH AND SOUTH ENTRANCE SCULPTURES

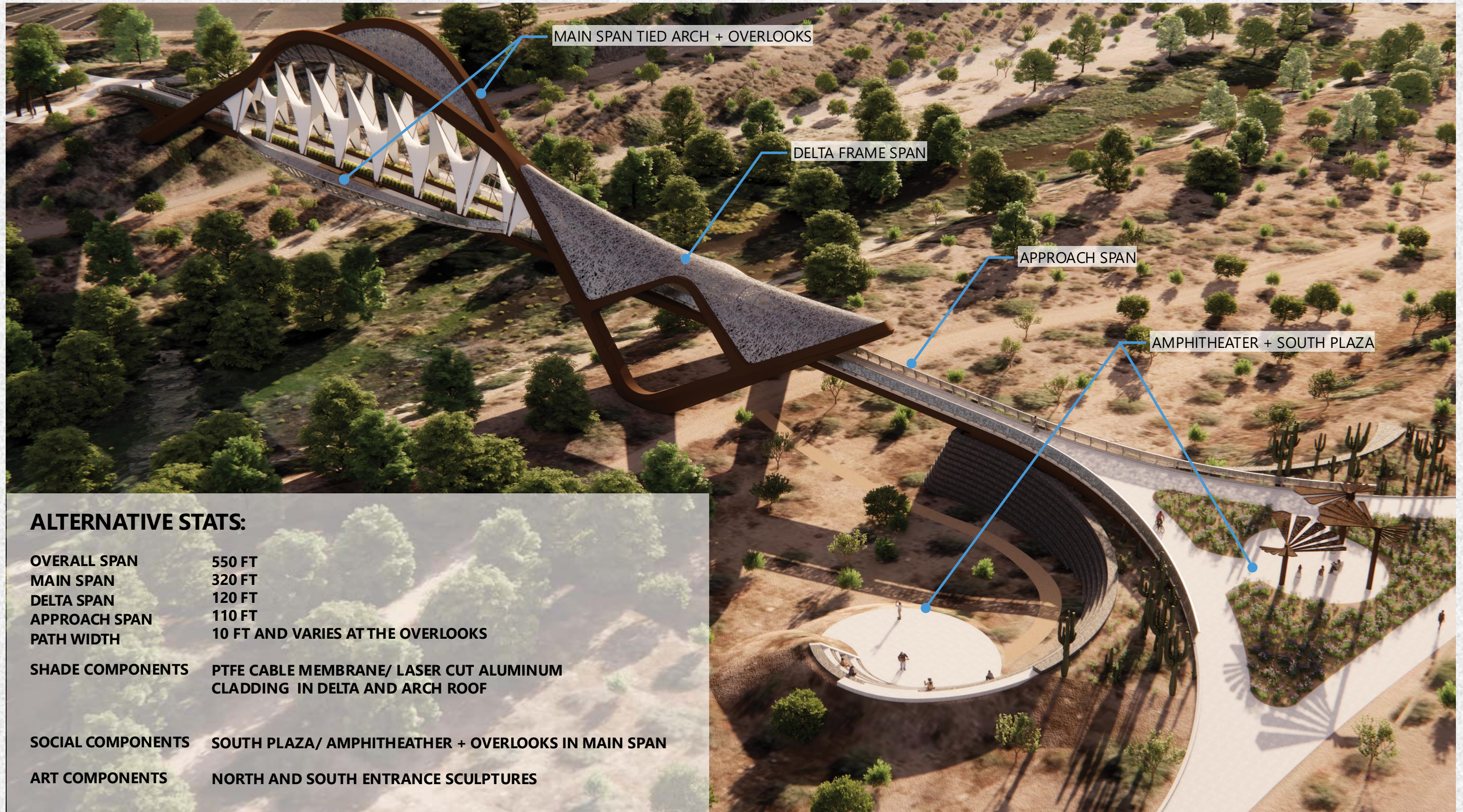
# CONCEPTS RENDERINGS ALTERNATIVE 1 - SPRING







# CONCEPTS RENDERINGS ALTERNATIVE 2 - CONVERGENCE



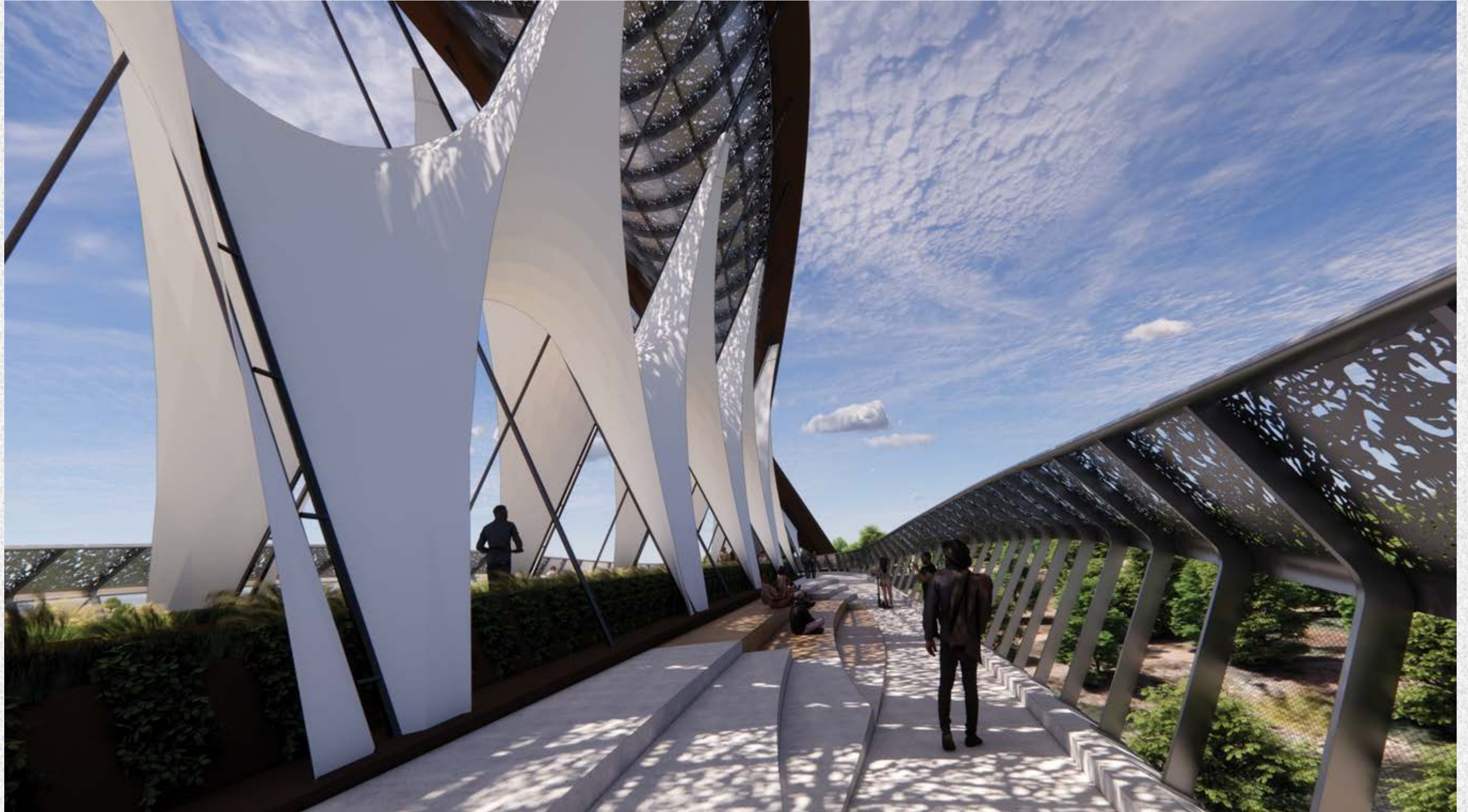
## ALTERNATIVE STATS:

OVERALL SPAN	550 FT
MAIN SPAN	320 FT
DELTA SPAN	120 FT
APPROACH SPAN	110 FT
PATH WIDTH	10 FT AND VARIES AT THE OVERLOOKS
SHADE COMPONENTS	PTFE CABLE MEMBRANE/ LASER CUT ALUMINUM CLADDING IN DELTA AND ARCH ROOF
SOCIAL COMPONENTS	SOUTH PLAZA/ AMPHITHEATER + OVERLOOKS IN MAIN SPAN
ART COMPONENTS	NORTH AND SOUTH ENTRANCE SCULPTURES

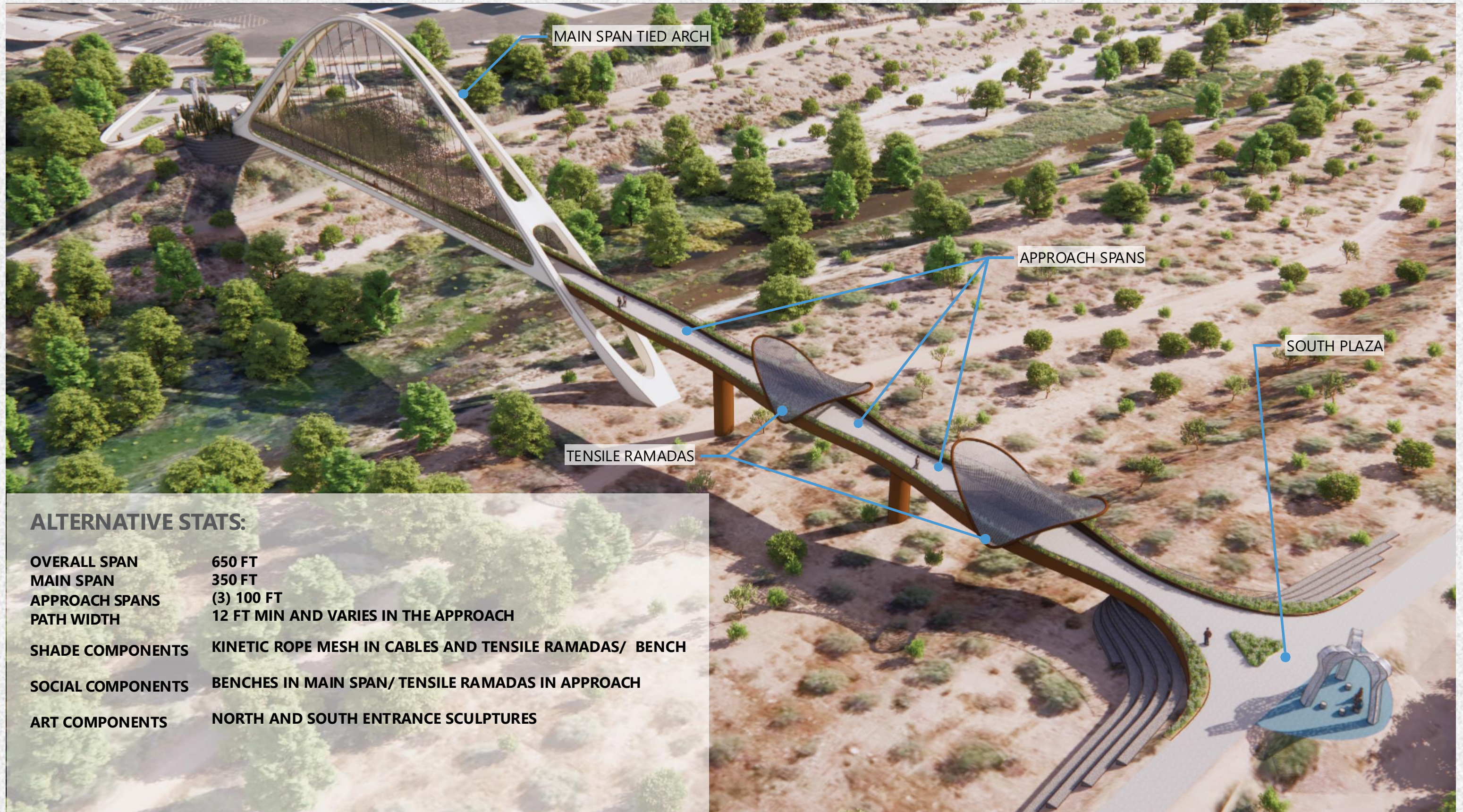
# CONCEPTS RENDERINGS ALTERNATIVE 2 - CONVERGENCE







# CONCEPTS RENDERINGS ALTERNATIVE 3 - UNION



MAIN SPAN TIED ARCH

APPROACH SPANS

SOUTH PLAZA

TENSILE RAMADAS

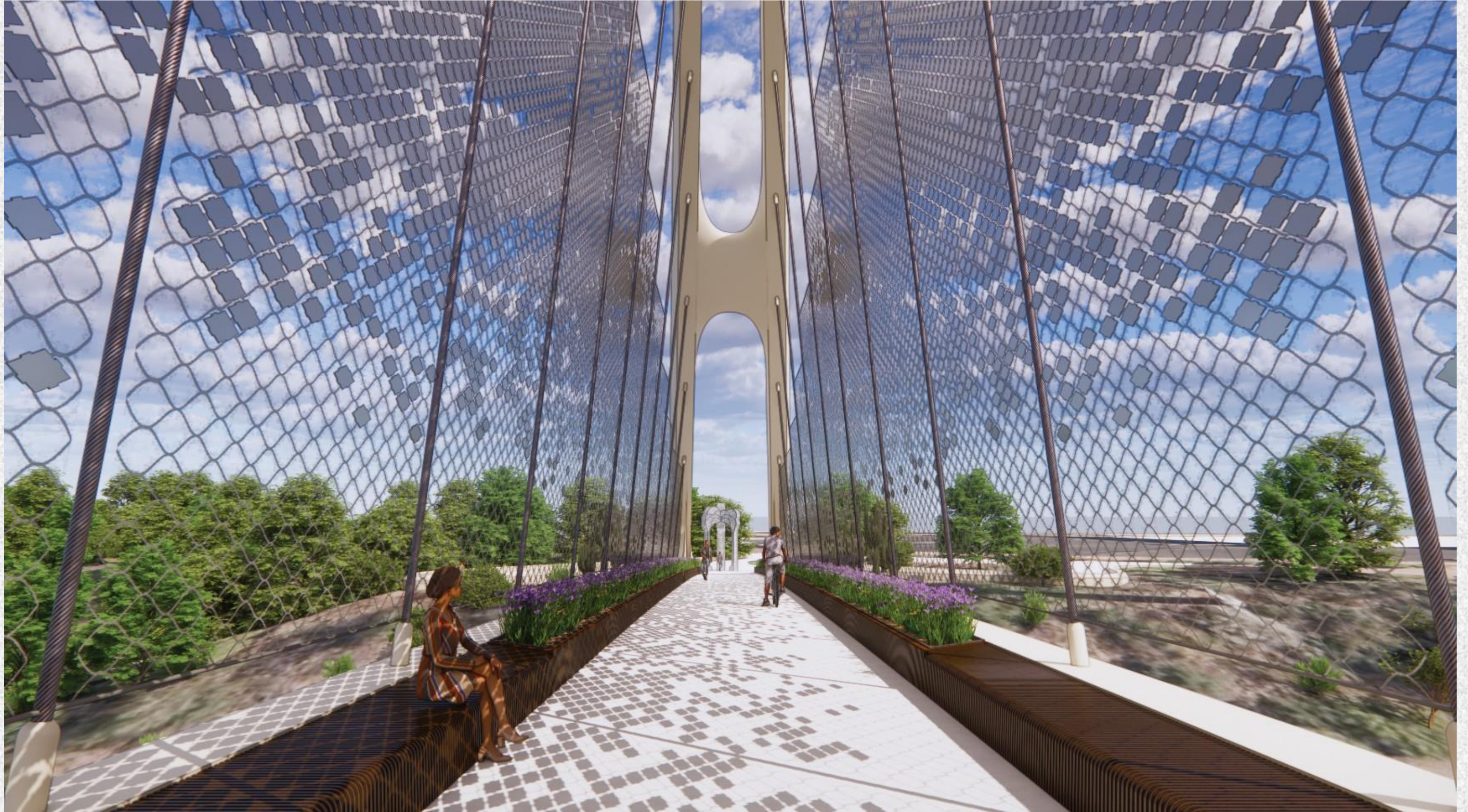
## ALTERNATIVE STATS:

OVERALL SPAN	650 FT
MAIN SPAN	350 FT
APPROACH SPANS	(3) 100 FT
PATH WIDTH	12 FT MIN AND VARIES IN THE APPROACH
SHADE COMPONENTS	KINETIC ROPE MESH IN CABLES AND TENSILE RAMADAS/ BENCH
SOCIAL COMPONENTS	BENCHES IN MAIN SPAN/ TENSILE RAMADAS IN APPROACH
ART COMPONENTS	NORTH AND SOUTH ENTRANCE SCULPTURES

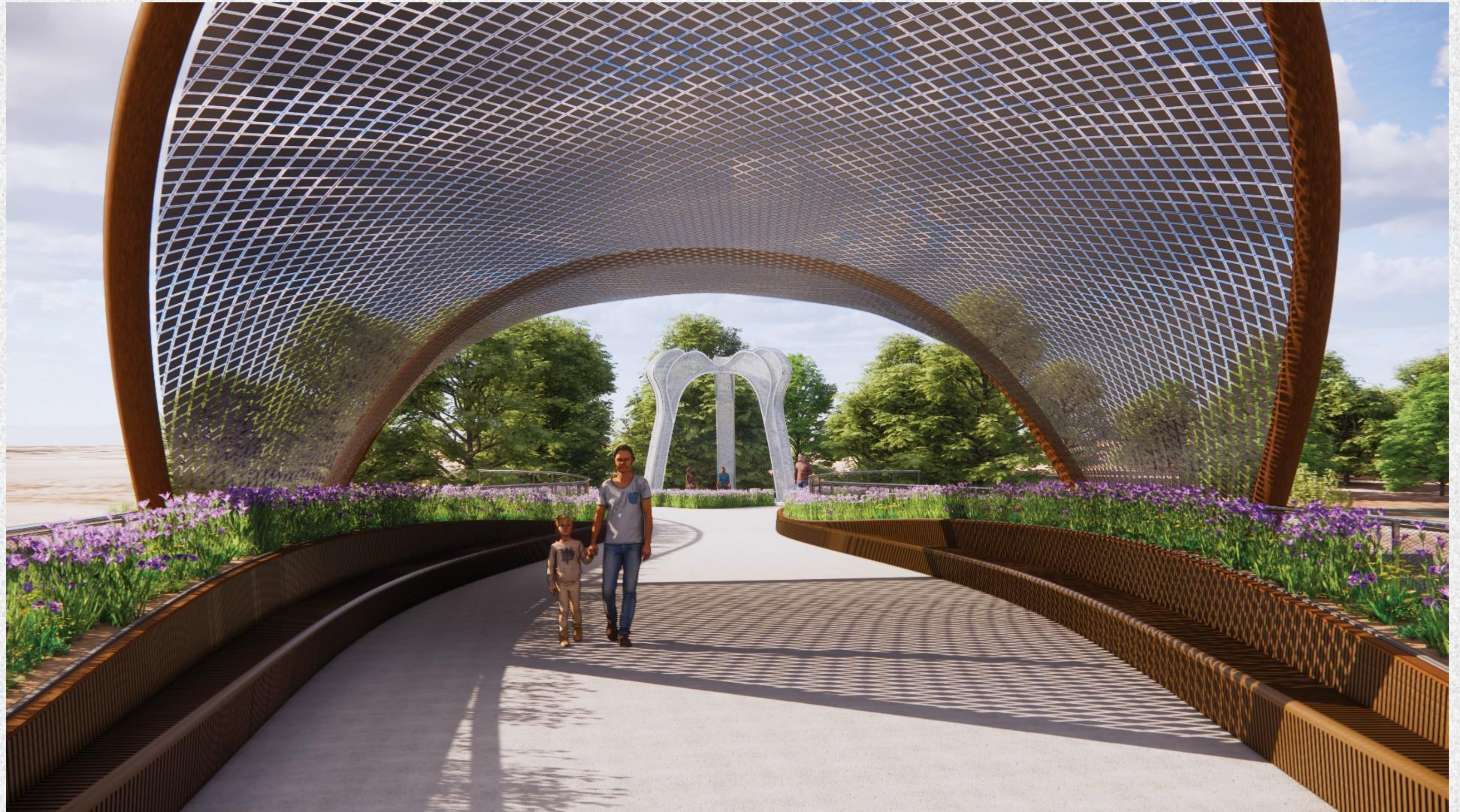
# CONCEPTS RENDERINGS ALTERNATIVE 3 - UNION



# CONCEPTS RENDERINGS ALTERNATIVE 3 - UNION



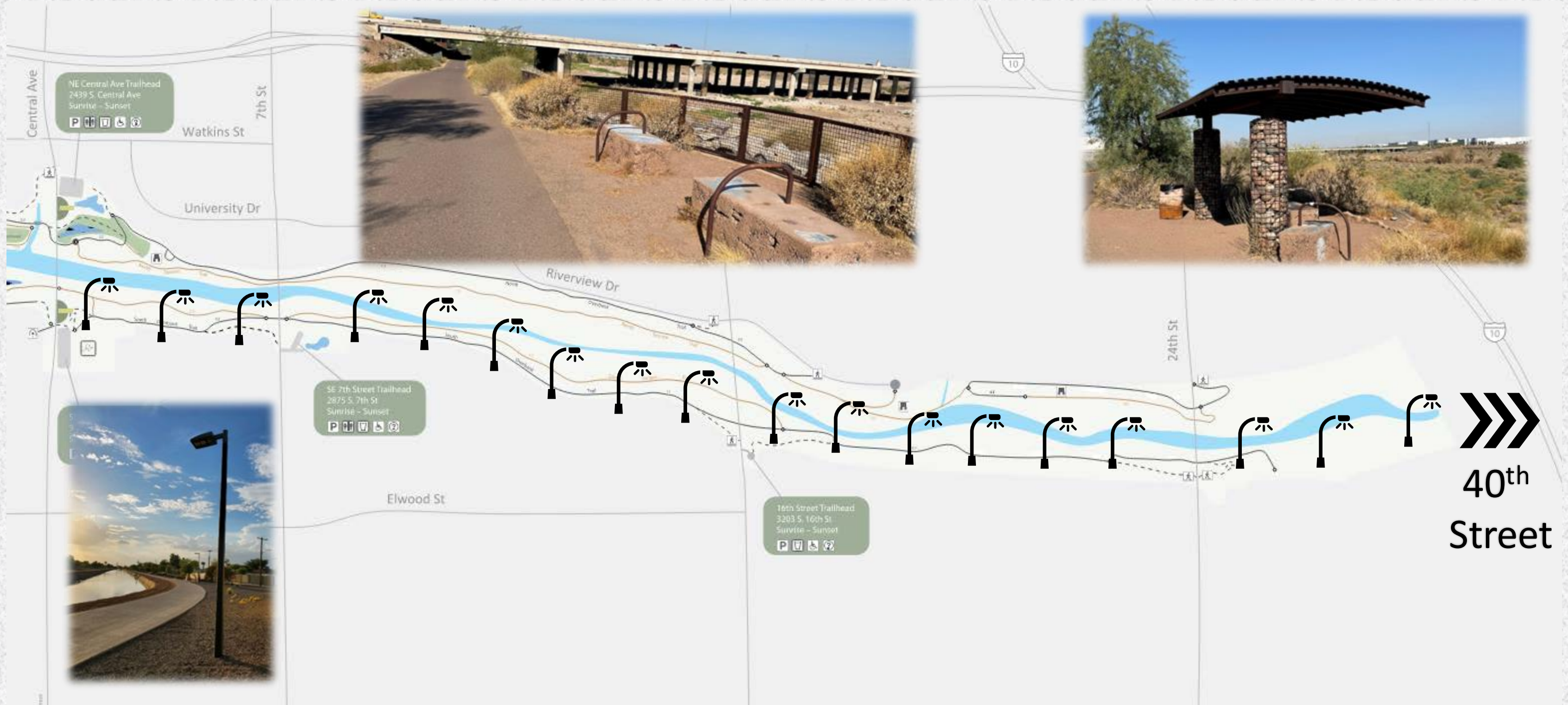
# CONCEPTS RENDERINGS ALTERNATIVE 3 - UNION





# SOUTH BANK AMENITIES

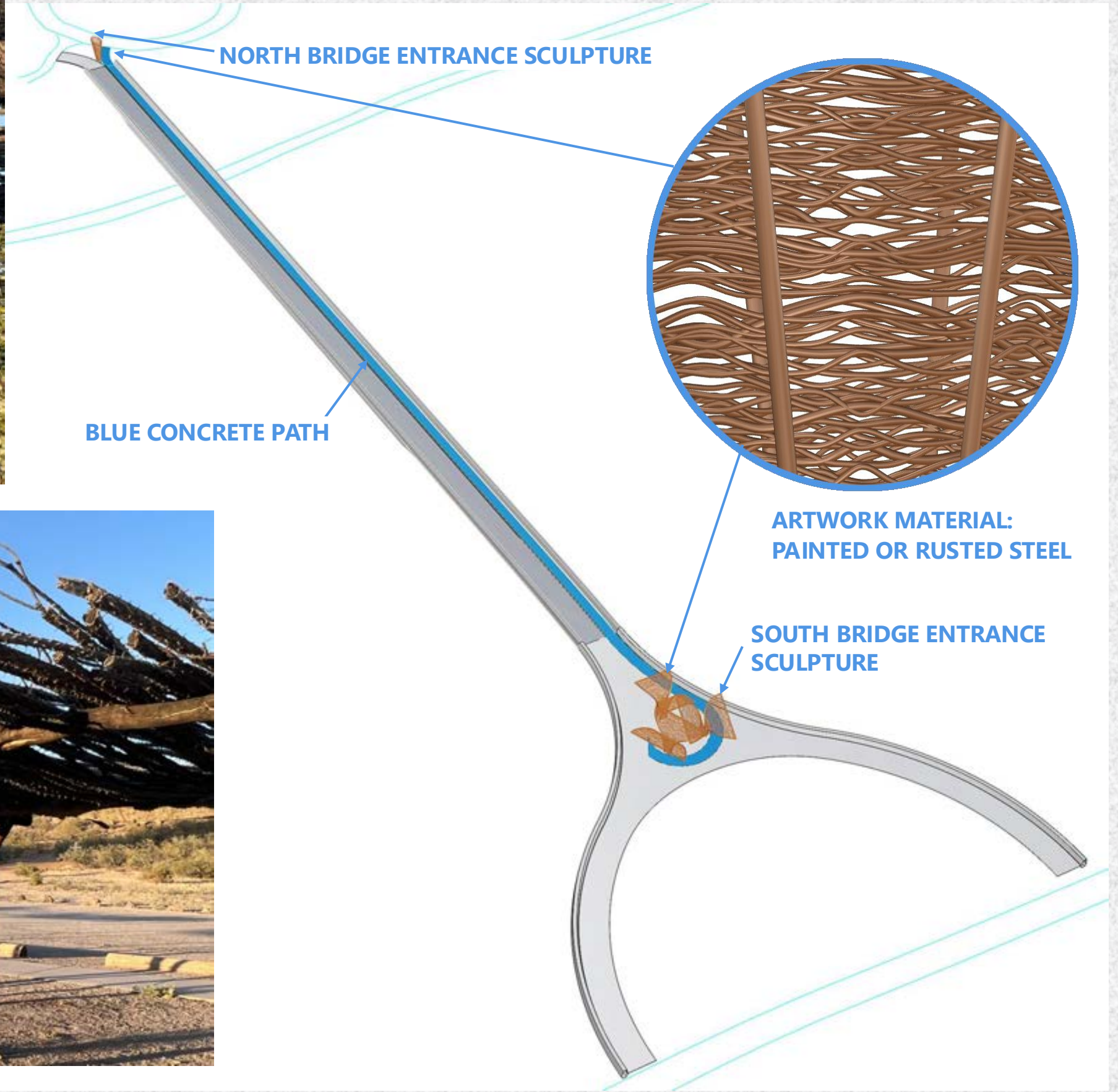
## Lighting, Seating, and Ramadas



# Art Integration and Inspiration

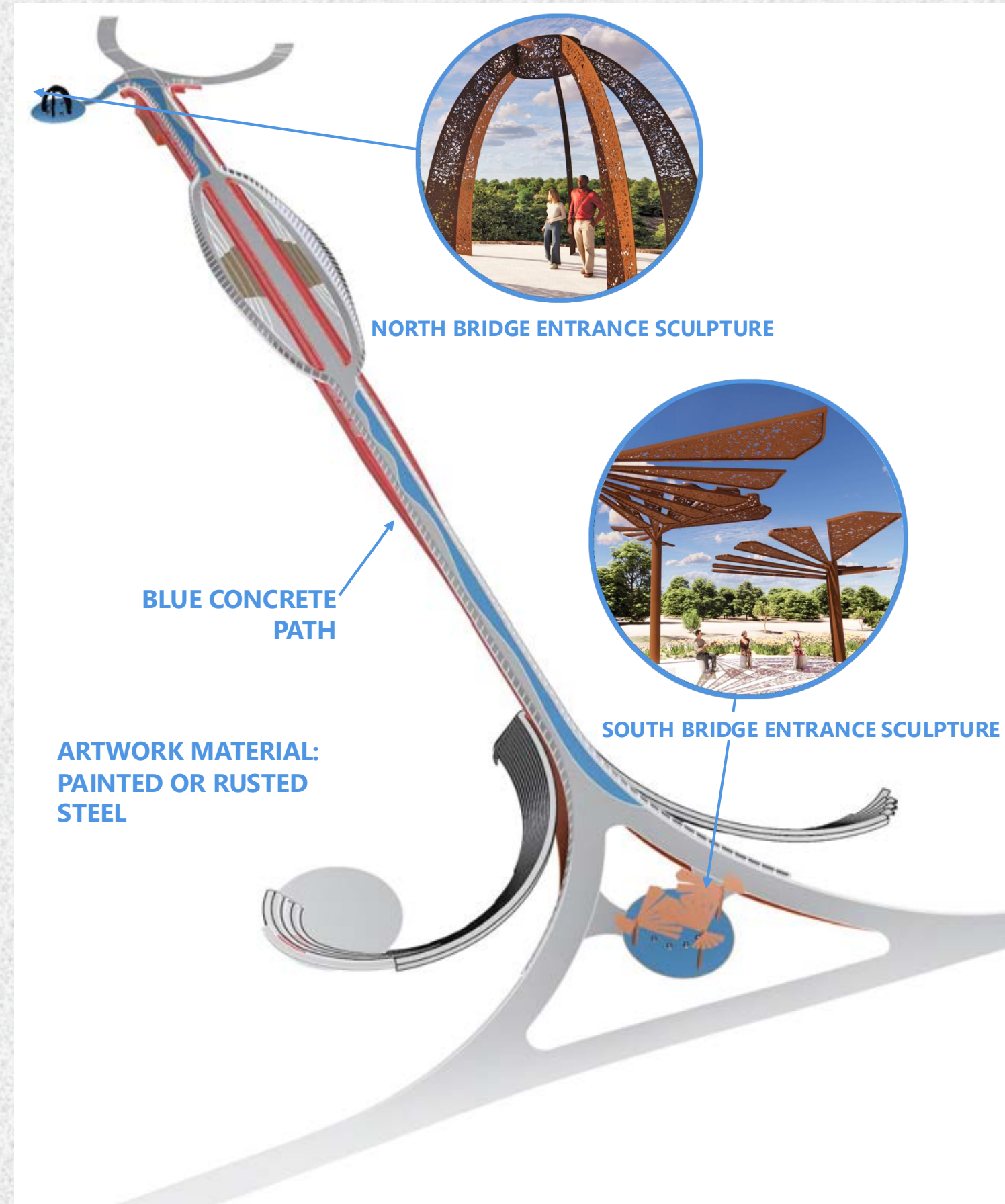
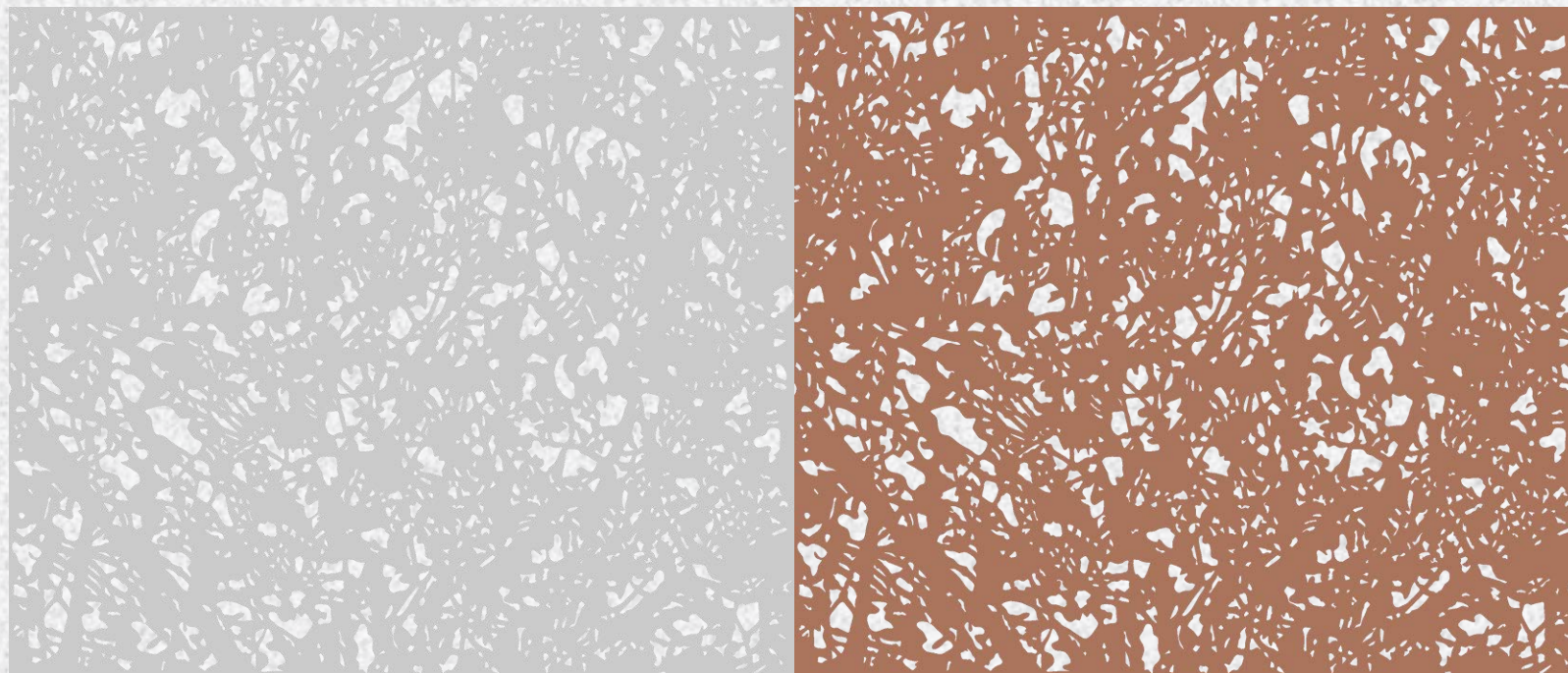
- Concept 1 – WOVEN DESERT
- Concept 2 – SHADOW PATTERN
- Concept 3 – CLOUD PAVILION







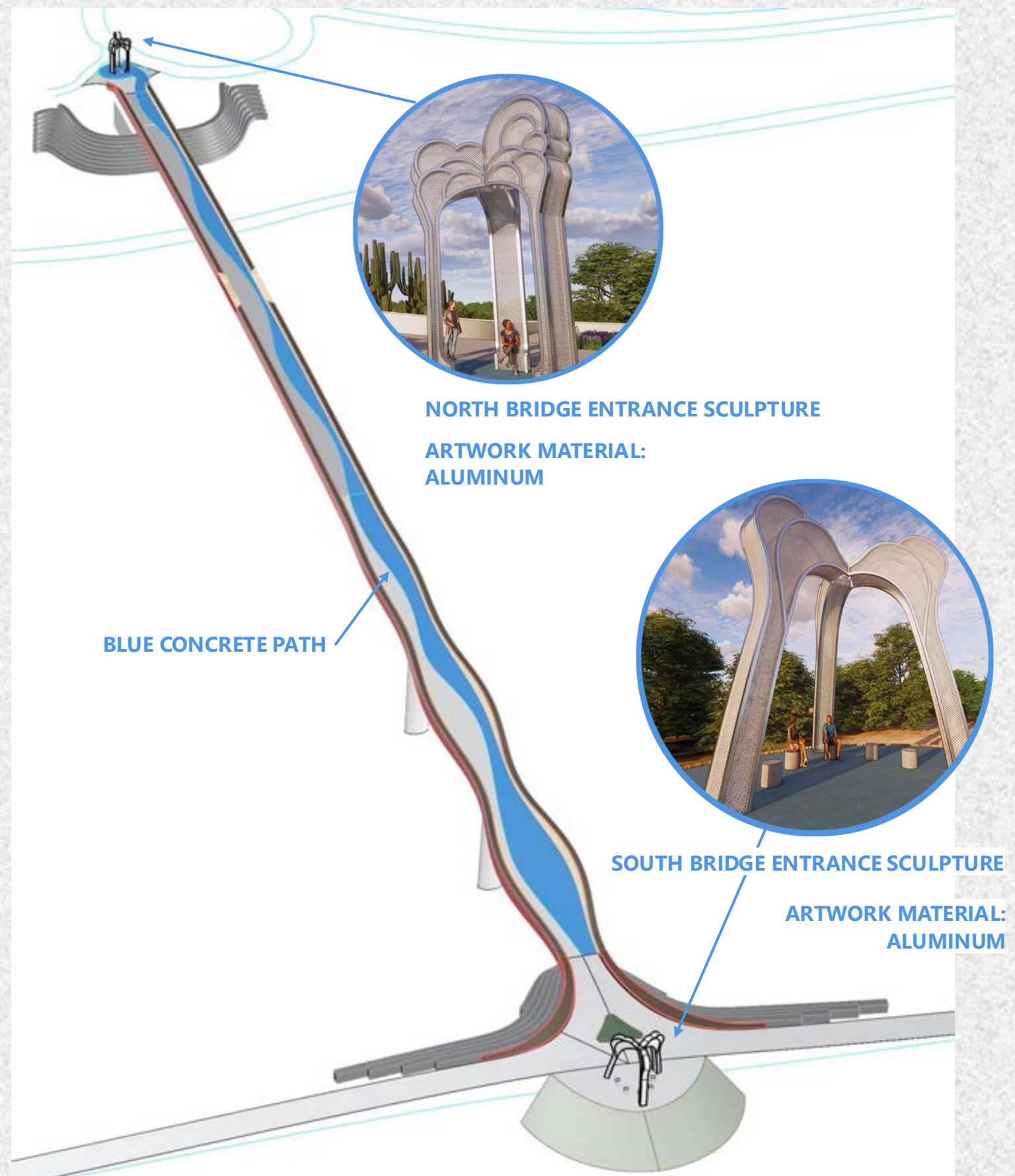












**NORTH BRIDGE ENTRANCE SCULPTURE**

**ARTWORK MATERIAL:  
ALUMINUM**

**BLUE CONCRETE PATH**

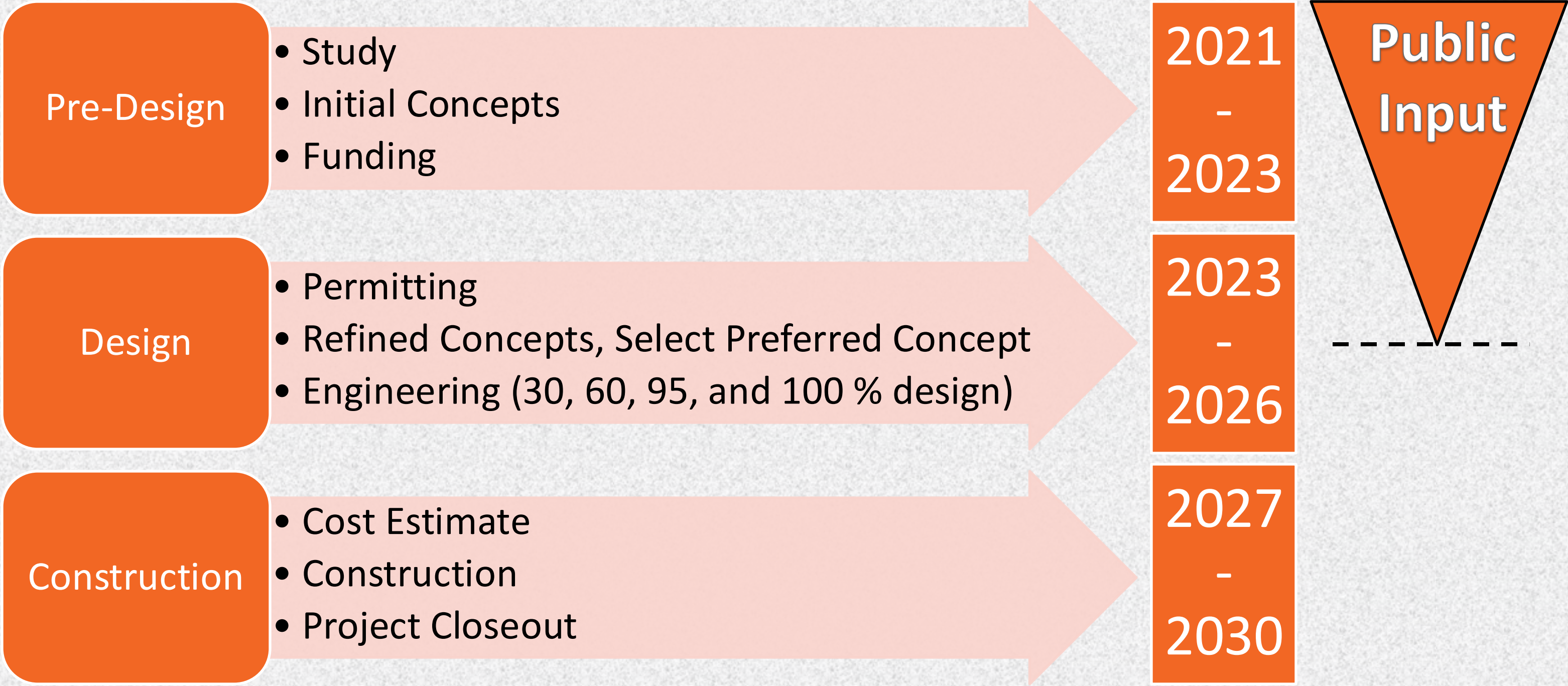
**SOUTH BRIDGE ENTRANCE SCULPTURE**

**ARTWORK MATERIAL:  
ALUMINUM**





# Project Schedule



# Next Steps – Refined Design Options

- Please fill out our survey! Complete by 7/28/2024
- City encourages all neighbors and residents to visit the following website for regular project updates  
[phoenix.gov/streets/RioSaladoBridge](https://phoenix.gov/streets/RioSaladoBridge)
- Project Hotline 623-825-3444

